



# 2022 Donor Impact Report

## Generosity Heals

Your generosity impacts lives.  
Makes a difference. Heals.



# Your Gifts in Action

Each and every investment in St. Luke's Wood River Foundation enhances the health of the community you know and love. Your generosity makes a true and measurable difference in the lives of others.

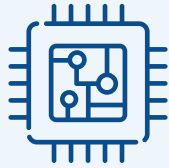
**\$2.35 million**

Committed to build new homes for health care workers.



**\$1 million**

Invested in the new Family Health Services clinic in Bellevue, which provides access to comprehensive health care services to every member of our community.



**Nearly \$300,000**

Invested in state-of-the-art technology to enhance care for St. Luke's Wood River patients.

**146**

Patients assisted with health-related necessities.



**\$10,000+**

In counseling scholarships awarded to support mental well-being.



**24**

Scholarships awarded to educate clinical staff and students pursuing health care careers.

**\$50,000+**

In grants to help St. Luke's Wood River employees in need of financial assistance.



**10**

Community health grants to empower health for all.

**600+**

Ski days for St. Luke's Wood River employees on Bald Mountain, thanks to the passes provided through generosity.

*Data as of Sept. 30, 2022.*

**On cover:** St. Luke's Wood River Emergency Department physicians Brock Bemis, MD, and Autumn Loomis, MD.



# St. Luke's Wood River Foundation

## BOARD OF DIRECTORS

### Officers

- Pete Smith, President
- Delvin Ash, Vice President
- Bob Robideaux, Treasurer
- Matt Kopplin, MD, Secretary

### Directors

- McNair Bailey
- Barbara Boswell
- Megan Edwards
- Jeff Foushee
- Betsy Gates
- Roger Gould
- Becky Lopez
- John Monson
- Cynthia Murphy
- Bob Reniers
- Deb Robertson, MD
- Megan Tanous, Chief Development Officer
- Eric Thomas, St. Luke's Wood River Board of Directors
- Jon Thorson, MD
- E. Carlton "Buddy" Wilton

### Emeritus Council

- Judy Atkinson
- Lynn Campion-Waddell
- Nancy Cord
- Michael Engl
- Sheila Fryberger
- Wayne Griffin
- Geri Herbert
- Ben Holmes
- Wilson McElhinny
- Bud Purdy\*
- Martha Reed\*
- Shirley Renick\*
- Gordon Russell
- Will Storey\*

*\*In memoriam*

## Dear Friends,

Thank you for making a difference in the lives of others. We are truly grateful for the generosity of individuals, families and organizations for investing in the health and well-being of our community. Your gifts are at the heart of everything we do.

This past year, you gave the gift of hope and healing. You made it possible to navigate an extremely difficult time in health care and courageously invest in the future. In the pages that follow, we invite you to read about the difference you made.

Through your generosity, construction began on 12 new homes for St. Luke's Wood River health care workers. Construction on the first four homes is complete, and an additional eight homes are slated for completion this fall. These new homes will help ensure the hospital has highly trained staff to care for you, your family and neighbors for years to come.

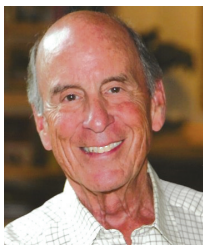
To further increase access to care, the Foundation invested \$1 million to help bring Family Health Services, a federally qualified health center and nonprofit, to the Wood River Valley. The new clinic provides medical and dental care as well as pharmacy services to those without insurance or who are under-insured.

These visionary investments will impact lives for years to come and are only possible through your partnership.

You also made it possible to bring the latest technology to patients and families, supported patients in need, offered educational opportunities to staff and advanced the work of community health partners.

As we reflect on this past year, we thank you for your partnership and look forward to working with you in the years to come.

With gratitude,



**Pete Smith**  
St. Luke's Wood River Foundation  
President, Board of Directors



**Megan Tanous**  
St. Luke's Wood River Foundation  
Chief Development Officer

# Stronger Together

Your generosity has enabled us to provide critical support to St. Luke's Wood River staff as they ensure clinical excellence and empower health for all.

“Thanks to your generosity, I became a certified emergency nurse. This specialty emergency nursing designation makes it possible to provide the safest care to our community. St. Luke's Wood River Foundation has supported my nursing education throughout my career—and for that I am grateful.”

Lauren Hoover, BSN, RN, CEN, TCRN



“The ski passes make it possible for me to get out and enjoy the mountain. Providing ski passes ... is an incredible gift for the health care staff.”

Justin Houck, RN

“Generosity helps us provide the highest quality care—for that, I am grateful.”

David McClusky, III, MD, general surgeon  
and past chief of staff



“The Foundation is relentless on meeting the needs of the hospital and supporting the staff. Generosity is greatly appreciated by our team, everything from purchasing state-of-the-art equipment to providing employee appreciation lunches and ski passes.”

Ryan Schmidt, MRI technologist



“I remain endlessly grateful for our telehealth capabilities available in every hospital room. We continue to utilize this technology more and more and it enhances our ability to provide safe and timely care for our patients. Thank you!”

Katie Schneider, MD



“As a mother-baby nurse, I am constantly looking for ways to broaden my experience and provide the best possible care to patients and their families. I am grateful for the opportunity to pursue my educational goals and give back to my local community.”

Jasmine Schofield, RN





John Valaas and Jim Torres, MD

## Generosity Makes A-Plus Emergency Care Possible

“I had the A-team with me from the moment I was wheeled into the St. Luke’s Wood River Emergency Department to my helicopter flight with Air St. Luke’s to St. Luke’s Meridian and throughout every interaction and procedure with St. Luke’s Wood River staff,” said John Valaas.

It was early Wednesday morning on February 23, 2022, when John had a stroke at his home in Sun Valley. Unable to speak and with no control over the left side of his body, he was rushed to the St. Luke’s Wood River Emergency Department.

When he heard the 911 call, Jim Torres, MD, immediately set the wheels in motion to care for John. Advance preparation is critically important

in cases of stroke, as the time to treatment has a dramatic effect on outcome.

John was rushed through the hospital for a CT scan, and Dr. Jim Torres determined John had suffered a stroke. Dr. Torres administered the clot-dissolving drug tPA (tissue plasminogen activator). Approved by the FDA in 1995, this drug is still one of the best treatments for ischemic stroke, but it must be administered within a three-hour window from the onset of symptoms for the most benefit. If given promptly, tPA can significantly reduce the effects of stroke and reduce permanent disability.

Administering tPA is complex and time sensitive. Our specialty-trained emergency physicians adhere



We are able to provide exceptional care because of the generosity of the valley and partnership with St. Luke's Wood River Foundation.



*Deb Robertson, MD*

to strict stroke protocols, which were developed by Dr. Torres, a Wood River emergency physician who served as stroke director for the entire St. Luke's system for several years. His established protocols are still used throughout the system.

For John, the drug was effective and quickly began to relieve his symptoms. He was then flown by the Air St. Luke's helicopter for specialty neurologic care at St. Luke's Meridian. By the time John arrived at Meridian, he had regained his speech and ability to move the left side of his body.

"I feel very fortunate with the high-quality care I received at St. Luke's Wood River," John said, "and I credit my rapid recovery to the quick and accurate care I received from Dr. Torres and the emergency room staff."

Stories such as John's remind us that highly coordinated emergency care saves lives.

"The Foundation makes it possible for the St. Luke's Wood River Emergency Department to have specially trained emergency medicine physicians who provide expert care," said Dr. Torres. "This is not the norm for a remote critical access hospital like ours."

Deb Robertson, MD, another Emergency Department physician and past director of emergency medicine for St. Luke's Wood River, reiterated this point.

"We live in a remote area with a large active population, so emergencies happen. Emergency care is the one health service that is available 24/7," Dr. Robertson said. "We are able to provide

exceptional care because of the generosity of the valley and partnership with St. Luke's Wood River Foundation."

Thousands of community members, including John and his wife Joan, are deeply grateful for the numerous times they have benefited from local emergency care. John and Joan, who divide their time between Seattle and Sun Valley, recognize this as a gift.

"We are a small community with big medical services on par with urban areas," said Joan. As patients at the hospital over the years, John and Joan agree they have had nothing but good experiences at St. Luke's Wood River, and they are impressed by the level of teamwork and collaboration.

"It is nice to be cared for by staff who are part of a health system," Joan said. "Each staff member has a large team backing them up."

Dr. Robertson agrees. "This teamwork is what makes emergency care at St. Luke's Wood River so effective. We can't do what we do without a well-oiled team. From the first responders to transport teams to the nurses, techs and specialists—emergency care is a team specialty," said Dr. Robertson.

While no two days are the same for staff in the Emergency Department, St. Luke's Wood River Foundation will support superior emergency care now and for years to come.

# Partnership and Local Support Provide New Homes for Health Care Workers

Every day Sandy goes to work to care for others.

Sandy works in a local St. Luke’s multispecialty clinic. She has been with the hospital for seven years as a certified nursing assistant. CNAs work directly with patients, doctors and nurses in the clinics and hospital. They help with the many essential tasks needed to provide high-quality patient care.

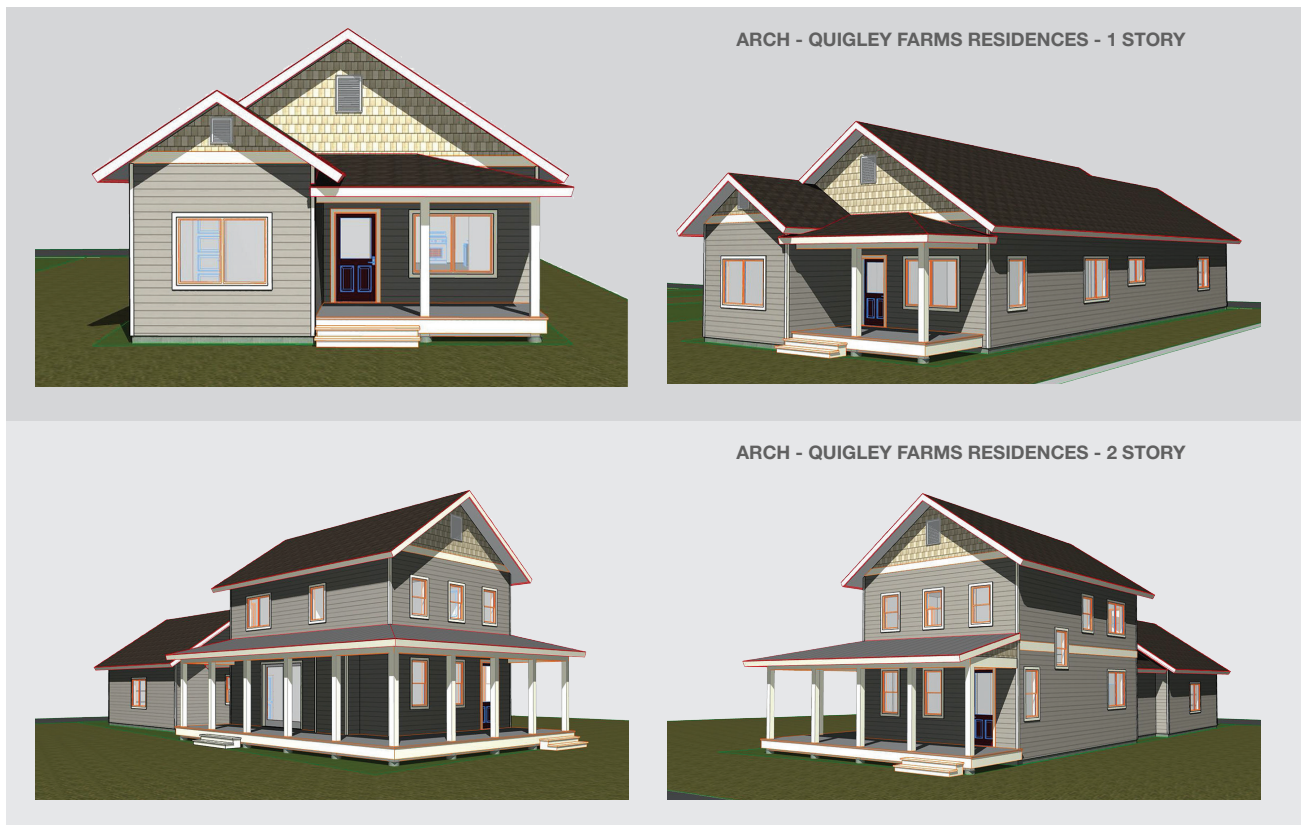
Sandy grew up in Hailey, attended Wood River High School where she got her CNA certification, and is now juggling work, being a single parent of two children, studying for her registered nursing degree and paying all the bills. She loves living in the Wood River Valley and caring for patients, but finding affordable housing was nearly impossible.

The lack of affordable housing in the Wood River Valley directly impacts the hospital’s ability to function at full capacity. Currently, St. Luke’s

Wood River and its clinics are seeking candidates for nearly a hundred open positions, a significant increase from previous years. When candidates are offered positions, refusals are common because workers cannot afford, or even find, housing in the Wood River Valley. Unfortunately, in recent years, the hospital has reduced service hours and, in some cases, diverted patients to other care facilities due to challenges in recruiting and retaining staff.

With local real estate prices rising and rental units in short supply—plus national health care industry trends, including early retirement, burnout and demand for traveling nurses—the task of staffing the hospital is challenging.

“It’s very difficult for our health care staff to find housing. We decided to help solve this critical issue,” said Almita Nunnelee, the chief operating officer, chief nursing officer for St. Luke’s Wood River.





Thanks to incredible community generosity and the partnership of St. Luke’s Wood River Foundation, St. Luke’s and ARCH Community Housing Trust, four new homes have been built and eight more are being constructed for St. Luke’s Wood River employees. ARCH, which is a nonprofit committed to affordable housing solutions, contributed the land and oversaw the construction. The Foundation and St. Luke’s committed \$4.7 million to build the new homes.

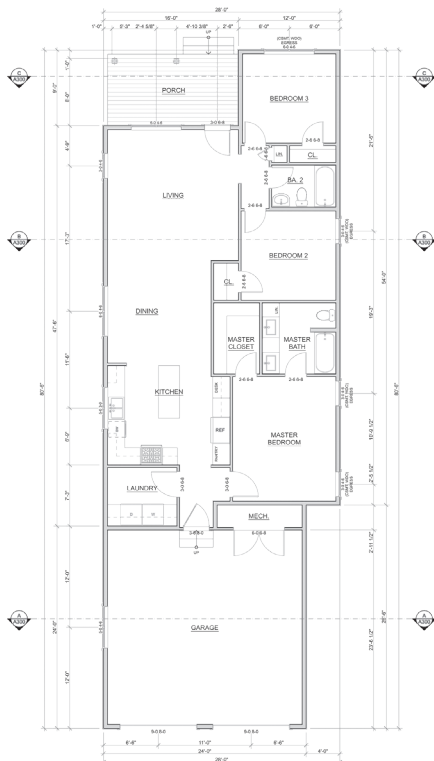
These light and spacious homes with attached garages provide employees places of their own, which they might not otherwise be able to find. This past year, Sandy was selected to live in one of the first new, single-family residences.

“Without this opportunity for housing, it would be a lot harder,” said Sandy. “I would have had to move in with my parents. With the housing market being so expensive, I would not be able to pay for my own place.”

Her new home provides Sandy and her children space and comfort. “It’s been great so far. The kids love the house. There is enough space so that we all have our own privacy,” she said.

The remaining eight homes in the housing initiative, four new homes in Bellevue and four in Hailey, will be completed in 2023. Contracts stipulate that continued employment at St. Luke’s Wood River is a condition for the housing. Employees are selected through a blind process based on their roles at the hospital.

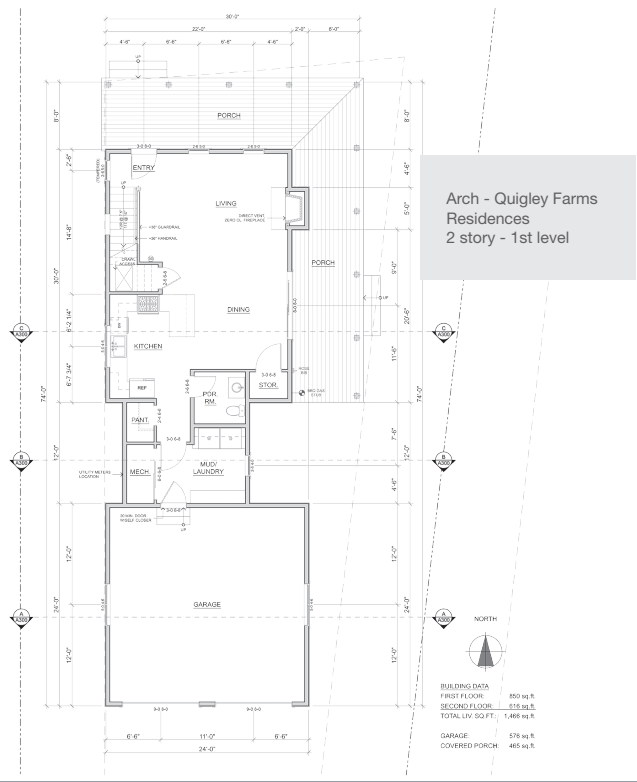
Local generosity is helping the hospital solve a critical issue and retain high-caliber employees who will ensure access to health care services in the future. Most importantly, the new homes for hospital staff offer housing stability, so employees like Sandy can provide the best possible patient care.



Arch - Quigley Farms Residences - 1 story

BUILDING DATA	
CONDITIONED SQ. FT.	1,438 sq. ft.
GARAGE	565 sq. ft.
TOTAL ENCLOSED	2,004 sq. ft.
COVERED PORCH	100 sq. ft.

PLAN NORTH



Arch - Quigley Farms Residences 2 story - 1st level

BUILDING DATA	
FIRST FLOOR	350 sq. ft.
SECOND FLOOR	318 sq. ft.
TOTAL LIV. SQ. FT.	1,468 sq. ft.
GARAGE	575 sq. ft.
COVERED PORCH	465 sq. ft.

“ If I didn’t have this opportunity, it would be a lot harder. I would have had to move in with my parents. With the housing market being so expensive, I would not be able to pay for my own place. ”

**Sandy, CNA**

# Gretchen Palmer's Legacy Supports Local Cancer Patients and Families

After the loss of loved ones, along with the deep grief, there is often also profound love and determination to honor their lives in meaningful ways. It is an opportunity for reflection, to remember the person who passed and to envision a tribute that amplifies their spirits for years to come.

One such beautiful tribute is the Gretchen Palmer Patient Assistance Fund, which was established in June 2022 by Gretchen's husband, Terry Palmer, and their three children, Teagen, Bergen and Grayson, to celebrate her exquisite life and light. It is a fund that embodies Gretchen's kindness, joy and beauty as well as her love for the Wood River Valley.

Gretchen was an incredible soul. In fact, she was "saintly special," said Terry. "She was even more beautiful inside than she was outside. She loved to laugh and help people."

Her heart and spirit were open, and she radiated kindness. Even throughout two years of battling glioblastoma multiforme, an aggressive brain cancer, Gretchen remained positive and strong. Her motto was, "The one thing we have to do is smile," which her family took to heart.

Gretchen moved to Sun Valley from Seattle in 1982. After time as a ski instructor, server and teacher, she became a successful model in the outdoor industry, which led her to run her own talent agency. She met Terry while skiing on Bald Mountain, and they raised their family in the Wood River Valley.

"My mom was kind, honest, athletic and always up for a new adventure," said Teagen. "She was the most amazing and loving mother, and I can only hope to live up to what she has instilled in us."

Gretchen loved the Wood River Valley so much, and the community who loved her back rallied to support the Palmer family after Gretchen's

diagnosis on Mother's Day in 2018. The support and love of their neighbors uplifted the family as they navigated the most difficult time of their lives.

"With my mom's cancer diagnosis came a lot of unknowns and a lot of expenses. There was no script or direction on how to navigate through those devastating times," remembered Teagen. "We did, however, have the best support system and community behind us every step of the way. This is one of the reasons we set up the Gretchen Palmer Patient Assistance Fund—because we believe that everyone deserves a community like ours to have their backs when times are tough."

The Gretchen Palmer Patient Assistance Fund was established in June 2022 as a restricted fund in St. Luke's Wood River Foundation. It assists patients fighting cancer and other serious illnesses with expenses, including transportation, lodging, utilities, groceries, medications, medical supplies and other necessary items. While many cancer patients have health insurance, there are significant additional out-of-pocket costs that often burden patients and their families, whom the fund also assists.

"Cancer is financially devastating, and you can lose your way when you feel your life closing in around you," said Terry. "We want this fund to ease this stress for patients and their families so that they can focus on their health and spending time with each other instead of worrying about the bills."

Currently, St. Luke's Center for Community Health in Hailey distributes the funds for those with oncology-related needs, and St. Luke's Cancer Institute in Twin Falls also has access to the funds to help people who live in the Wood River Valley and travel to Twin Falls for their treatment.

According to Sarah Seppa, director of engagement at the Center for Community Health, multiple cancer patients have used the funds so far, and the support has been critical. For example, one



*The Palmer family, left to right:  
Bergen, Alexis, Otto, Terry and Teagen.  
Not pictured: Grayson Palmer Crowley;  
Dewy, Cooper and Logan Crowley.*

man going through treatment for tongue cancer had a gap in his insurance and relied on financial assistance from the Gretchen Palmer Patient Assistance Fund to afford the feeding tube and required nutritional supplements. Another patient, prescribed a medication to help reduce tumor growth after radiation, sought the fund's assistance to pay for the medication.

These are just a couple examples of the positive impact the Gretchen Palmer Patient Assistance Fund has already had on the lives of community members in the Wood River Valley, and this is just the beginning.

“We want people to know that they have community support, just like we did,” said Terry. “This is a way to pay it forward and to amplify the love and kindness of our beloved wife, mother, grandmother, friend and community member.”

“ Cancer is financially devastating, and you can lose your way when you feel your life closing in around you. We want this fund to ease this stress for patients and their families so that they can focus on their health and spending time with each other instead of worrying about the bills. ”

**Terry Palmer**



Mark and Betsy Gates

## Legacy Society Members Help Shape the Future of Our Valley's Health Care

What inspires individuals to give to St. Luke's Wood River Foundation decade after decade? Ask Betsy and Mark Gates, avid supporters of the Foundation since they first contributed to the New Hospital Campaign in 1997, which launched the St. Luke's Wood River Medical Center we know today.

Humbly and without fanfare, Betsy and Mark have graciously contributed their time and resources for more than 20 years to ensure Blaine County residents have access to exemplary health care services. Along with other long-time donors, Betsy and Mark have helped build the bedrock of our

valley's well-being, which will endure for years to come. Their kindness, responsibility and passion have driven their giving, as well as their belief that our community thrives best when we recognize our interconnectedness.

Betsy and Mark first visited Sun Valley in the 1970s to ski with their three young children. They loved the winters, then discovered the summers and fishing. They eventually built a home here in the 1980s. While they continued to live part time in Woodside, California, their Sun Valley home was central to their children's lives and remains a

special place for all of them, including their ten grandchildren.

After their children were grown, Betsy was eager to do something for the place she loved, so she joined the St. Luke's Wood River Foundation's board of directors.

"Through accidents of mine, my children and grandchildren, I remained quite connected to the hospital over the years," Betsy remembered, laughing. "When I reflected on my interests, it was clear that supporting health care in the Wood River Valley had the biggest pull for me. I have always admired the St. Luke's Wood River Foundation staff because of their amazing impact on our community. It is such a privilege to be involved."

Now, decades after Betsy and Mark first supported the Foundation, they are members of its Legacy Society. Legacy Society members are those extraordinary individuals who shape the future

of our valley's health care by including St. Luke's Wood River Foundation in their estate plans. They also inspire others to become leaders in legacy giving. It is a way to make a meaningful difference that will endure beyond their lifetimes, impacting the lives of generations to come.

"I've always believed that St. Luke's Wood River Foundation is the heart of the community," Betsy said, reflecting on her commitment to the Foundation. "What would we do without it? It is the behind-the-scenes power for so much in our community, and so much help comes from the Foundation's donations. Without St. Luke's Wood River Foundation, it would be a different story."

Betsy and Mark exemplify what makes the Wood River Valley so special, leading by example and inspiring others to step up. Their desire to improve the well-being of our community is what drives their generosity.

“

I've always believed that St. Luke's Wood River Foundation is the heart of the community. What would we do without it? It is the behind-the-scenes power for so much in our community, and so much help comes from the Foundation's donations. Without St. Luke's Wood River Foundation, it would be a different story.

”

*Betsy Gates*

# Financial Health

Thanks to the steadfast generosity of our donors, the financial health of St. Luke’s Wood River Foundation is strong. Nearly \$3.2 million in philanthropic revenues was generously given during the 2022 fiscal year, with funds invested in workforce housing, new technologies, staff support, clinical education, health care scholarships, patient assistance and community health partnerships.

The Foundation continues to preserve and enhance capital through prudent management of our investment portfolio. Today, due to steadfast community generosity, the Foundation has more than \$29 million in assets that will advance the health of our community for years to come.

## St. Luke’s Wood River Foundation Statement of Assets and Net Assets

Cash Basis as of September 30, 2022

### Fiscal Year 2022

**Assets**

Cash	\$ 261,751
Investments, at Market	\$ 29,265,510

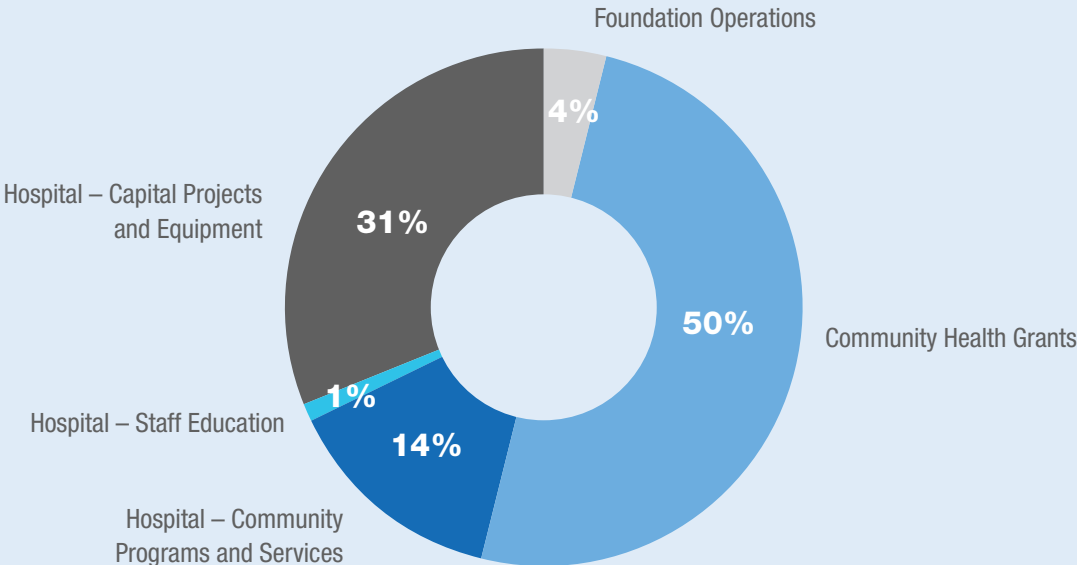
**Total Assets** **\$29,527,261**

**Net Assets**

Unrestricted	
<i>General</i>	\$ 17,957,613
<i>Board-Designated Endowments</i>	\$ 3,466,334
Permanently Restricted	\$ 8,103,314

**Total Net Assets** **\$ 29,527,261**

## Gifts Distributed



# In Appreciation

## 2022 Donors

*St. Luke's Wood River Foundation gratefully acknowledges the following individuals, foundations and corporations who made generous contributions Jan. 1 through Dec. 31, 2022. Thank you for partnering with us in our mission to inspire generosity that improves health and well-being in the community.*

### GIFTS OF \$250,000 AND GREATER

Ruth and Roger Miller\* Estate

### \$100,000-\$249,999

Kemmerer Family Foundation,  
Peter and Betty Gray  
Sharon McLain and Donald Dunbar

### \$50,000-\$99,999

Anonymous (2)  
Wendy and Jim Drasdo  
The Johnson Family Fund of the Ayco Charitable Foundation  
Marmot Foundation,  
Miren and Willis du Pont  
The Milias Foundation,  
Margot and Mitch Milias  
The Ambrose Monell Foundation  
Val A. Browning Charitable Foundation  
Julie Ann Wrigley Foundation,  
Julie Wrigley

### \$25,000-\$49,999

The Baker Family Fund at Spur Community Foundation  
Brown-Monson Foundation,  
Susan and John Monson  
Bundy Family Foundation,  
Christina E. Carroll  
Patty Duetting and Dick Hare\*  
Ross\* and Martha Jennings  
Pete and Bonnie\* Kremer  
The Martine and Dan Drackett Family Foundation, Inc.  
Gwende and Jim McComas  
McCrea Foundation,  
Cheryl and John Welsh III  
The Otis Booth Foundation,  
Debbe and Spike Booth  
Lynn Booth  
Robertson Foundation  
The Rogers Foundation  
Stephanie and Steve Shafran  
Sirius Fund  
The Ward Family

Elizabeth McGraw Webster and Maricich Paen Family Foundation  
Catherine and Tracy Wolstencroft

### \$10,000-\$24,999

Anonymous (4)  
AC Houston Lumber Co.  
The Albert Parvin Foundation  
AM Dachs Foundation,  
Alan Dachs  
Craig and Pam Bailey  
Barbara Boswell and Harold Robinson  
Cathie and Hanley Dawson  
John and Carey Dondero  
Draper Family Foundation Fund  
Megan and Chris Edwards  
Jana and Jeff Foushee  
Gardner Grout Foundation  
Mark and Betsy Gates  
George and June Block Family Foundation,  
Mathew Vanderkloot and Barbara Block-Vanderkloot  
Deana and Morley Golden  
Hemingway Hospital Trust,  
Jane Mason  
Margaret and Bob Houston  
Elizabeth and Steven Huish  
Bill and Jeanne Landreth  
Laural Foundation,  
Lauren Dachs  
Alison and Jim Luckman  
Hollyn and Sean Martin  
Cynthia and Kingsley Murphy  
Nancy Eccles and Homer M. Hayward Family Foundation,  
Walter Eisank and Hope Hayward  
The Nelles Foundation,  
Gail and Duane Nelles  
Cynthia and Randolph Nelson  
The Ochsman Foundation, Inc.,  
Esther and Michael Ochsman  
Vickie and Edward O'Gara  
The Palmedo Family Foundation Inc.,  
Brittain and Peter Palmedo  
Michelle Dumke Praggastis and Thomas Praggastis

Betsy and Bob Reniers  
Bob and Beth Rohe  
Sandy and Jodi Sanders  
Jessica and Jeff Sisson  
Sharon Peters and Keith Sivertson  
Verle Storey  
Peggy and Paul Street  
The Sue and Bob McCollum Family Foundation,  
Bob McCollum  
Sun Valley Company  
Walter and Janet Teagle  
Elizabeth C. and Thomas T. Tierney  
David and Trish Wilson  
Shay Doll and Buddy Wilton  
Priscilla and Ward Woods  
Workday Foundation,  
Carol and Greg Lindstrom  
Barbara and Stanley Zax

### \$5,000-\$9,999

Anonymous (3)  
Jan Aronson and Dominique Finas  
McNair and Will Bailey  
Sara and William Barrett  
Blank Family Foundation Inc.,  
Jerry Blank  
Bob and Penny Brennan  
Barry and Sylvia Bunshoft  
Bob Burkheimer  
Lynn Campion and Theodore Waddell  
Nancy Crandall and Stephen Wall  
Peter and Quin Curran  
Courtney and Terry Daniels  
Patricia and Gary Darman  
Susan and Jonathan Dolgen  
Michelle and James Fitzhenry  
Susan Flynt  
Ted and Linda Fouts  
Val Gillespie  
Gordon Ross Medical Foundation,  
Mary and Stephen Malkmus  
Tori Pinkerton  
The Great Day Fund,  
Jennifer and Jim Milgard  
Shirley and Harry Hagey

Peggy Hicks  
 Courtney and Steven Kapp  
 Ray and Louise Knowles  
 Koret Foundation,  
 Chris and Michael Boskin  
 Donald Kress  
 Alice Lane  
 Colin Lind  
 Aphrodite and Anastase Livieratos  
 Dr. Monica Lopez and Sameer Gandhi  
 Ann Morris  
 Donna Jean Morse  
 Ann Jones and Tim Mott  
 Janet Nathanail and William Flanz  
 Sheron and Roger O'Connell  
 Perlstein Foundation,  
 Jan Philipsborn  
 Wendy\* and Alan Pesky  
 Rhonda Robbins and Robert Bykerk  
 Bob and Karen Robideaux,  
 Robideaux Family Fund  
 The Roy A. Hunt Foundation,  
 Jodie and Daniel Hunt  
 Sam & Peggy Grossman Family  
 Foundation,  
 Peggy and Sam Grossman  
 Dr. Roger and Kathy Sanger  
 Laurie and Norman Schultz  
 Linda B. Segre  
 Paula and Alan Senior

Katherine and Stephen Sherrill  
 Betts Simon\*  
 Diane and Tom Smith  
 Richard Smooke and Family  
 Spook Stream and Laura Tanny Huang  
 Christal and Jeff Taylor  
 The Teagle Foundation Incorporated,  
 Walter and Janet Teagle  
 Joan and John Valaas  
 Warde Foundation Inc.,  
 Ann and Tom Warde  
 Warren and Sheryl Rosenfeld Fund of the  
 Oregon Jewish Community Foundation  
 Van Watkins  
 The William Chinnick Charitable  
 Foundation,  
 Nancy and William Swaney  
 Judy and Alex Woodard  
 Craven Young and Karen Oswalt

**\$2,500-\$4,999**

Anonymous (5)  
 Amanda Black  
 Kathleen and Hugh Blue  
 Bobbie and Art Dahl Fund in the Idaho  
 Community Foundation  
 The Borman Family  
 Boswell Family Foundation,  
 Barbara Boswell and Harold Robinson  
 Theresa and Terry Williams  
 Lorraine and Ron Wilcox

Bruce D. Smith and Anndel N. Kininmonth  
 Fund at The Chicago Community  
 Foundation  
 Pete and Nancy Buck  
 Carol P. Nie Fund at Spur Community  
 Foundation  
 Nancy and Charlie Cord  
 Susan and Frank Countner  
 Jim and Wendy Daverman  
 Mr. and Mrs. James W. DeYoung  
 Stacey and Lance Doby  
 Ann and Mark Edlen  
 Anne Edmondson  
 Linda and Bob Edwards  
 Elizabeth Pownall Swindells Family Fund,  
 James and Anne Crumpacker  
 Sue and Earl Engelmann  
 Sandra and Jim Figge  
 Julie Firestone  
 Janine and Alex Florence  
 Cynthia and Edsel Ford  
 Marcia and Bob Fosberg  
 The Frances Louise Wolfson Family  
 Foundation Inc.,  
 Frances L. Wolfson and Jeri Wolfson  
 Gay and Bill Fruehling  
 Robert and Kathryn Gardner  
 The Gerlits Family Fund at The Chicago  
 Community Foundation  
 Barbara and Michael Gettelman  
 The Gilhuly Family



Sarah Armstrong, DPT, a certified lymphedema therapist, provides treatment in the Wood River Valley.

## Generosity Helps Expand Lymphedema Treatment

In 2022, a generous gift by a Wood River donor made it possible to greatly expand lymphedema treatment in our community and beyond. The donation helped fund education and certification for St. Luke's physical therapists across Idaho through Norton School of Lymphatics, the gold standard for lymphedema treatment training. Lymphedema treatment is often beneficial to cancer patients or others who have undergone surgery involving the lymph nodes.

"Becoming a trained certified lymphedema therapist has given me the great privilege of providing a much-needed service to our community," said Sarah Armstrong, DPT, one of two certified Wood River lymphedema therapists. "Lymphedema therapy helps to improve functional mobility and quality of life for our community members struggling with chronic swelling conditions. I am grateful for the Foundation's dedication to maximizing our community's health and wellness."



Janine and Joe Gonyea  
Roger and Margaret Gould  
Wayne Griffin, Jr.  
Jill Grossman and Andrew Fradkin  
Ann and Dr. Mark Hansen  
Emily and Charles Hart  
Stephanie and Dr. Hatzembuehler  
Marianne and Bob Honey  
Mr. and Mrs. George H. Hume  
The James J. Colt Foundation Inc.,  
Robert Rand  
Adm. and Mrs. Jay L. Johnson  
Judy and Leon Jones  
Judith Warde Davis Foundation,  
Robert and Chrissy Davis  
Alan and Donna Kinsel  
Barbara Thrasher and Rick Koffey  
Kim and Mark Krouse  
Lana and David Latchford  
Dr. David D. Laxson  
Kathie Levison  
Marcia and Don Liebich  
Michael Mars and Terri Campbell  
Kiki and Wayne Martin  
Mary DeWitt Wilson Family Fund at Spur  
Community Foundation  
Jim and Willa McLaughlin  
John Milner and Kim Taylor  
John and Cherie Morris  
Mary and Matt Murray  
The Nalen Foundation,  
Kim Nalen  
Becky and Michael Neidorf  
Catherine Holbrook Newman and  
Geoffrey John Isles  
Gail and Dr. Robert O'Donnell  
Anita Braker and Dave Olsen  
Maureen and Barrett Ott  
Terry Palmer  
Jeffrey Parks  
Pasadena Community Foundation,  
Patsy and William Pinney  
Lyndell and Dr. Michael Paul  
Margo Peck  
William S. and Linda A. Potter  
Joy and Jack Prudek  
Jennifer and Peter Roberts  
Deborah Robertson, MD, and Jeff  
Lamoureux  
Sarah and Bill Robertson  
Kim and Chris Roth  
Carol Scheifele-Holmes and  
Benjamin Holmes  
The Seattle Foundation,  
Jean Enersen and Bruce Carter  
Silver Creek Outfitters,  
Susie and Terry Ring  
Becky and Pete Smith

The Swig Foundation,  
Susan Swig  
David B. Theobald  
Jill and Fred Vogel  
Ellen and John Wallace  
Sarah Wilcox  
Jane Woolley  
Sally and David Wright  
Bob and Patience Ziebarth

### **\$1,000-\$2,499**

Anonymous (3)  
Marie Stanislaw and Steve Abel  
Jane A. Acomb  
Renie Alverson  
Lyn and David Anderson  
Carol and Par Arvidsson  
Betsy and John Ashton  
Don and Judy Atkinson  
Lexa and David Ayer  
Bachman Foundation,  
Lynda and Nate Bachman  
Howard Banchik  
Mr. and Mrs. Mark Baumgardner  
Corinne and Kirk Beardsley  
Peter and Ruby Becker  
Carolyn and Donald Benson  
Rebecca Follo and Tom Bentley  
Frances and Edward Blair, Jr.  
Beverly Boas  
Sharon Bockemohle  
Bowles Lawrence Foundation,  
Jill and Mark Lawrence  
Angela Brady  
Bretall Family Fund of the Silicon Valley  
Community Foundation  
Barbara Capik  
Dr. Joel Carlson  
Dan and Micki Chapin  
Jeff, Kathy, Jack and Robert Cilek  
Erin and Neil Clark  
Christin Cooper  
Katrina Cord  
Karen and Carter Cox  
Creekside Foundation,  
Kate and Eric Dachs  
Susan Crowe  
Carolyn and Woody Cullen  
Missy\* and Tipp Cullen  
Ronald and Vicki Currie  
Anthony and Judy D'Angelo  
DeBard Johnson Foundation,  
Janet and Roger DeBard  
Elizabeth and Mark De Reus  
Ceil and Tony Dibuono  
Lucy and John Douglas  
Dr. Amy Drumm

Cyndi and Brad DuFur  
Rick and Candace Emsiek  
Ben and Robyn Enders  
Mrs. Susan A. Engs  
Stephanie and Andy Evans  
Dan S. Fairman, MD  
James Farley  
Jim, Chrissy and Hilary Field  
Carol and Paul Fremont Smith  
Elaine and John French  
Judy and Ernie Getto  
Stuart and Rivian Glickman  
Marcia Grabow  
Margaret B. Gray  
The Green Karas Family Fund at Spur  
Community Foundation  
Barbara and Tod Hamachek  
Richard Hedreen  
Geri Herbert  
Bobbie and John Herrell  
Dr. Bart Hill  
Harvey Hinman  
Bob and Ashley Houston  
Pamela Irby  
Elinor and Ross Jannotta  
Kristen Jarvis  
Mr. and Mrs. Tim P. Johnson  
Randi and John Kanellitsas  
Steven and Emily Karassik  
Joseph E. Kasputys  
Kathy and Jerry Kavka  
Kaye and Gerry Kearns  
Cindy and George Kirk  
Matthew and Malie Kopplin  
Madi Kraus  
Cookie and Michael Lafferty  
Marge and Jeffrey Lewis  
Angela Brown Linburg  
LeeAnne and Chris Linderman  
Elizabeth and Scott Lucas  
Mark Madden  
Dorrie and David Marks  
Carla and John Marshall  
Ed Matthews and Vilma Keri  
Murray McClain  
Wilson D. McElhinny  
Mehran Family Foundation,  
Alex and Carolyn Mehran  
The Melly Foundation,  
Patricia Klahr and Lee S. Melly  
Denise and Peter Merlone  
Claudia and Laine Meyer  
Jane and Steve Mitchell  
Moos Family  
Julie Weston and Gerry Morrison  
Amber Busuttill Mullen  
Dr. Bettina Murray

Katie and Ken Naylor  
Christine and Philip Neuhoff  
Judith and Donald Nickelson  
Ellanor and Russell Notides  
Almita Nunnelee  
John and Linda O'Connor  
Nicholas and Stephanie Osborne  
Panache,  
    Kathy Crosson  
Yvonne Parrish Levin and Wilford Levin  
Susan Parslow and Dr. Paul Monahan  
Dr. Stephen and Marylyn Pauley  
Suzie and Garry Pearson  
Kandis Pedersen Romero  
Connie and Tony Price  
JP Prouty  
Susan Reinstein and Brian Ross  
Carlyn Ring  
James Robinson III  
Julie and Preston Sargent  
Tom and Jill Schriber  
Ann and Irwin Sentilles  
Suzanne Shaw  
Sheree and John Shoch  
The Shoop Family  
Sue and Steve Silk  
Vinton and Amelia Sommerville  
Steve and Julie Meineke Family  
Foundation  
Tim and Kathy Stevens  
Megan and Justin Stevenson  
Nan and Larry Stone  
Julie and Peter Stott  
Charles Stuhlberg  
Maggie and David Sturdevant  
Karrie Swaner  
Shirley and James Tallackson  
Megan and Adam Tanous  
Ann and Doug Taylor  
Beth and Mike Toal  
Reva and Bill Tooley  
Tracy and Greg Johnson Foundation  
Lois B. Ukropina  
Diana and Mallory Walker  
Peter Weaver  
Lisa and Dave Whorton  
Anne Marie and Peter Wick  
Kathryn Woods, MD, and  
    Richard Paris, MD  
Jeri L. Wolfson Foundation,  
    Jeri Wolfson  
Patricia Zebrowski and Roland Wolfram  
Cheryl and Peter Ziegler

### **\$500-\$999**

Anonymous (6)  
Charlotte and Dr. Terry Ahern

Jeanne Andlinger  
Barbara and Chip Angle  
Sam Appleton  
Drs. Thomas Archie and Heidi Woog  
Samuel H. and Mary Jane Armacost  
Ms. Mary Bachman and Mr. William  
    Downing  
Geri Bidwell  
William S. Bishop  
Dr. Christopher J. Bodle  
Brian and Debbie Bothwell  
Josh Bowyer  
Shannon and Will Brandenburg  
Brett W. Baker Family Fund of Oregon  
Community Foundation  
Elizabeth and Jack Bunce  
Charles Carlson  
Joanne and Thomas Chase  
Tom Christie  
Steven Clayton  
Carolyn and Charles Coiner  
Community Foundation of Louisville,  
    Carolyn and Julian Van Winkle  
Julie and Michael Cord  
Kate and Peter Daly  
Lauren and Richard Davis  
Megan D. Davis  
Karen and Marc de Saint Phalle  
Penny and Ken Durant  
Maureen and Jonathan Edwards  
Maija and Al Eerkes  
Ann Ellis  
Timme and Peter Feininger  
Charles and Nancy Ferries  
Barbara and Jim Figge  
Diana Hoover Filkins  
Linda Fischer  
Jesse Foster  
Dr. and Mrs. Charles D. Fraser, Jr.  
Sheila and Dates Fryberger  
Sandee and Josh Gehrke  
Liz and Alex Gray  
Elliot Gray  
Kelly Hale  
Happy Hawn  
Patricia and Alex Higgins  
Sally Horn  
Dr. Derek Ipsen  
Virginia Johnson  
Jeralyn Jones  
Laura and Scott Jordan  
Frank and Peggy Kappler  
Nicole and John Kearney  
Gina and Rich Kelley  
Karin Knott  
Amy and Stephen Kroll  
Dr. Karin Lindholm

The Lipman Family  
Katie and John MacCarthy  
Dabney and Dr. Mann  
Katrina and Joseph McNeal  
Dr. Leigh Morse  
Robert Mueller  
Betsy Mullins  
Mitch Norton  
Suzanne and Alex Orb  
Judy and Herb Patriarche  
Joanna Peters  
Erin and Jeffrey Pfaeffle  
Elaine and Mike\* Phillips  
Amanda Pool  
Nelva Ramirez  
Rhea S. Schwartz and Paul Martin Wolff  
    Foundation  
Hollie Roberts  
Juli and Michael Roos  
Wally Rothgeb  
Nina Rothstein  
Mike Roundy  
Cathie Royston  
Carole and Mike Sampson  
Pam Sandine  
Bill Schliiter and Gloria Kimball  
Gale Shaw  
Shannon Shields and Dr. Frank Batcha  
Lisa Stelck and William Boeger  
Misty and Jason Strait  
Jim Torres, MD  
Yvonne and Otto Tschudi  
The Villas  
Linda and Gary Vinagre  
KC and Al Vincelette  
The Von Der Heyden Family Foundation,  
    Ellen and James Gillespie  
Cheryl and Dr. Seth Wheeler  
Kevyn Wynn  
**\$100-\$499**  
Anonymous (41)  
Shelly A. Abell  
Craig and Vicki Aberbach  
Jon and Mary Adams  
Pauline Adams  
Jami Adrian  
Courtney Altringer  
Joan Anderson  
Steve Appling  
Bruce Armstrong  
Melissa Avison  
The Barmen Moser Charitable Fund of  
    the Jewish Community Foundation of  
    Greater Pittsburgh  
Beatriz Barriga  
Jodi Barsch  
Brent Barsotti

Janet Barton  
 Paul Bates  
 Mary Kaye Bennett  
 D'Layne Benson  
 Kathryn Beste  
 William Beya  
 Benson Blair  
 Kristen Bohachef  
 Scott Bohannon  
 Tara Boothe  
 Bryan Bridwell  
 Minnette and John Broschofsky  
 Patty Brothwell  
 Alyson Brown  
 Stephen Brown  
 Susan Browning  
 Fred and Sandy Bryant  
 Alison Burpee  
 Dr. Tracey Busby  
 Lynn and Craig Cahen  
 Dixy Campbell and Mark Hamby  
 Joe Cannon  
 Nikki Capps  
 Delilah Carden  
 Ragna Caron  
 Grant Carter  
 Araceli Castanos  
 Maria Castanos  
 Marilyn and Tullio Celano  
 Curt and Linda Chambers  
 Kaye and BJ Chaney  
 Lorena Chavez  
 Sasha Chavez  
 Brownell and Douglas Cochran  
 Norman Cocke  
 Maria Collins  
 Dr. Garrett Coman  
 Jane Conard and Rick Maneval  
 Jennifer Cook  
 Lawrence Crane  
 Robin and Mike Crotty  
 Grayson Crowley  
 Betsy and Roger Dailey  
 Susan and Jack Daliera  
 Betty and Keith Daniel  
 Peter Davenport  
 Patricia Davies  
 Joanne I. Davis  
 Lari Lee Davis and Daniel Dolan  
 Jack and Jeanne Davisson  
 Peggy Dean  
 Eva and Jim DeWolfe  
 Stefani and Pete DiDio  
 Jennifer and Brent Diehl  
 Patricia and Peter Dinkelspiel  
 Ross Dinkelspiel  
 Caryle and Dennis Dombrowski

Maureen Dougherty  
 Amy Downey  
 Scott Draper  
 Elaine Durkheimer  
 Gail Dwyer  
 Robin and Sam East  
 Jerry and Kathleen Eder  
 Kenneth and Marsha Edwards  
 Dr. Cathryn Erickson  
 Jill and Mark Eshman  
 Beatrice and Blas Espinoza  
 Cindy and Mike Fabian  
 Kacey Fairfield  
 Joseph and Ellen Fastow  
 Pam Feld  
 Michelle Ferry  
 Molly Finegan  
 Erin Finnegan  
 Melody Flade  
 Marybeth Flower  
 Mary Kay Foley  
 Michaela and Peter Forelli  
 Jeanne and Roger Foreman  
 Jim Foudy  
 Gretel and Charles Friedman  
 Joyce Friedman  
 Steven Galbraith  
 Rita Garcia  
 Rosa Garcia  
 Sandi Garcia  
 Traci Gaudreau  
 Sally Gillespie  
 L'Anne Gilman  
 Claudia and James Glass  
 Glenna Glover  
 Elizabeth Gonzalez  
 Ed L. Grubb  
 Kim and John Gunning  
 Jennifer and Fritz Haemmerle  
 Randy Hall  
 Daniel and Kathleen Hansen  
 Kay Harden  
 Chip and Mary Hart  
 Gundl and John Haskell  
 Karen Hawkes  
 Johni Hays  
 Lynne and Stephen Heidel  
 Alice Hennessey  
 Linda Hillman  
 Caroline Hobbs  
 Karen Hofman  
 Lauren Hoover  
 Inge and Hans Hub  
 Elizabeth Hubbard  
 Carolyn and Stephen Hubbs  
 Larry and Mimi Huck  
 Tonya Hunt

Lori Israel and William Lennon  
 Siobhan Jameson  
 Glenn Janss  
 Wendy and Jim Jaquet  
 Linda H. Jensen  
 Theresa Jensen  
 Jewish Foundation of Greensboro,  
 Susan and Ron Green  
 Hilary and Steve Job  
 Letitia and Tom Jochums  
 Jerry and Debbie Johnson  
 Melinda Jones  
 Eileen Judell  
 Barbara Julian  
 Robert Kaplan and Susan Passovoy  
 Robin Keller  
 J.P. Kelly  
 Stephanie Kelly  
 Jonah Kendall  
 Michael Kilchenstein  
 Jennifer King



B.J. and Kaye Chaney enjoying a bluebird day on Bald Mountain.

## Caring for Our Caregivers

This past year, the Foundation invested in 14 corporate Sun Valley ski passes for the St. Luke's Wood River team. Our health care workers enjoyed more than 600 ski days on Bald and Dollar Mountains. Additionally, the Circle of Friends Fund and the Carol and Pat McLaughlin, MD, Endowment Fund provided need-based assistance to over 50 employees. These investments are part of the Foundation's ongoing commitment to help recruit, retain and support the well-being of critical health care employees.



The food and nutrition team had 100% participation in the 2022 Employee Giving Campaign.

### Employees Give Generously

In 2022, a record 91% of St. Luke’s Wood River physicians and 92% of employees supported St. Luke’s Wood River Foundation during the annual Employee Giving Campaign. “I am humbled by the generosity of the employees,” said Megan Tanous, chief development officer for the Foundation. “St. Luke’s Wood River employees are deeply committed to providing superior, patient-centered care and are an integral part of our generous community of donors.”

- LeRoy Kingland
- Henry Kirscht
- Carole Klein
- Anita Kratochvil
- Wolfgang Kuhn
- Teresa and Kevin Laird
- Valerie and Marty Lakey
- Landmark Charitable Foundation Inc.,  
Damaris D.W. Ethridge Ford and Frank Ford\*
- Joan and Ron Lane
- Sheryl Laureano
- Coleman Lay
- Annie Leady
- Wanuzza Leal Wallace
- Greg Lewis
- Roy Lightbody
- David Lindow
- Bernadette Lingenfelter
- Sharon and Richard Linville
- Jeanne Liston
- Carolyn and John Lloyd
- Marta\* and Ignacio Lozano
- Jason Lyman
- Julie Lyons, MD
- Becky Madrigal
- Leslie and Jon Maksik
- Bonnie Marsh
- Lawrence Mast

- Mary Matthews
- Claudia McCain
- Chris McCarthy
- William T. McConnell
- Anne and Lanny McLean
- Kathryn and Matt McNeal
- Jenn Merrick
- Merrill Lynch, Pierce, Fenner & Smith Inc.
- Fan and Jimmy Moberg
- Heather Moller
- James Monger
- Tiffany Montoya
- Jill Morse
- Tina Murphy
- Adrian Norris
- Michel Nunez
- Terry O’Connor, MD
- Tina O’Donnell
- Charles Olson
- Margie and Jack Oosting
- Bergen Palmer
- Teagen Palmer
- Brandy Parish
- Lance Parish
- Sarah Patterson
- Carol Penagos
- Mindy and Bill Pereira
- Jim Perkins
- Keith and Paula Perry, Perry’s Restaurant

- Trina and Jake Peters
- Mary and Greg Peterson
- Mike and Pam Pierce
- Dona Piercy
- Doren Pinnell
- Lisa Platter
- Jeff Poggi
- Kristin Poole
- Guy and Sara Power
- Marjorie Praegitzer
- Shery Quinones
- Michele Randall
- Brenda Randall-Jensen
- Viki Rankin
- Guadalupe Raygoza
- Dr. and Mrs. Reeck
- Kari and John Regan
- Matt and Stephanie Reichert
- Millie and Keith Reidy
- Marc and Chris Reinemann
- Rebecca Reitinger
- Kerry Renner
- Mark Rice
- Amanda Rich
- Beva Robinson\*
- Carmen Rojas
- Cristina Romero
- Sylvia Romero
- Nicole Roos

Bennett Rose  
 Kate and Bob Rosso  
 Janie Rothschild  
 Erik Ruggeri  
 Crystal Ruhter  
 Deb and Rob Santa  
 Mary Santosuosso  
 Ms. Joanna Sattler  
 Jill Saunders  
 Kyle Schweitzer  
 The Seattle Foundation,  
 Lynn, Lisa and Judy Sweeney  
 Shelli and Robert Seely  
 Sarah Seppa  
 C. Kellee Serrano  
 Connie and Jay Shafran  
 Cherie Shardlow  
 Darlene and Thomas Shilling  
 Elizabeth Shoemaker  
 Marylen Sierra  
 Tim Skaling  
 Kelli Skelton  
 Alison Smart  
 Smey Family  
 Becquel and Jeff Smith  
 John Sofro  
 Frances Solano  
 Katherine Sondland  
 Max Sondland  
 Barbara Spallino  
 Jim Speck

Ken Steinauer  
 Nicki Steinberg  
 Monique and Thomas Stern  
 Karen Stevens  
 Alan and Gayle Stevenson  
 Jenny Stireman  
 Bob and Betty Stone  
 Chyanne Stowell  
 Emily Strait  
 The Stumph Family  
 Bill Sundali  
 Cynthia and John Sutton  
 Maribel Tamayo  
 Jazmyn Tapia  
 Tara Bella Flowers  
 Janine and Neil Tarte  
 Brant Tennant  
 Lou Ann and Sean Terry  
 Kat Theobald  
 Catherine and Eric Thomas  
 Diana Thompson  
 Elizabeth Chabner Thompson  
 Hazel Thorne  
 Susan Tryon  
 Gail and Barry Tuohig  
 Sally and Roger Turner  
 Jan and Mike Turzian  
 Osiel Silva Valencia  
 Zachary Venzon  
 Lynne Wade  
 William Wallace

Krista Ward  
 Ms. Gay Weake and Mr. Jay Cassell  
 Amber Weber  
 Liza Weekes  
 Julie Weil  
 Libby and Robert Weil  
 Carolyn Wicklund  
 Mary and Charley Williams  
 Sharon and Russell Williams  
 Paul C. Willis  
 Charles Wister  
 The Wohlwend Family  
 Susan Wolford  
 Etta Wood  
 Tricia Wood  
 Caroline Woodham  
 Wood River High School  
 Wood River Women's Foundation  
 Members' Fund in the Idaho  
 Community Foundation,  
 Terri LeFavre  
 Janet Wygle and Barry Luboviski  
 Chosita Yenphiboon  
 Bebe Yoder  
 Jody and Chris Zarkos  
 Christi Zommers

**\$0-\$99**

Anonymous (26)  
 Lucy Abrahams  
 AmazonSmile  
 Alondra Arevalo



**Clinic Opens for Patients in Need**

This past year, St. Luke’s Wood River Foundation supported Family Health Services, a federally qualified health center and nonprofit, in its efforts to expand care for our most vulnerable community members. In January 2022, Family Health Services

opened a medical, dental and behavioral health clinic with pharmacy services in Bellevue.

Through generosity, the Foundation helped make the clinic a reality with a \$1 million startup grant.

“We are grateful to the many people who have helped put St. Luke’s Wood River Foundation in the position of strength from which it could invest in a solution that will help so many families,” said Foundation board past president Megan Dawson Edwards.

The clinic serves the uninsured and under-insured in Blaine County. “I believe this is one of the most impactful efforts we have undertaken,” said Megan Tanous, chief development officer for the Foundation. “Due to financial situations, people who might not otherwise have access to health care and dentistry services will now be able to get excellent medical care.”

Sarah L. Armstrong  
 Nelida Arroyo  
 Kelly Askew  
 Nancy Lopez Astocondor  
 Kathleen Bean  
 Nate Bechtel  
 Mary Beck  
 Kay and August Benz  
 Kristin Bevers  
 Candy Bland  
 Anne and Greg Bloomfield  
 B. Boyer  
 Jolene Boyer  
 Marcia and Henry Brown  
 Logan Burke  
 Nello and Jenny Busdon  
 Kathy Butler  
 Amanda C.  
 Orlando Cabrero  
 Stefanie Caliva  
 Justin Calvin  
 Allison Cannon  
 Blair Choate  
 Lisa Cincera  
 Anne Cook  
 Chuck and Barbara Corwin  
 Ken Crane  
 Yesica Crisostomo  
 Berenice Crowder  
 Gabriela Cruz  
 Da Vinci's,  
 Jennifer and Larry Schwartz  
 Dena Deckard  
 Irene Celis Del Castillo  
 Eric Demment  
 Christina Diaz

Kathy Dick  
 Justin Diggins and Jenny Lopez Diggins  
 Jack Donnelley  
 Grace Sundali Donovan  
 Anita Dromey  
 Ryan Dubzak  
 Mohammed Elshafei  
 Sabrina Espinoza  
 Robert Figgat  
 Suzanne and Jack Finney  
 Joan B. Firman  
 Ann D. Flowerree  
 Jeanne Flowers  
 Joyce Fogg  
 Madisyn Frazier  
 Teresa Garen  
 Mandy Gaspar  
 Naeoming George  
 Ruben Gomez  
 Jessy N. Gonzalez  
 Raquel Gonzalez  
 Tina Gonzalez  
 AJ Gravel  
 Kay Griffith  
 Emily Hairston  
 Logan Hale  
 Lisa Hammond  
 Kayla Hutchison  
 Joe Inman  
 Shannon Ivins  
 Royal Johnson  
 Megan Jones, RN  
 Scott Kelly  
 Judith Kindler and Kyle Johnson  
 Kelsey Knorzer  
 Heidi Knowles

Taylor Koerner  
 Maria Leal  
 Tiana Lee  
 Gordon Lemon  
 Leith Lickteig  
 Betty Lira  
 Graham Loomis  
 Delia Lopez  
 Abigail Mallory  
 Samantha Manning  
 Heidi Marcum  
 Kelly and Bruce Martin  
 Lexi McCloughry  
 Brittany McFarland  
 Marie Elena McGonigle  
 Ethan McKee-Bakos and Mia Briggs  
 Michelle Medsker  
 Reyna Mejico-Castro  
 Mirian Melgar  
 Vesmina Melkic  
 Judith Meyer  
 Abby Mills  
 Rodrigo Molina  
 Megan Mondragon  
 Erika Monjaras  
 Robert L. Morrison  
 Jeanne Mowlds  
 Kourtney Murphy  
 Saraluz Nava  
 Bruce Nelson  
 Susan Neuner  
 Tina Niemiste  
 Kerry Nilsen  
 Alec Nordsieck  
 Bruce Norvell  
 Bev and Jeff O'Lear

## Fund Provides Financial Support for Patients

The Keith Sivertson, MD, Compassionate Care Fund provides critical assistance to patients in need. This program, designed to encourage health and healing by helping patients with significant financial hardship, recognizes that easing the burden of medical costs is incredibly important to improving patient outcomes. Last year, the program helped 146 patients and distributed \$61,903. The results demonstrate the program helps improve the health of its recipients, as only 6% were readmitted to the hospital.

## Keith Sivertson, MD, Compassionate Care Program in 2022



**146**

Patients supported.



**51**

Average age of patient.



**\$424**

Average spent per patient.



**\$61,903**

Total provided to patients.

Data as of Sept. 30, 2022.

Carol O'Loughlin  
Sharon Olson  
Ines Orihuela  
Molly and Tom Page  
Melanie Paisley  
Nur Jameel Pananggi  
Tana Parke  
Nancy Parsons-Brown and David Brown  
Brad Patriarca  
Gladys Paucar  
Christine Peterson  
Natalie Piteo  
Justin and Janell Porter Family  
Cynthia Preston  
Margaret Quispe  
Jennifer Rablin  
Lynn Ramm  
Charmaine Ramos  
Angela M. Rayborn  
Patricia Reay  
Yuliana Regalado  
Kami Richardson  
Beverley Robertson  
Rosa Robles  
Joana Rocha  
Hayley Rosen  
Tamara Saleen  
Belia Salinas  
Stephanie and Clay Sammis  
Kati Sanders  
Adele and Pat Savaria  
Tera Schirf  
Ryan Schmidt  
Brigid Sears  
Mikayla B. Seburn  
Miriam Serrano  
John Shephard  
Krista Sherbine  
Tessica Sherburne  
Lauren Shirley  
Deborah and Mark Slonim, MD  
Elizabeth Solis  
Hadly Steel  
Laurie and Marc Steinberg  
Mary Stoecklein  
Tasche and Jess Streib  
Cari and Steve Subith  
Edokiya Swanson  
Taeler Szczotka  
Laura Targett  
Earl and Nancy Thompson  
Hans Thum  
Kjersten Timoney  
Jordan Tuffield  
Alejandra Hurtado Valencia  
Jesse Vanderhoof

Sarah Vukelich  
Taylor Walsh  
Lilyan Ward  
Kasinda Wesley  
Naomi White  
Katie Whittier  
Sarah and John Whittle  
Laurie Wick  
Jess Wright  
Teresa Wright  
Marilyn Yaeger  
Marvel Yamada  
Kaitlyn Yeager  
Jill Zelaya

### **MATCHING GIFTS**

American Online Giving Foundation/  
Benevity Fund, Dr. Roger and Kathy  
Sanger

### **GIFTS IN KIND**

Monika and Elmen Bloedel  
Michael Breen  
Anne and Mike Brunelle  
Clearwater Landscaping  
Shay Doll and Buddy Wilton  
Elle Rose  
Kristy Logan  
Rochelle Runge  
The Picket Fence  
Willow Papery  
Carol Scheifele-Holmes and Benjamin  
Holmes  
Jennett and Erik Zimmerman

### **GIFTS MADE IN MEMORY OF**

Ger Rudolf Andlinger II  
by Jeanne Andlinger  
Bob "Beats" Beattie  
by Sam Appleton  
Lynne Bockemohle  
by Sharon Bockemohle  
JoAnn Boswell  
by Dr. Stephen and Marylyn Pauley  
Jack Bowers  
by Lou Ann and Sean Terry  
Craig Campbell  
by Dixy Campbell and Mark Hamby  
Emil Capik  
by Barbara Capik  
Gary Crowe  
by Susan Crowe  
Missy Cullen  
by KC and Al Vincelette  
Dr. Leon Ellis  
by Ann Ellis  
Sean Flynn

by Angela Brown Linburg  
by Carolyn and John Lloyd  
Norman Friedman  
by Joyce Friedman  
Carl Gray  
by Margaret B. Gray  
Harvey Gray  
by Margaret B. Gray  
Judy and Greg  
by Tasche and Jess Streib  
Jeanie Kearney  
by Gretel and Charles Friedman  
by Nicole and John Kearney  
Kelly Patrick Longe  
by Alan and Donna Kinsel  
Dick and Jeanine Loudon  
by Anonymous  
by Mary Kaye Bennett  
by Scott Bohannon  
by Susan Browning  
by Elizabeth Hubbard  
by Dave and Mindy Jones  
by Navy Federal Credit Union  
by Susan Neuner  
Marta Lozano  
by Ignacio Lozano  
Miclaine Miller  
by Anonymous  
William E. Norris  
by Adrian Norris  
Gretchen Palmer  
by Anonymous (5)  
by Brett W. Baker Family Fund of  
Oregon Community Foundation  
by Jodi Barsch  
by Geri Bidwell  
by Chris and Michael Boskin  
by Minnette and John Broschofsky  
by Joe Cannon  
by Grant Carter  
by Carolyn and Charles Coiner  
by Christin Cooper  
by Julie and Michael Cord  
by Lawrence Crane  
by Kate and Peter Daly  
by Peggy Dean  
by Ann and Mark Edlen  
by Jill and Mark Eshman  
by Gretel and Charles Friedman  
by Val Gillespie  
by Janine and Joe Gonyea  
by Kelly Hale  
by Sally Horn  
by Glenn Janss  
by Kristen Jarvis

by Jonah Kendall  
 by Karin Knott  
 by Leslie and Jon Maksik  
 by Kiki and Wayne Martin  
 by Penny\* and James Monger  
 by Betsy Mullins  
 by Katie and Ken Naylor  
 by Alec Nordsieck  
 by Bruce Norvell  
 by Nicholas and Stephanie Osborne  
 by Terry Palmer  
 by Bergen Palmer  
 by Juli and Michael Roos  
 by The Seattle Foundation, Lynn, Lisa and Judy Sweeney  
 by Suzanne Shaw  
 by Lisa Stelck and William Boeger  
 by Bill Sundali  
 by Laura Targett  
 by Kat Theobald  
 by Yvonne and Otto Tschudi  
 by The Von Der Heyden Family Foundation, Ellen and James Gillespie  
 by Warren and Sheryl Rosenfeld Fund of the Oregon Jewish Community Foundation by Anne Marie and Peter Wick  
 by Sharon and Russell Williams  
 by Caroline Woodham  
 Wendy Pesky  
 by Jerry and Kathleen Eder  
 by Ellen and John Wallace  
 Dr. Steven Platt  
 by Sharon and Richard Linville  
 Alan Reynolds  
 by Janet Wygle and Barry Luboviski  
 Ron Santosuosso  
 by Mary Santosuosso  
 Carol Shephard  
 by Anonymous  
 by Patricia Davies  
 by Barbara Julian  
 by Carole Klein  
 by Bernadette Lingenfelter  
 by Jim and Willa McLaughlin  
 by John Shephard  
 by Susan Tryon  
 by Gail and Barry Tuohig  
 by Janet Wygle and Barry Luboviski  
 Jane Shoemaker  
 by Jim Speck  
 Will Storey  
 by Verle Storey  
 Troy  
 by Joan and Ron Lane  
 Jim J. Walker  
 by Anonymous

Marnee Wirth  
 by Ellen and John Wallace  
 Dr. Morton Woolley  
 by Jane Woolley

**GIFTS MADE IN HONOR OF**

Dr. Tom Archie  
 by Spook Stream and Laura Tanny Huang  
 Delvin Ash  
 by Anonymous  
 Dr. Randy Barnes  
 by Peggy Hicks  
 Dr. Frank Batcha  
 by Chuck and Barbara Corwin  
 Dr. Tracy Busby  
 by Cindy and Mike Fabian  
 by Connie Grabow\*  
 by Gail and Dr. Robert O'Donnell  
 Danielle Crist Carruth  
 by Mike Schirmer  
 Dr. Garrett Coman  
 by Barbara Thrasher and Rick Koffey  
 Anita Dromey  
 by Betsy and John Ashton  
 Dr. Amy Drumm  
 by Anonymous  
 Dr. Robert Duerr  
 by Carole and Mike Sampson  
 Marsha Edwards  
 by Vicki Aberbach  
 Emergency Department Staff  
 by Betsy and John Ashton  
 by Jack and Jeanne Davisson  
 by Cindy and Mike Fabian  
 by Stuart and Rivian Glickman  
 by Margaret and Bob Houston  
 by Ross and Martha Jennings  
 by Judith Meyer  
 by Bev and Jeff O'Lear  
 by Earl and Nancy Thompson  
 by Tricia Wood  
 Dr. Dan Fairman  
 by Jon and Mary Adams  
 by Betsy and John Ashton  
 by Barry and Sylvia Bunshoft  
 by Nello and Jenny Busdon  
 by Pam Feld  
 by Glenna Glover  
 by Carla and John Marshall  
 by Murray McClain  
 by Gwende and Jim McComas  
 by Wendy\* and Alan Pesky  
 Jesse Foster  
 by Patricia Davies  
 by Joseph and Ellen Fastow

Jeff Foushee  
 by Christi Zommers  
 Betsy Gates  
 by Sheree and John Shoch  
 by Elizabeth Shoemaker  
 Dick Hare\*  
 by Anne and Lanny McLean  
 Dr. John Hatzenbuehler  
 by Anonymous  
 by Carolyn Wicklund  
 Dr. Derek Ipsen  
 by Madi Kraus  
 Emily Karassik  
 by B. Boyer  
 Dr. Matthew Kopplin  
 by Bob Burkheimer  
 by Gwende and Jim McComas  
 Colman Lay  
 by Madi Kraus  
 Dr. Donald Levin  
 by William S. Bishop  
 Dr. Autumn Loomis  
 by Anonymous  
 Medical-Surgical Unit  
 by Margaret and Bob Houston  
 Tori Morison  
 by Anonymous  
 Dr. Leigh Morse  
 by Elaine and John French  
 by Bob and Betty Stone  
 Betsy Mullins  
 by Courtney and Steven Kapp  
 by Kathie Levison  
 by Wendy\* and Alan Pesky  
 Cynthia Murphy  
 by Catherine Holbrook Newman and Geoffrey John Isles  
 Dr. Terry O'Connor  
 by Julie Ann Wrigley Foundation, Julie Wrigley  
 Lacey Michelle Oneida  
 by Anonymous  
 Dr. Phatama Padavanija  
 by Craven Young and Karen Oswald  
 Dr. Gerardo (Jerry) Perez  
 by Craven Young and Karen Oswald  
 Dr. Matthew Reeck  
 by Gwende and Jim McComas  
 Dr. Rhonda Robbins  
 by Anonymous  
 Dr. Deb Robertson  
 by Sarah and Bill Robertson  
 Carol Scheifele-Holmes and Ben Holmes  
 by Marybeth Flower  
 Megan Smith  
 by Anonymous



St. Luke's Wood River Medical  
Center Staff  
by Anonymous  
by Joanne I. Davis  
by Ann and Dr. Mark Hansen  
by Linda H. Jensen  
by Wolfgang Kuhn  
Megan Tanous and St. Luke's Wood River  
Foundation Staff  
by Johni Hays  
Carol Wade  
by Kiki and Wayne Martin

Lisa Wild  
by Maggie and David Sturdevant  
Buddy Wilton and Shay Doll  
by Anonymous  
by The Lipman Family  
Tiffany Wohlwend  
by Suzanne and Jack Finney  
Katherine Woods and Richard Paris  
by Anonymous  
by Liza Weekes  
Wound Clinic  
by Peggy Hicks

*St. Luke's Wood River Foundation  
strives to provide accurate  
recognition of our donors. If you feel  
there has been an error or omission,  
please contact the Foundation office  
at 208-727-8447.*

*\*In memoriam*



Lynn Wade, RN, with a nursing student.

## Foundation Supports Education for Staff and Health Care Students

In 2022, St. Luke's Wood River Foundation offered over \$57,000 in educational support to health care students attending the College of Southern Idaho as well as specialty training for St. Luke's Wood River staff. Clinical staff gained expertise in areas such as pediatric emergency medicine, Parkinson's therapies, women's health, healing touch treatment and medical imaging.

## PLANNED GIFTS

Anonymous  
Peggy and John Baker  
Sandra Bosley  
Barbara Boswell  
Myrle and Buzz Bradshaw\*  
Susan and Frank Countner  
DeBard Johnson Foundation, Janet and Roger DeBard  
Joan Donaldson, Robb Mickelson and Bob Mickelson\*  
Peggy and Sigi Engl\*  
Ted and Linda Fouts  
Dayle Fowler\*  
Gay and Bill Fruehling  
Hilary Furlong  
Mark and Betsy Gates  
Debbie and Greg Hastings  
Johni Hays

Dr. Harry Huffaker  
The Jaclyn and Sydney Rosenberg Foundation by Nancy and Brad Rosenberg  
Judith A. Jellinek  
The Johnson Family Fund of the Ayco Charitable Foundation  
Susie King  
Kathie Levison  
Ruth Liedler\*  
David H. Lindow  
Jim Lindstrom  
Camille McCray\*  
Wilson D. McElhinny  
P. Scott McLean Jr., MD  
Ruth and Roger Miller\*  
James O. Moore, Jr.\*  
Donald A. Morrison  
Cynthia and Kingsley Murphy  
Kim Nalen

Lynne and Bob Nicholson\*  
Adrian and Bill\* Norris  
Susan Carter Orb  
Margo Peck  
Christine Peterson  
Joy and Jack Prudek  
Martha\* and Travis Reed  
Beth Annable Riall  
Mary Rolland  
Mary Santosuosso  
Carol Scheifele-Holmes and Benjamin Holmes  
Keith Sivertson, MD  
Renee and Jim Strang  
Charles Stuhlberg  
Megan and Adam Tanous  
Rolande and James\* Vaughn  
Shay Doll and Buddy Wilton  
Delores and William Winslow\*

# A Lasting Legacy

St. Luke's Wood River Foundation is grateful to have received a generous bequest gift from Ruth and Roger Miller this past year that will improve health and well-being in the community for years to come.

Upon their decision to make an estate gift, Roger said, "We feel a responsibility to give back wherever we can and have an invested interest

in improving the quality of infusion services. We are happy to give back to such a remarkable hospital with such remarkable people."

True to their lives of giving, Roger and Ruth's generosity continued after their passing. The gift from their estate will help ensure clinical excellence and empower health for all in the Wood River Valley.



Ruth and Roger Miller\*

## Legacy Giving

As you plan for your future, you make several important decisions. One of those carefully planned choices may be to create a lasting impact through a legacy gift. Legacy giving is a meaningful way to make a difference that will endure beyond your lifetime, impacting the lives of generations to come.

If your estate plans include a gift to St. Luke's Wood River Foundation, please let us know. We want to thank you for your generosity, honor your wishes and invite you to join our Legacy Society.



# Endowment Funds

Endowed funds held by St. Luke's Wood River Foundation provide current and long-term support for capital equipment, programs and services. The principal of each endowed fund is invested in accordance with the Foundation's investment policy; earnings are spent in consultation with each fund's donors and at the discretion of the board of directors.

We are grateful to the following visionary individuals and foundations who have established endowed funds through St. Luke's Wood River Foundation, which will provide financial security for the medical center well into the future.

## ENDOWED FUNDS OF \$1,000,000 OR MORE

### Emergency Services Endowment Fund

Emergency services are our community's highest health care priority. The hospital's emergency response network coordinates care from a patient's initial 911 call through arrival at the hospital. Board-certified emergency physicians and highly trained nurses provide the best possible care for patients suffering from heart attacks, strokes or serious injuries.

### Pediatric Services Endowment Fund

In 2018, for the first time in over a decade, the hospital welcomed a full-time pediatrician to the valley. Generous community members established this fund to ensure the long-term sustainability of pediatric services.

## ENDOWED FUNDS OF \$500,000 OR MORE

### Engl Family Endowment Fund

Created in 1973 by the Peggy Emery Engl Descendants' Trust, this was the Foundation's first endowed fund. Annual distributions, made in consultation with members of the Engl Family, support the hospital's priority needs.

### P. Scott McLean, Jr., MD, Endowment Fund for Staff Education

This fund, created by the Boswell Family Foundation in 2005, ensures staff can access training to further their expertise in best practices for patient care. Dr. P. Scott McLean, Jr., advises on the fund.

## ENDOWED FUNDS OF \$100,000 OR MORE

### The Carol and Pat McLaughlin, MD, Endowment Fund for St. Luke's Wood River Employee Medical Expenses

Shay Doll and Buddy Wilton created this fund in 2009 to help hospital employees and their families with copayments for medical expenses.

### Carol Shephard Nursing Scholarship Fund

Carol Shephard established this endowment to fund the educations of aspiring nurses, particularly those who intend to work at St. Luke's Wood River. It supports new nurses' educational goals and high-quality care.

### The Deer Creek Fund

This fund, established and advised by Lynn Campion-Waddell, Tom Campion, Ashley Campion and Berit Campion, provides ongoing support for the hospital's priority needs, especially emergency medical services.

### Physician Innovation Endowment

This fund gives patients a way to say thank you as well as supports physicians' investments in patient care. The hospital's physicians, through the medical executive committee, decide how to utilize the fund.

### Recognition Endowment Fund

This fund was established to express gratitude for health care workers. It has funded recognition events to honor our employees and is a valuable tool in efforts to retain clinical staff.

## ENDOWED FUNDS OF \$25,000 OR MORE

### Carl A. Gray Memorial Award Fund

Established in 1991 by Harvey Gray, Carl Gray's son, this fund honors the memory of an avid Sun Valley Ski Club member while celebrating excellence in nursing care.

### Women's Imaging Center Endowment

This fund was established to support the state-of-the-art Women's Imaging Center, which was fully funded by generous community philanthropy in 2009.

## Mission:

To inspire generosity that improves health and well-being in the community.

## Vision:

We envision a community where generosity ensures clinical excellence and empowers health for all.

Your generosity impacts lives.  
Makes a difference. Heals.



PO Box 7005  
Ketchum, Idaho 83340  
wrfriends@slhs.org  
[slwrf.org](http://slwrf.org)