



Generosity Heals

Your generosity impacts lives.
Makes a difference. Heals.

2021 DONOR IMPACT REPORT

Your Gifts in Action

Each and every investment in St. Luke's Wood River Foundation enhances the health of the community you know and love. Your generosity makes a true and measurable difference in the lives of others.

Nearly
\$1 million

Invested in clinical priorities stemming from the COVID-19 pandemic.



19

Patient rooms upgraded with telehealth technology.



\$1 million

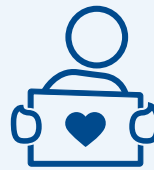


Invested in the new Family Health Services Clinic in Bellevue, which provides access to comprehensive health care services to every member of our community.



12

New homes under construction for health care workers.



\$50,000+

In grants to help St. Luke's Wood River employees in need of financial assistance.

24

Scholarships awarded to educate clinical staff and students pursuing health care careers.



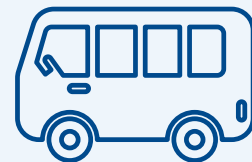
10,000

Meals provided to feed frontline staff.



1st

Mountain Rides non-emergency medical bus service for patients traveling between the Wood River Valley and Twin Falls for treatment.



9

Community health grants to empower health for all.



201

Patients assisted with health-related necessities through the Compassionate Care Program.



St. Luke's Wood River Foundation

BOARD OF DIRECTORS

Officers

- Megan Edwards, President
- Roger DeBard, Treasurer
- Matt Kopplin, MD, Secretary

Directors

- Delvin Ash
- McNair Bailey
- Barbara Boswell
- Jeff Foushee
- Sheila Fryberger
- Betsy Gates
- Roger Gould
- Becky Lopez
- John Monson
- Cynthia Murphy
- Bob Reniers
- Deb Robertson, MD
- Bob Robideaux
- Jeff Smith, St. Luke's Wood River Board of Directors
- Pete Smith
- Megan Tanous, Chief Development Officer
- Jon Thorson, MD
- E. Carlton "Buddy" Wilton

Emeritus Council

- Judy Atkinson
- Lynn Campion-Waddell
- Nancy Cord
- Michael Engl
- Wayne Griffin
- Geri Herbert
- Ben Holmes
- Wilson McElhinny
- Bud Purdy*
- Martha Reed*
- Shirley Renick*
- Gordon Russell
- Will Storey*

**In memoriam*

Dear Friends,

Thank you. Despite the challenges of the COVID-19 pandemic, you made it possible to navigate extremely difficult times and courageously invest in the future.

As the Wood River community rose to meet one of the greatest medical challenges of our lifetimes, your gifts provided strength and inspiration. Through your generosity, St. Luke's Wood River Foundation made great strides towards our vision of ensuring clinical excellence and enabling a life of health for each and every member of our community.

This past year, your generosity made it possible to open Family Health Services, a new community clinic in Bellevue. The clinic will expand access to preventive care for those in need. Your partnership also made it possible to begin construction on 12 new homes for health care workers. This investment will help retain and recruit critical health care workers and thereby help to ensure high-quality health care services for years to come.

You also supported our health care team, brought the latest telehealth technology to patients and families, assisted patients in need and advanced the work of community health partners. None of this would have happened without you.

In the pages that follow, we invite you to read about the difference you made.

As we reflect on this past year, we thank you for your partnership. Your kindness and generosity brought hope, healing and inspiration to our community.

With gratitude,



Megan Dawson Edwards
St. Luke's Wood River Foundation
President



Megan Tanous
St. Luke's Wood River Foundation
Chief Development Officer

Grateful for You

Your generosity enabled us to respond quickly and effectively to the pandemic, support St. Luke's Wood River staff as they ensured clinical excellence and empower health for all.

“As a nurse, the care and needs of my patients are my top priority. Working 12-hour shifts as a bedside nurse, there is little time to be concerned with my personal needs. For the first time this year, I've had the opportunity to take precious moments to decompress, relax and regenerate during a demanding shift in the new Resiliency Room. Fifteen minutes of relaxation in the massage chair has a major impact on me and my nursing colleagues. Thank you.”

Lynne Wade, RN



“The support of the Foundation is an amazing gift to my community of health care workers. This year, my dad had a traumatic brain injury and my family had to maintain multiple households while traveling to and from Boise to care for my dad. If it hadn't been for the amazing generosity of our community and colleagues to the employee assistance funds, we would have struggled to pay the mortgage and other bills. There is so much generosity provided by the community, whether it is a meal, ChapStick®, hand sanitizer, a warm vest or just a friendly voice to talk to. I am blessed by this generosity but most importantly knowing that people genuinely care.”

Janell Porter
Patient Access Specialist

“Thank you so much to community generosity for making the beautiful new furniture in the mother/baby unit possible. This new furniture keeps our families safe and comfortable during their stay with us. It also contributes to a homey feel in our rooms and allows our families to really settle in and take in the experience.”

Natalie Piteo, RN



“Improving patient care and expanding services is so very important. I am beyond grateful to the Foundation for their support while I went back to school to obtain an advanced degree in imaging to provide local nuclear medicine services in hopes to expand services in the near future.”

Debbie Bothwell
Nuclear Medical Technology Specialist
P. Scott McLean, Jr., MD, Endowment for Staff Education Grant Recipient



“I am humbled and extremely proud of the work of the St. Luke’s Wood River team and grateful for our community’s incredible support. When health care providers and community members work together, the power of the partnership means better care for our patients.”

Almita Nunnelee
*St. Luke’s Wood River Chief Operating Officer/
Chief Nursing Officer*

“Caring for each other is more important now than ever. Thank you to the Foundation and the community for their continued support of St. Luke’s Healing Touch program and trainings. It is truly a gift that keeps giving. Nurses, staff and community members who are trained in Healing Touch share this gift with our patients, family and friends, as well as providing much needed self-care.”

Mary Kay Foley
Healing Touch team member



Leading by Example in the Wood River Valley

Guided by a strong moral compass and an innate sense of civic responsibility, Julie Wrigley courageously tackles local and global challenges with vision, integrity and gusto. Julie leads by example. As president and CEO of Wrigley Investments and the co-founder of Arizona State University's Global Institute of Sustainability—now tied into Global Future Laboratory at ASU where she is co-chair—she connects resources and partners to develop cutting-edge solutions that improve life on earth for all.

"I'm not an activist, but I know morally when it's the right time to act," Julie explained, who credits her social and environmental altruism to the values instilled in her as a child. "The Julie A. Wrigley Foundation is committed to three things: the environment, health care and education." Focusing on initiatives in the regions where she resides, Julie tirelessly walks the talk, supporting causes that forge healthier, happier and more sustainable communities.

In the Wood River Valley, Julie has played a key role in the development of some of St. Luke's Wood River's innovative health services. Her support began with the New Hospital Campaign in 1997, which launched the St. Luke's Wood River Medical Center we know today. Julie's generosity is evident in many of the hospital's current extraordinary services, including the Women's Imaging Center, the Infusion Center and additional top-quality imaging technology. The initiatives to fund this technology have been instrumental in saving lives—providing a level of health care that is rarely found in small communities.

The Women's Imaging Center, which was fully funded through community philanthropy, has performed 38,000 lifesaving digital mammograms since it opened in 2009. More recently, St. Luke's Wood River Foundation invested in 3-D mammography technology to better detect abnormalities in breast tissue and also raised funds for breast MRI technology to improve patient outcomes.


"The health care in this valley is outstanding," Julie said. "We have access to big city health care right here in Blaine County, and we're ahead of the curve for supporting women's health," which is a feat that is important to Julie.

Julie is no stranger to the power of uplifting women. After her husband, William Wrigley, passed away in 1999, she moved to Sun Valley and found solace and strength in her community of female friends. "There was a great mentorship of women friends in this valley who served as an informal support network," she said. Her new home was a natural fit as Julie had been visiting Sun Valley since the early 1950s to ski with her parents. From a young age, she loved the valley's beauty and connection to Mother Nature. Even as a child, she was closely attuned to her surroundings and curious as to the why of what she saw. When she noticed environmental degradation around her, she paid attention.

"I was born with a quirky brain that cared about nature. I was lucky enough to live next to the ocean in Southern California, and I noticed at an early age that the abalone that lived on the rocks along the coast were disappearing. What child cares about a bunch of abalones?" Julie said.

It is Julie's ability to see the details and interconnectedness of environmental, economic and social systems that make her so effective at developing inclusive solutions with real impact. "Our issues are all interrelated," she explained, "and we have to actively develop solutions to ensure sustainable futures for all." Julie believes the pandemic proved that we are deeply intertwined. Borders and imagined walls "do not stop the spread of diseases, social issues or climate change," she said.

Julie urges us to be engaged world citizens and to seize the opportunities in front of us. For example, Julie recognized the need to support the St. Luke's Wood River staff during the COVID-19 pandemic, so she pivoted her giving to the Foundation's Circle



“The health care in this valley is outstanding. We have access to big city health care right here in Blaine County, and we’re ahead of the curve for supporting women’s health.”

Julie Wrigley

of Friends program, which provides support to staff facing unexpected financial hardships. “The hospital and the staff have been amazing. They are the reason we have such an incredible hospital and community,” she said.

Julie believes it is time for each of us to open our hearts to others by engaging in our communities. “I

invite everyone of all ages to pick one day a month to think beyond themselves and to do something kind for someone else,” she said. She encourages everyone who has the time and skills—as well as the personal attributes to create a positive ripple in the world—to exemplify “giving back” and show kindness to all.

Generosity Makes Innovative Technology a Reality

Walk into any of St. Luke's Wood River's 19 inpatient hospital rooms and you will now find virtual care, also known as telehealth, capabilities in every room. Thanks to community generosity, this state-of-the-art technology allows patients to receive top-quality health care and services usually only available in metropolitan areas.

"We are so fortunate to have telehealth available in all inpatient medical rooms. It provides additional support to ensure patients have access to immediate care and strengthens collaboration within the St. Luke's system," said Katie Schneider, MD, a hospitalist at St. Luke's Wood River, which means Schneider is responsible for providing care to patients during their stay at the hospital.

With the installation of telehealth technology, patients can immediately connect with nurses, doctors and specialists in the St. Luke's system and beyond, regardless of geography; physicians can use the telehealth technology to consult with colleagues face-to-face; and if a patient needs assistance when a nurse is actively caring for a patient in another room, another nurse can jump on the screen to support the patient seeking assistance.

"It's been a privilege to see innovative technology, coupled with the incredible dedication of our Wood River team, strengthen the care available to our community," said Dr. Schneider.

Telehealth capacity within U.S. hospitals is limited. St. Luke's Wood River counts itself lucky to have this additional support on hand. In the last year, Wood River and St. Luke's Nampa were the first hospitals in Idaho to provide comprehensive online services, allowing patients and staff access to virtual care and other resources when needed. Other hospitals are now following suit. The St. Luke's Virtual Care Center, a facility with 35,000 square feet, opened in downtown Boise in August 2018. It is one of just a few in the nation.

With two-way cameras and remote monitoring equipment, including a tool that can zoom in to review patients' vital signs, the technology allows doctors and nurses to diagnose and treat patients, support onsite caregivers, order tests as needed, read results and provide immediate evaluations for patients in Ketchum and elsewhere. Since March 2020, St. Luke's Virtual Care Center has conducted over 200,000 clinic visits via telehealth technology.

The challenges presented by the COVID-19 pandemic to health care providers (particularly the lack of enough inpatient beds, practitioners and staff to care for patients) prompted St. Luke's Wood River Foundation to make telehealth a reality. "We are grateful for the incredible generosity from our donors who understood the positive impact telehealth would have on the health and well-being of the community," said Megan Edwards, president of St. Luke's Wood River Foundation.

St. Luke's Wood River Foundation is committed to achieving excellence in health care for Blaine County by advancing innovative programs and services. It was instrumental in rallying community support to realize the dream of comprehensive telehealth resources.

The telehealth technology has been a success. Its benefits include supporting high-quality, personalized care at a reduced cost; improving access to timely care; keeping patients in the community; supporting the bedside team in their demanding roles; strengthening team-based models of care; supporting expanded nurse-to-patient ratios and providing much-needed staff agility.

"Telehealth is a welcome addition to patient care," says Dr. Schneider. "I am so proud of my team and the culture within St. Luke's Wood River where everyone is willing to jump in to go above and beyond to make sure patients are well cared for, medically and otherwise."



“It’s been a privilege to see innovative technology, coupled with the incredible dedication of our Wood River team, strengthen the care available to our community.”

Katie Schneider, MD

Carol Shephard's Vision Supports Aspiring Nurses

Before her passing in December 2021, Carol Shephard partnered with St. Luke's Wood River Foundation to create the Carol Shephard Nursing Scholarship Fund, a new endowment to support the education of aspiring nurses, particularly those who intend to work at St. Luke's Wood River. "For people who are interested in serving others, nursing is the best profession I can imagine," Carol said during her conversations with the Foundation.

The fund is unique in Blaine County and will enable future generations of nurses to pursue their educational goals as well as support high-quality care in the Wood River Valley.

As she approached the end of life, Carol graciously took time to explain her vision and generosity in creating the fund. "I have a limited time left on earth, and I want to leave a meaningful contribution that supports those who are pursuing the nursing profession for the first time." Carol's big heart and extraordinary generosity is a gift to us all. This endowment will invest in talented individuals who are called to serve our community with open hearts and hands.

Carol was inspired to create the nursing endowment fund after reading about a nurse honored by the Carl A. Gray Memorial Award Fund through St. Luke's Wood River Foundation. Each year, the Gray award celebrates the remarkable dedication of a local nurse, while honoring the memory of an avid Sun Valley Ski Club member. Inspired by the story, Carol contacted Megan Tanous, chief development officer of the Foundation, to discuss making her own dream a reality. Interest quickly spread and many of her friends and family honored Carol by contributing and helping to grow the fund.

Nursing was always Carol's priority. A nurse for 45 years, Carol often reflected on the rewards of the profession. "I have done a lot of things in my life, and, in my opinion, nursing is one of the most gratifying and rewarding careers," she said. Carol believed in the importance of promoting the profession because of the essential role nurses play in maintaining a community's well-being as well as the personal fulfillment that comes from serving others.

Carol was three years old when she first dreamed of becoming a nurse. She stayed true to her early calling and pursued nursing in college, during which time she also joined the Navy, which paid for her last year of nursing school. She served as a nurse in the Navy for three years in San Diego, California, before working at several hospitals during her career, including what was then the Blaine County Medical Center in Hailey in the 1980s. Along the way, Carol also earned her law degree and pilot's license.

Carol moved away from Idaho for 19 years, then returned to her home in Hailey after she retired in 2017. She would later serve as the president of St. Luke's Wood River Volunteer Core Board and served on both St. Luke's Wood River Foundation Board and Community Board. "I have had an amazing life," Carol said, "and when I think of one of my greatest accomplishments, it is this scholarship fund. I am very excited and proud of it. I'm grateful that I have the means to help a number of people."

Carol exemplified the spirit of generosity and compassion that is central to St. Luke's Wood River Foundation's mission. She committed to promoting excellence in health care in our community by investing in nurses who, in turn, will help ensure the sustainability of St. Luke's Wood River's services for decades to come.

“ I have had an amazing life, and when I think of one of my greatest accomplishments, it is this scholarship fund. I’m grateful that I have the means to help a number of people. ”

Carol Shephard



Connection and Community Support Matters

St. Luke's Wood River's staff is exceptional. While organizations generally can claim a handful of stand-out employees, St. Luke's Wood River is teeming with hard-working, highly skilled, compassionate and extraordinary staff members who support and inspire one another.

Time and time again, employees express how grateful they are to work with colleagues deeply committed to excellence and patient care.

Julie Lyons, MD, family physician and vice chief of staff, and her husband, Blair Choate, RN, BSN, lead clinical educator, are pillars of St. Luke's Wood River's all-star staff. Each has worked there for 14 years, devoting their hearts and expertise to improving well-being in Blaine County. After meeting at the hospital during the first year of their second careers, Julie and Blair tied the knot, then committed to supporting St. Luke's Wood River and staying in the valley to raise a family.

While they approached their work in health care from different paths, they agree that the opportunity to care for people inspired them to pursue medical careers. Before joining St. Luke's Wood River, Dr. Lyons was a middle school science teacher. She especially loved teaching health as part of her job and realized that medicine was her passion. "I'm a fourth-generation doctor," she said, "so I also had a lot of role models."

From a young age, Blair pursued jobs that required medical expertise. Blair was a professional lifeguard for the city of Santa Barbara throughout college and for several years after. Later, he ran adventure tours in Idaho and joined the Wood River Fire and Rescue Department. His mom, also a nurse, offered him a glimpse into the nursing profession that he found interesting. "I knew that nursing was something I wouldn't get bored of, and I loved spending time with patients, so it was a perfect fit," Blair said.

To this day, their passion for patient care sustains and inspires them, even after working many grueling, 80-hour weeks during the COVID-19 pandemic. "What I enjoy most about my work is the patient relationship," Dr. Lyons explained. "After 14 years in family medicine, I have been able to care for four to five generations of family members. It's a beautiful opportunity to understand where someone comes from and how to best support them."

Blair echoes this sentiment, reiterating how the teamwork among nurses is amazing and how caring for patients is fulfilling. "For most patients, being at the hospital is one of the scariest times. I love putting the patients at ease, reminding them that they are safe, well cared for and will be supported when they go home," he said. These small yet profound acts of tenderness and compassion are what make St. Luke's Wood River special.

This attention to detail and commitment to excellence is also an extraordinary characteristic of St. Luke's Wood River Foundation's donors. "The Foundation is amazing at working with doctors to help identify additional resources we need," said Dr. Lyons. "They helped me secure a vision scanner for [three- to five-year-old children] who have vision deficits and a point-of-care ultrasound that allows us to do bedside assessments inside and outside the hospital. These seemingly little things make a big difference."

Whether it's new patient chairs or beds, meals for the staff during the COVID-19 pandemic, professional development and education for staff, resuscitation beds for babies or important renovations, St. Luke's Wood River Foundation delivers. Always thinking a step ahead, St. Luke's Wood River Foundation makes sure the hospital receives the necessary support and resources to deliver excellent patient care. This is all thanks to overwhelming community generosity. Along with St. Luke's Wood River staff, our community donors are the backbone of a healthy Blaine County.

“St. Luke’s Wood River Foundation is amazing at working with doctors to help identify additional resources we need.”

Julie Lyons, MD



Expanding Care for All

Despite the extreme challenges of the COVID-19 pandemic, St. Luke's Wood River Foundation moved forward this past year to expand care in the Wood River Valley, knowing that courage and trust was needed to continue to support health care excellence and improve access.

"We knew we wanted to help increase access to care," said longtime Foundation board member Pete Smith. The Foundation recognized that expansion needed to remain a priority.

While the Wood River Valley is known for its excellent health care, its most vulnerable community members in need were not accessing preventative care. St. Luke's Wood River Community and Foundation boards recognized the critical need to expand care for those without insurance, so committed to help bring Family Health Services, a federally qualified health center and non-profit, to the valley.

"I believe this is one of the most impactful efforts that St. Luke's Wood River Foundation and the hospital have undertaken," said Megan Tanous, St. Luke's Wood River Foundation's chief development officer.

A \$1 million grant from St. Luke's Wood River Foundation made it possible to renovate and equip the new clinic in Bellevue. Others stepped forward to help. Paul Conrad of Conrad Construction committed to remodeling the space, despite the high demand for construction, and many local physicians also volunteered their time.

In January 2022, Family Health Services opened its doors, offering medical, dental, behavioral health, mental health and pharmacy services to care for the uninsured and under-insured in Blaine County.

"We are grateful to the many people who have helped put St. Luke's Wood River Foundation in the position of strength from which it could invest in a solution that will help so many families," said Foundation Board President Megan Dawson Edwards.

Family Health Services is one of 15 federally qualified non-profit health care providers in Idaho, with 2,000 clinics across the country. Staffed with two full-time nurse practitioners, a full-time dentist, a dental hygienist, a pharmacist and bilingual staff support, Family Health Services serves people of all ages, including patients who use Medicare and Medicaid.

The community clinic is structured to serve patients who may not otherwise seek care due to financial reasons. This is key in a community like Blaine County, which has one of the most extreme wealth gaps in the country. Last year, over 1,500 Blaine County residents traveled many miles to Family Health Services clinics in Jerome and Fairfield for care, leaving no question about the demand for this service in the Wood River Valley. Unfortunately, while Family Health Services tried for years to open a clinic in Blaine County, it was never able to secure government grants because of the county's high median income and positive health statistics.

"The support from St. Luke's Wood River Foundation, St. Luke's Wood River and the community made it possible to open Family Health Services in the Wood River Valley. We are thrilled to offer excellent health care to folks who might be choosing between paying rent or going to the doctor," said Aaron Houston, CEO of Family Health Services.

Generous donors echoed this sentiment. "Everyone deserves good health care," said Holley duPont, a St. Luke's Wood River Foundation donor and project supporter, noting that it's important to support those who don't have the resources to readily access it.

The launch of Family Health Services is a testament to the strength of community generosity in the Wood River Valley as well as the community's commitment to fostering a healthier region for decades to come.



Megan Dawson Edwards, Foundation board president; Aaron Houston, Family Health Services CEO; Sally Gillespie, retired Foundation board member; Barbara Boswell, Sheila Fryberger, Delvin Ash and Pete Smith, Foundation board members; and Megan Tanous, the Foundation's chief development officer and a board member, celebrate the opening of the new Family Health Services Clinic in Bellevue.

“We are grateful to the many people who have helped put St. Luke’s Wood River Foundation in the position of strength from which it could invest in a solution that will help so many families.”

Megan Dawson Edwards, St. Luke’s Wood River Foundation board president

Financial Health

Thanks to the steadfast generosity of our donors, the financial health of St. Luke’s Wood River Foundation is strong. Nearly \$3 million in philanthropic revenues were generously given during the 2021 fiscal year, with funds invested in COVID-19 testing strategies, new technologies, staff support, clinical education, health care scholarships, patient assistance and community health partnerships. This year, we also committed to securing our Wood River Valley health care workforce by funding the construction of 12 new homes for hospital staff.

The Foundation continues to preserve and enhance capital through prudent management of our investment portfolio. Today, due to steadfast community generosity, the Foundation has more than \$35 million in assets that will advance the health of our community for years to come.

St. Luke’s Wood River Foundation Statement of Assets and Net Assets

Cash Basis as of September 30, 2021

Fiscal Year 2021

Assets

Cash	\$ 249,315
Investments, at Market	\$ 34,786,603

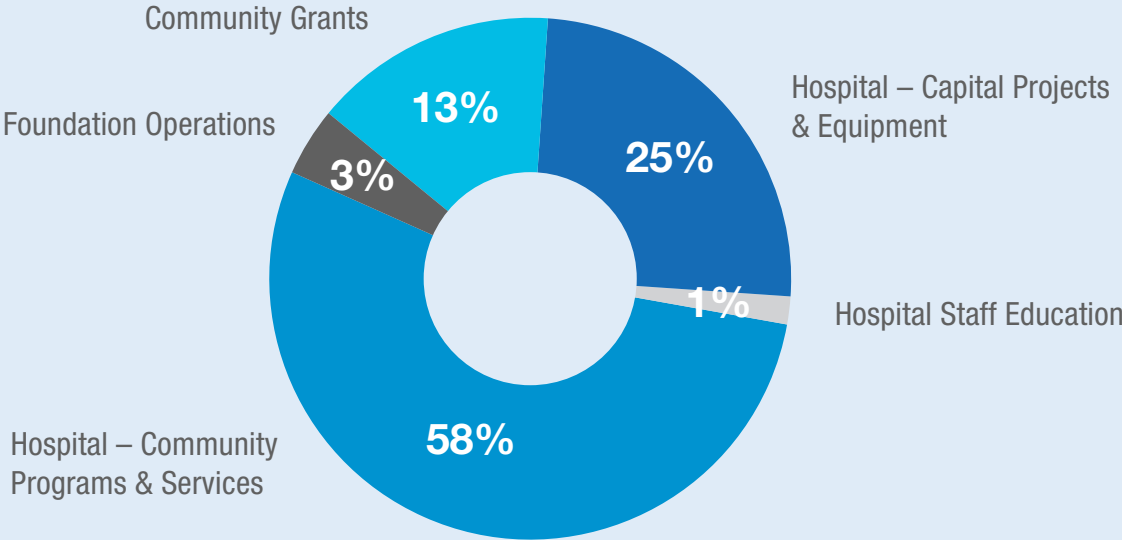
Total Assets **\$35,035,918**

Net Assets

Unrestricted	
<i>General</i>	\$ 22,450,009
<i>Board-Designated Endowments</i>	\$ 3,466,334
Permanently Restricted	\$ 9,119,575

Total Net Assets **\$ 35,035,918**

Gifts Distributed



In Appreciation

2021 Donors

St. Luke's Wood River Foundation gratefully acknowledges the following individuals, foundations and corporations who made generous contributions January 1 through December 31, 2021. Thank you for partnering with us in our mission to inspire generosity that improves health and well-being in the community.

GIFTS OF \$250,000 AND GREATER

Camille McCray*

GIFTS OF \$100,000-\$249,999

Shay Doll and Buddy Wilton

Kemmerer Family Foundation,
Peter and Betty Gray

The Allan Pinkerton Family

GIFTS OF \$50,000-\$99,999

Anonymous (2)

Wendy and Jim Drasdo

Wayne Griffin, Jr.

Marmot Foundation,
Miren and Willis du Pont

Sharon McLain and Donald Dunbar

The Ambrose Monell Foundation

Sam & Peggy Grossman Family Foundation,
Peggy and Sam Grossman
Ginna and John Grossman

Carol Shephard*

The Miliias Foundation,
Margot and Mitch Miliias
Anne and Sean Ryan

GIFTS OF \$25,000-\$49,999

Anonymous (2)

Barbara Boswell and Harold Robinson

Robert Colman

The Martine and Dan Drackett Family
Foundation

Elizabeth McGraw Webster & Maricich-Paen
Family Foundation

Sirius Fund

Mr. and Mrs. N. Peter Hamilton

Patty Duetting and Dick Hare

Heinz Family Foundation,
Teresa Heinz-Kerry and John Kerry

Pete and Bonnie* Kremer

Marshall Carroll Charitable Fund

Gwende and Jim McComas

The Nelles Foundation,
Gail and Duane Nelles

Val A. Browning Charitable Foundation

The Ward Family

Catherine and Tracy Wolstencroft

Julie Ann Wrigley Foundation,
Julie Wrigley

GIFTS OF \$10,000-\$24,999

Anonymous (2)

Laurie and Paul Ahern

Craig and Pam Bailey

Baker Family Fund at Spur Community
Foundation

Blank Family Foundation,
Jerry Blank

Nancy and Doug Bradshaw

Bob and Penny Brennan

Mary and George Broadbent

Brown-Monson Foundation,
Susan and John Monson

Kingsley and John Croul

Cathie and Hanley Dawson

Draper Family Foundation

Don and Ellen Easterbrook

Jana and Jeff Foushée

Gardner Grout Foundation

Mark and Betsy Gates

George and June Block Family
Foundation, Mathew Vanderkloot and
Barbara Block-Vanderkloot

Gordon Ross Medical Foundation,
Mary and Stephen Malkmus
Tori Pinkerton

The Hamilton Family Foundation,
Mr. and Mrs. N. Peter Hamilton

Vivian and Brian Henderson

Martha and Ross Jennings

Courtney and Steven Kapp

Bill and Jeanne Landreth

Alison and Jim Luckman

The Sue & Bob McCollum Family
Foundation,
Sue and Bob McCollum

McCrea Foundation,
Cheryl and John Welsh III

Wilson D. McElhinny

Cynthia and Kingsley Murphy

Nancy Eccles and Homer M. Hayward
Family Foundation,
Walter Eisank and Hope Hayward

Cynthia and Randolph Nelson

Lynne and Bob Nicholson*

The Ochsman Foundation,
Esther and Michael Ochsman

Vickie and Edward O'Gara

Joan and Mike O'Neil

The Palmedo Spur Fund at Spur
Community Foundation

Tom Perakos

James and Tedde Reid

Betsy and Bob Reniers

The Rogers Foundation

Robertson Foundation

Sandy and Jodi Sanders

Laurie and Norman Schultz

Linda B. Segre

Diane and Tom Smith

Richard Smooke and Family

Walter and Janet Teagle

The AC Houston Lumber Co.

The Otis Booth Foundation,
Stephanie and Steve Shafran

The William Chinnick Charitable
Foundation, Nancy and William
Swaney

Workday Foundation,
Carol and Greg Lindstrom

Barbara and Stanley Zax

GIFTS OF \$5,000-\$9,999

A.M. Dachs Foundation,
Alan Dachs

The Albert Parvin Foundation

Jan Aronson and Dominique Finas

Delvin and Joe Ash

Sara and William Barrett

Mari and David Clack

Mary and Michael Colhoun

The Carlos A. Cordeiro Foundation

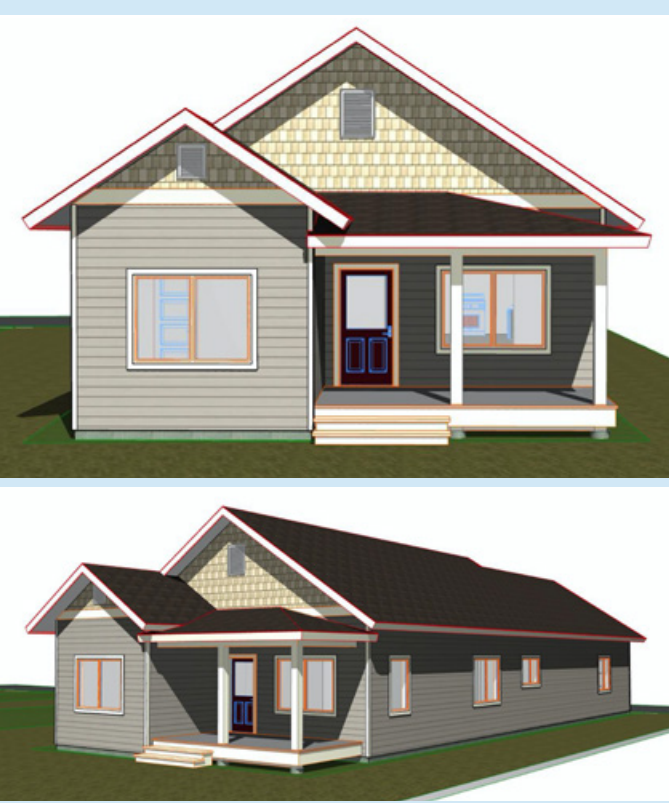
Missy and Tipp Cullen
 Peter and Quin Curran
 Patricia and Gary Darman
 Elizabeth and Mark De Reus
 DeBard Johnson Foundation,
 Janet and Roger DeBard
 Marguerite and Talton Embry
 Susan Flynt
 Dr. Monica Lopez and Sameer Gandhi
 The Great Day Fund,
 Jennifer and Jim Milgard
 Shirley and Harry Hagey
 Geri Herbert
 Peggy Hicks
 Margaret and Bob Houston
 Cynthia and Blair Hull
 George and Leslie Hume
 The James J. Colt Foundation,
 Robert Rand
 Susie and Rich Johnson
 Ray and Louise Knowles
 Alice Lane
 Laural Foundation,
 Lauren Dachs
 Mr. Nils C. Lind
 James E. Lindstrom

Aphrodite and Anastase Livieratos
 Ann Morris
 Donna Jean Morse
 Janet Nathanail and William Flanz
 Sally and William Neukom
 Sheron and Roger O'Connell
 Wendy and Alan Pesky
 Perlstein Foundation,
 Jan Phillipsborn
 Michelle Dumke Praggastis and
 Thomas Praggastis
 Rhonda Robbins and Robert Bykerk
 Sarah and Bill Robertson
 Bob and Beth Rohe
 Peggy and Paul Street
 Sun Valley Company & Rally for the
 Valley
 The Teagle Foundation Incorporated,
 Walter and Janet Teagle
 Elizabeth C. and Thomas T. Tierney
 Joan and John Valaas
 Nancy Crandall and Stephen Wall
 Van Watkins
 David and Trish Wilson
 Judy and Alex Woodard

Karen Oswalt and Craven Young
 Bob and Patience Ziebarth

GIFTS OF \$2,500-\$4,999

Anonymous (4)
 John Bailey
 McNair and Will Bailey
 Amanda Black
 Kathleen and Hugh Blue
 Lisa and Perry Boyle
 Pete and Nancy Buck
 Nina Carroll
 Katrina and Chris* Cord
 Cherie and Steve Crowe
 Bobbie and Art Dahl Fund in the
 Idaho Community Foundation
 Jim and Wendy Daverman
 Judith Warde Davis Foundation
 Mary DeWitt Wilson Family Fund at
 Spur Community Foundation
 Mr. and Mrs. James W. DeYoung
 Dee Pritchard and Richard Dick
 Stacey and Lance Doby
 Carey and John Dondero
 Ann and Mark Edlen



New housing for St. Luke's Wood River employees will help ensure high-quality health care.

Generosity Launches Housing Efforts

St. Luke's Wood River Foundation, St. Luke's Wood River Medical Center and ARCH Community Housing Trust came together this past year in a collaboration to develop 12 new homes for hospital employees.

Construction began in fall 2021 on four three-bedroom single family homes at Quigley Farms in Hailey for St. Luke's Wood River employees; these first four will be available in fall 2022. Construction is underway on the remaining eight units, located in Hailey and Bellevue.

"The limited availability of housing to rent or own is a challenge felt by our entire community and significantly impacts our ability to recruit and retain critical health care workers," said Erin Pfaeffle, director of community engagement at St. Luke's Wood River. The homes will be long-term rentals for St. Luke's employees, clinical and non-clinical. The leases will stipulate that continued employment is a condition of housing.

The Foundation and its partners also recognized that an investment in affordable housing would make a significant difference in health care workers' lives, which in turn would make a difference in the community. Generosity made this possible.

Megan and Chris Edwards	Joy and Jack Prudek	Christensen Family Foundation
Linda and Bob Edwards	Jennifer and Peter Roberts	Tom Christie
Joan Einbender	Deborah Robertson, MD, and Jeff Lamoureux	Jeff, Kathy, Jack and Robert Cilek
Sandy and Jim Figge	Bob and Karen Robideaux, Robideaux Family Fund	Erin and Neil Clark
Cynthia and Edsel Ford	Kim and Chris Roth	Creekside Foundation, Kate and Eric Dachs
Ted and Linda Fouts	Neil Ryan and Phebe Thorne	Gary and Susan Crowe
The Frances Louise Wolfson Family Foundation, Frances L. Wolfson Jeri L. Wolfson	Dr. Roger and Kathy Sanger	Anthony and Judy D'Angelo
Gay and Bill Fruehling	Silver Creek Outfitters, Susie and Terry Ring	Lucy and John Douglas
Ali and Marc Fuller	Bruce D. Smith and Anndel N. Kininmonth Fund at The Chicago Community Foundation	Dr. Amy Drumm
Robert and Kathryn Gardner	Becky and Pete Smith	Anne Edmondson
The Gerlits Family Fund at The Chicago Community Foundation	Julie and Peter Stott	Ben and Robyn Enders
The Gilhuly Family	Christal and Jeff Taylor	Susan A. Engs
Peter and Betty Gray	Lou Ann and Sean Terry	Dr. Cathryn Erickson
Dennis Hanggi	David B. Theobald	Stephanie and Andy Evans
Heart of Gold Fund in the Idaho Community Foundation	Robert and Linda Vallee	James Farley
Carol Scheifele-Holmes and Benjamin Holmes	Jill and Fred Vogel	Timme and Peter Feininger
Marianne and Bob Honey	Warde Foundation, Ann and Tom Warde	Julie Firestone
The Roy A. Hunt Foundation, Jodie and Daniel Hunt	Sarah Wilcox	Marcia and Bob Fosberg
Elinor and Ross Jannotta	Jeri L. Wolfson Foundation, Jeri L. Wolfson	Carol and Paul Fremont-Smith
Judith A. and Frank H.* Jellinek, Jr. Family Fund of the New Hampshire Charitable Foundation	Jane Woolley	Elaine and John French
Sydney and Admiral Jay Johnson	Sally and David Wright	Susan Gaasland
The Johnson Family Fund of the Ayco Charitable Foundation		Barbara and Michael Gettelman
Judy and Leon Jones	GIFTS OF \$1,000-\$2,499	Judy and Ernie Getto
Donald Kress	Anonymous (10)	Stuart and Rivian Glickman
Cookie and Michael Lafferty	Marie Stanislaw and Steve Abel	Peggy Elliott Goldwyn
Lana and David Latchford	Jane A. Acomb	Deidre and Lawrence Gordon
Kathie Levison	Charlotte and Dr. Terry Ahern	Roger and Margaret Gould
Bob Leyse	Renie Alverson	Margaret B. Gray
Marcia and Don Liebich	Lyn and David Anderson	Sue and Dan Guggenheim
Carol and Greg Lindstrom	Don and Judy Atkinson	Barbara and Tod Hamachek
Michael Mars and Terri Campbell	Gwynn and Mitchel August	Debbie and Greg Hastings
John and Cherie Morris	Peter and Ruby Becker	Stephanie and Dr. John Hatzenbuehler
Patricia K. Murphy	Rebecca Follo and Tom Bentley	Happy Hawn
Mary and Matt Murray	Frances and Edward Blair, Jr.	Heritage Bank
The Nalen Foundation, Kim Nalen	Beverly Boas	Bobbie and John Herrell
Carol P. Nie Fund at Spur Community Foundation	Sharon Bockemohle	Dr. Bart Hill
Pasadena Community Foundation, Patsy and William Pinney	Debbie and Spike Booth	Harvey Hinman
Margo Peck	Borman Family	Pamela Irby
William S. and Linda A. Potter	Sandra Bosley	Mr. and Mrs. Tim P. Johnson
	Angela Brady	Kathy and Jerry Kavka
	Bretall Family Fund of the Silicon Valley Community Foundation	Cynthia King Vance
	Amber Busuttill Mullen	Cindy and George Kirk
	Hans Carstensen	Marge and Jeffrey Lewis
	Dan and Micki Chapin	Linderman Family Fund
		Dabney and Dr. Tift Mann
		Dorrie and David Marks
		Kiki and Wayne Martin
		Ed Matthews and Vilma Keri

Barbara and Robert Matthias
David A. McClusky II
Jim and Willa McLaughlin
Alex and Carolyn Mehran
Claudia and Laine Meyer
John Milner and Kim Taylor
Jane and Steve Mitchell
Moos Family
Julie Weston and Gerry Morrison
Susan and Furman Moseley
Ann Jones and Tim Mott
Stephen and Careda Mowry
Becky and Michael Neidorf
Christine and Philip Neuhoff
Adrian Norris
Gail and Dr. Robert O'Donnell
Jane and Tom Oliver
Anita Braker and Dave Olsen
Stephanie and Nicholas Osborne
Maureen and Barrett Ott
Susan Parslow and Dr. Paul Monahan
Suzie and Garry Pearson
Kandis Pedersen-Romero
Stephanie and John Perenchio
Connie Cox and Tony Price
Patty Puz
Michele Randall
Gwen and Dennis Raney
Mark Rice
Pam Sandine
Tom and Jill Schriber
Ann and Irwin Sentilles
Shirley and Ralph Shapiro
Sheree and John Shoch
Sharon Peters and Dr. Keith Sivertson
Vinton and Amelia Sommerville
Tom and Kathy Stevens
Charles Stuhberg
Maggie and David Sturdevant
Karrie Swaner
Roselyne Swig
The Melly Foundation,
Patricia Klahr and Lee S. Melly
The Seattle Foundation,
Jean Enersen and Bruce Carter
Gail S. Thornton
Beth and Mike Toal
Reva and Bill Tooley
Lois B. Ukropina

Diana and Mallory Walker
Ellen and John Wallace
Lisa and Dave Whorton
Kathryn Woods, MD, and
Richard Paris, MD
Anne and Robert Wright
Cheryl and Peter Ziegler

GIFTS OF \$500-\$999

Anonymous (7)
Barbara and Chip Angle
Samuel H. and Mary Jane Armacost
Betsy and John Ashton
Ms. Mary Bachman and
Mr. William Downing
Shannon Shields and Dr. Frank Batcha
Mr. and Mrs. Mark Baumgardner
Rosmarie Bogner
Debbie and Brian Bothwell
Bowles Lawrence Foundation,
Jill and Mark Lawrence
Josh Bowyer
Leisa and Dr. Kenneth Brait
Becky Brown
Charles Carlson
Danielle and Kenton Carruth
Community Foundation of Louisville,
Carolyn and Julian Van Winkle
Leon Condon
Ed and Jan Cummins
Lisa and Bill Dana
Lauren and Richard Davis
The de Peyster Family Fund of the
Community Foundation for Palm Beach
and Martin Counties
Karen and Marc de Saint Phalle
Ceil and Tony Dibuono
Maureen and Jonathan Edwards
Dan S. Fairman, MD
Delores Fery
Jesse Foster
Dr. and Mrs. Charles D. Fraser, Jr.
Sheila and Dates Fryberger
Traci Gaudreau
Sally Gillespie
Ann and Dr. Mark Hansen
Patricia and Alex Higgins
Diana Filkins
Derek Ipsen
Virginia Johnson

Steven and Emily Karassik
Alison Kinsler
Amy and Stephen Kroll
John Lane
Karin Lindholm
Alysia May and Mikie Geron
Murray McClain
Marge and Nate McGrew
Terry McNearney
Jeff and Nancy Mihalic
Dr. Leigh Morse
Robert Mueller
Elizabeth Mullins
Mitch Norton
John and Linda O'Connor
Terry O'Connor, MD
Julie Olson
Michael Papworth
Yvonne Parrish-Levin and Wilford Levin
Judy and Herb Patriarche
Joanna Peters
Erin and Jeffrey Pfaeffle
Donna Phebus
Mike and Elaine Phillips
Amanda Pool
Marjorie Praegitzer
JP Prouty
Viki Rankin
Hollie Roberts
Mike Roundy
Timothy Ryan
Mary Schelling
Bill Schliiter and Gloria Kimball
Rhea S. Schwartz and Paul Martin Wolff
Foundation
David Seelos
Caren and Chris Serwan
Cherie Shardlow
Becquel and Jeff Smith
John Sofro
Megan and Justin Stevenson
Megan and Adam Tanous
Bill and Dookie Tinque
Jim Torres, MD
Bill and Annie Vanderbilt
Carol Vannerson
Krista Ward
Sidney and Don Weisberg

Anita Whelan and Richard English
Jim Woolley
Bebe Yoder

GIFTS OF \$100-\$499

Anonymous (44)
Shelly A. Abell
Craig and Vicki Aberbach
Jon and Mary Adams
Pauline Adams
Jami Adrian
Kathleen Alley
Joan Anderson
Linda Anderson
Ted and Leila Angle
Alondra Arevalo
Lisa Avison
The Barmen Moser Charitable Fund of the
Jewish Community Foundation
of Greater Pittsburgh
Beatriz Barriga
Janet Barton
Allison and Dr. Zachary Beatty
Jane Beebe
Abbott/Benevity Fund
Christine Benter
Kay and August Benz
William Beye
Susan and Arnold Blair
Paul Blas
Steven Boettcher*
Kristen Bohachef
Tara Boothe
Bryan Bridwell
Jim and Shellie Bronson
Patty Brothwell
Alyson Brown
Marcia and Henry Brown
Stephen Brown
Fred and Sandy Bryant
Alison Burpee and Sam Smith
Dr. Tracey Busby
Lynn and Craig Cahen
Stefanie Caliva
Delilah Carden
Ragna Caron
William Carr
Ms. Gay Weake and Mr. Jay Cassell
Araceli Castanos

Maria Castanos
Curt and Linda Chambers
Brian Charneski
Guadalupe Chavez
Blair Choate
Lucy Chubb and Sean O'Connell
Norman A. Cocke, III
Garrett Coman, MD
Jane Conard and Rick Maneval
Jennifer Cook
John and Judy Coyne
Robin and Mike Crotty
Sandra and Dan Dahl
Jackie Damerel
Peter Davenport
Patricia Davies
Joanne I. Davis
Megan Davis
Jack and Jeanne Davisson
Peggy Dean
Sally and John Demetre
Jack Demorest
Stacy and Jeff Deuel
Kathy Dick
Stefani and Pete DiDio
Ross Dinkelspiel
Caryle and Dennis Dombrowski
Maureen Dougherty
Amy Downey
Scott Draper
Dunn Deal/Grill at Knob Hill,
Jolie and Bob Dunn, Jr.
Elaine Durkheimer
Robin and Sam East
Jerry and Kathleen Eder
Kenneth and Marsha Edwards
Kacey Fairfield
Pam Feld
Leslie and Mike Feltman
Linda Fischer
Michael Fishman
Melody Flade
Marybeth Flower
Joyce Fogg
Mary Kay Foley
Jeanne and Roger Foreman
Mr. and Mrs. Robert B. Foster
Diana Frazier
Gretel Friedman

Alison and Stephen Frinsko
Steven Galbraith
Rita Garcia
Rosa Garcia
Sandi Garcia
Marlys and Leonard Gerber
Margaret Gering
Leah Giacobazzi
Molly Gill
Elizabeth Gonzalez
Liz and Alex Gray
Sarah Gray
Diana Gregory
Randy Hall
Daniel and Kathleen Hansen
Chip and Mary Hart
Gundi and John Haskell



St. Luke's Wood River Foundation is committed to supporting local staff.

Caring for Our Caregivers

Generosity helps make it possible to recruit and retain critical St. Luke's Wood River staff. This past year, the Foundation, because of donors' generosity, was able to gift employees with vests—to keep caregivers warm as they care for others—as a sign of the community's gratitude. Additionally, the Circle of Friends Fund provided over \$30,000 in need-based assistance to 38 employees and the Carol and Pat McLaughlin, MD, Endowment Fund helped 13 employees with emergency medical expenses.



A record 94% of St. Luke's Wood River doctors participated in the 2021 giving campaign.

Employees and Doctors Reach Giving Milestone

During the 2021 annual Employee Giving Campaign, 82% of St. Luke's Wood River employees and a record 94% of physicians gave to support each other and the community. In the past several years, St. Luke's Wood River employees donate at levels that are among the highest in the nation. "I am proud of our physicians for stepping up to the challenge and look forward to where the partnership with the Foundation goes in the future," said Dr. David McClusky, chief of staff at St. Luke's Wood River.

Karen Hawkes
 Johni Hays
 Lynne and Stephen Heidel
 Roberta and Thomas Heinrich
 Alice Hennessey
 Adam Henson
 Sandra and Craig Hill
 Ursula and David Hinson
 Caroline Hobbs
 Connie Bernsen and Dr. Gary Hoffman
 Lucinda Hoffman
 Karen Hofman
 Kathleen Nichols and Doug Holen
 Lauren Hoover
 Jason and Crystal Houser
 Jeri Howland and Jerry Edelbrock
 Inge and Hans Hub
 Larry and Mimi Huck
 Susan Hughes
 Tonya Hunt
 Siobhan Jameson
 Wendy and Jim Jaquet
 Anne Jeffery and Jack Sept
 Theresa Jensen

Jewish Foundation of Greensboro,
 Susan and Ron Green
 Judith Kindler and Kyle Johnson
 Barbara Johnson
 Jerry and Debbie Johnson
 Eileen Judell
 John P. Kearney*
 Kaye and Gerry Kearns
 J.P. Kelly
 Stephanie Kelly
 Jennifer King
 Alan and Donna Kinsel
 Sue and Bill Kirby
 Sven Klein
 The Klingler Family
 Gina Knox
 Carol and Stephen Koehler
 Jeanne and Rod Koleno
 Chris Kraatz
 Anita Kratochvil
 Lynn and Bill Kronberger
 Barb Kruse
 Teresa and Kevin Laird
 Sheryl Laureano
 Coleman Lay

Wanuz Leal-Wallace
 Gordon Lemon
 Leith Lickteig
 Roy Lightbody
 David Lindow
 Bernadette Lingenfelter
 Sharon and Richard Linville
 Carolyn and John Lloyd
 Jason Lyman
 Mila and Marty Lyon
 Julie Lyons, MD
 Becky Madrigal
 Leslie and Jon Maksik
 Bonnie Marsh
 Lawrence Mast
 Chris McCarthy
 Crystal McCombs
 William T. McConnell
 Ethan McKee-Bakos and Mia Briggs
 Michelle Medsker
 Dr. Gerald and Mrs. Sheila Mells
 Kristin Miller
 Carrie and Brad Mitchell
 Fan and Jim Moberg
 Heather Moller

Megan Mondragon
Jill Morse
Tina Murphy
Bettina Murray
Bruce Nelson
Louise and Jay Noyes
Michel Nunez
Carolyn Nystrom
Charles Olson
Sharon Olson
Brandy Parish
Lance Parish
Brad Patriarca
Sarah Patterson
Carol Penagos
Mindy and Bill Pereira
Jim Perkins
Keith and Paula Perry, Perry's Restaurant
Susan Petersen
Linda and Roger Peterson
Tony Pickering
Mike and Pam Pierce
Lisa Platter
Justin and Janell Porter Family
Guy and Sara Power
Cynthia Preston
Roberta Purrier
Shery Quinones
Guadalupe Raygoza
Tracey Raymond
Dr. and Mrs. Reeck
Jack Regan
Matt and Stephanie Reichert
Chris and Marc Reinemann
Kerry Renner
Melissa Rivelo
Beva Robinson
Margaret Roll
Cristina Romero
Janie Rothschild
Cathie Royston
Marilana Rubatino
Carole and Mike Sampson
Mary Santosuosso
Jill Saunders
Kyle Schweitzer
Maureen and Paul Schwendener
Arthur Scully

Shelli and Robert Seely
David Self
Sarah Seppa
Jennifer Shandley
Suzy Shuster
Sheri Slater
Alison Smart
Smey Family
Barbara Spallino
Sarah and Lincoln Spoor
Ken Steinauer
Nicki Steinberg
Monique and Thomas Stern
Karen Stevens
Alan and Gayle Stevenson
Jenny Stireman
Bob and Betty Stone
Penny Storie
Misty and Jason Strait
The Stumph Family
Mari Swanson
Linda Hillman
Maribel Tamayo
Jazmyn Tapia
Brant Tennant
Carol and Joel Thea
Catherine and Eric Thomas
Laira Thomas, NP
Penny and Edward Thomas
Beverly B. Thompson
Diana Thompson
Earl and Nancy Thompson
Hazel Thorne
Jon Thorson
Rosalie Tornello
Hilary and Onur Torusoglu
Susan Tryon
Sally and Roger Turner
Charlotte Unger
Brian Vance
The Villas
Meg and William Vorm
Lynne Wade
Richard Walker
Cheri and Tom Watson
Amber Weber
Julie Weil
Libby and Robert Weil

Judy Whitmyre
Carolyn Wicklund
Mary and Charley Williams
Charles Wister
Etta Wood
Wood River Women's Foundation
Member's Fund in the Idaho
Community Foundation,
Kathleen Eder

GIFTS OF \$1-\$99

Anonymous (31)
Lucy Abrahams
AmazonSmile
Piper Andrews
Sarah Armstrong
Jillene Arthur
Kelly Askew
Atkinson Family Foundation
Ursula Bannister
Nate Bechtel
Mary Beck
D'Layne Benson
Kathryn Beste
Kristin Bevers
Cat Black
Lisa Blackman
Veronica Bolliger
The Bollings
B. Boyer
Sean Brown
Allison Burns
Nello and Jenny Busdon
Bonnie and Robert Bush
Kathy Butler
Richard Carrothers
Irene Celis Del Castillo
Lorena Chavez
Gabe Cherian
Lisa Cincera
Amanda C.
Berenice Crowder
Meranda Culley
Sophie Curl
Angie and Tony DeRose
Christina Diaz
Saraluz Nava
Daryl Engelhardt
Sabrina Espinoza Mitma

Maria Fernanda Leal Martinez
Michelle Ferry
Erin Finnegan
Joan B. Firman
Jeanne Flowers
Bridget Foley
Jenny Freire
Margery Friedlander
Gia Gabriella
Martha Garcia Hinojo
Jonathan Gardner
Teresa Garen
Naeoming George
Taryn German
Rocio Gil
Tina Gonzalez
Gabby Gonzalez
Raquel Gonzalez
Nancy Grant
Kay Griffith
Alexi Hagen
Emily Hairston
Sara and Tom Hayward
Patricia Heath
Katie and Philip Hobson
Jon Holmquist
Sally Horn
Joe Inman
Page and Maureen Jenner
Layne and Anne Jensen
Megan Jones, RN

Chelsea Kandler
Scott Kelly
Shawna Kennison
Kimberly Kishimoto
Ralph Korach
Natalie Kueneman
Annie Leady
Georgene Leap
Edward M. Lieskovan and
Siwen Hu-Lieskovan
Betty Lira
Delia Lopez
Jenny Lopez
Abigail Mallory
Samantha Manning
Heidi Marcum
Jasmine Marquez
Lexi McCloughry
Brittany McFarland
Reyna Mejico-Castro
Mirian Melgar
Jenn Merrick
Abby Mills
Rodrigo Molina
Tiffany Montoya
Leslie Morfitt
Robert L. Morrison
Tina Niemiste
Kerry Nilsen
Emily O'Connor
Carol O'Loughlin

Ines Orihuela
Lupita Orozco
Melanie Paisley
Tana Parke
Gladys Paucar
Christine Peterson
Natalie Piteo
Kaylie Pomrenke
Haley Poston
Collett Pruitt
Jennifer Rablin
Angela M. Rayborn
Yuliana Regalado
Kelsey Rikken
Beverly Robertson
Rosa Robles
Lucy Sackbauer
Tamara Saleen
Belia Salinas
Joanna Sattler
Tera Schirf
Mike Schirmer
Ryan Schmidt
Jazzy Schofield
Susan and Anthony Scirica
Brigid Sears
Miriam Serrano
Cara Sheehan Johnston
Mark Shellabarger
Derek Shiells
Tawni Smith

Supporting Nurse Education

In 2021, St. Luke's Wood River Foundation offered over \$57,000 in education grants to support future nurses of the College of Southern Idaho as well as special certifications and continued education for Wood River Valley nurses. In doing so, we supported the advancement of nurses within the Wood River community.

Lynn Wade, RN, with a nursing student.



Frances Solano
Hadly Steel
Laurie and Marc Steinberg
Elise and Jim Stelling
Kynli Stewart
Mariah Stout
David Sundholm
Wendy Teullet
Kjersten Timoney
Brenda Trudell
Osiel Valencia
Liz Vargas
Taylor Walsh
Terry Watters
Kelley Weston and Kiki Diepenbrock
Naomi White
Katie Whittier
Lynn Willis and Vic Pettric
The Wohlwend Family
Jess Wright
Marilyn Yaeger
Jill Zelaya

MATCHING GIFTS

Shellie Abbott and Jim Bronson
Bessemer Trust, The Teagle Foundation
Incorporated, Janet and Walter Teagle

GIFTS IN KIND

Barbara Boswell and Harold Robinson
Rickie Brady
Mari and David Clack
Betsy and Mark Gates
Hope Hayward
Anne and Tom Warde

PLANNED GIFTS

Anonymous
Peggy and John Baker
Barbara Boswell
Myrle and Buzz Bradshaw*
Susan and Frank Countner
DeBard Johnson Foundation,
Janet and Roger DeBard
Peggy and Sigi Engl*
Dayle Fowler*
Gay and Bill Fruehling
Hilary Furlong
Johni Hays
Carol Scheifele-Holmes and
Benjamin Holmes

Dr. Harry Huffaker
Judith A. Jellinek
The Johnson Family Fund of the Ayco
Charitable Foundation
Susie King
Ruth Lieder*
David H. Lindow
Camille McCray*
Wilson D. McElhinny
P. Scott McLean Jr., MD
Joan Donaldson, Robb Mickelson and
Bob Mickelson*
Ruth and Roger Miller*
James O. Moore, Jr.*
Donald A. Morrison
Cynthia and Kingsley Murphy
Kim Nalen
Lynne and Bob Nicholson*
Adrian and Bill* Norris
Linda and John O'Connor
Susan Carter Orb
Margo Peck
Christine Peterson
Martha* and Travis Reed
Beth Annable Riall
Mary Rolland
The Jaclyn and Sydney Rosenberg
Foundation, Nancy and Brad Rosenberg
Keith Sivertson, MD
Renee and Jim Strang
Charles Stuhlberg
Megan and Adam Tanous
Rolande and James* Vaughn
Shay Doll and Buddy Wilton
Delores and William Winslow*

GIFTS MADE IN MEMORY OF

Lynne Bockemohle
by Sharon Bockemohle
Jim Coyle
by Kathleen and Hugh Blue
Judith Warde Davis
by Chrissy and Robert Davis
Edmund W. Dumke
by Michelle Dumke Praggastis and
Thomas Praggastis
Charles Ellwanger
by Shellie and Jim Bronson
by Brian Charneski
by Stacy and Jeff Deuel
by Heritage Bank
by Ursula and David Hinson
by Tony Pickering

by Brian Vance
by Carol Vannerson
Nancy Fitzpatrick
by Anonymous
Jerry Flynt
by Susan Flynt
Peter Gaasland
by Susan Gaasland
Dorris Gathrid
by Sidney and Don Weisberg
Cynn timer Griffin
by Wayne Griffin
Peggy Hinman
by Harvey Hinman
Kathy Johnson
by Mary and George Broadbent
by Cathie and Hanley Dawson
Bob Truesdell Jones
by Delores Fery
Bob Lane
by Alice Lane
Bob Loomis
by Sara and Tom Hayward
Tom and Laurel McClain
by Phyllis Parvin
Lynne Nicholson
by Ursula Bannister
by Peggy Dean
by Georgene Leap
William E. Norris
by Adrian Norris
Gretchen Palmer
by Cookie and Michael Lafferty
Dr. Steven Platt
by Sharon and Richard Linville
Bud Purdy
by Susie and Rich Johnson
by Siwen Hu-Lieskovan and
Edward M. Lieskovan
Shirley Renick
by Donna Phebus
Ron Santosuosso
by Mary Santosuosso
Carol Shephard
by Anonymous (3)
by Becky Brown
by Angie and Tony DeRose
by Nancy Grant
by Susan Hughes
by Ralph Korach
by Barb Kruse
by Bernadette Lingenfelter
by Barbara and Robert Matthias
by Terry McNearney
by Carrie Mitchell
by Elizabeth Mullins
by Carol O'Loughlin
by Collett Pruitt
by Roberta Purrier
by Tedde and James Reid
by Margaret Roll

by Peggy and Paul Street
by Susan Tryon
Will Storey
by Delores Fery
by Judy and Herb Patriarche

Fischer Rose Watson
by Suzy Shuster
by Cheri and Tom Watson

Janice "Sis" Weidner
by Mary and George Broadbent
by Cathie and Hanley Dawson

Morton M. Woolley M.D.
by Jane Woolley

GIFTS MADE IN HONOR OF

Dr. Zachary Beatty
by Ann and Dr. Mark Hansen

Nate Bechtel
by Tracey Raymond

Dr. Tracy Busby
by Leisa and Dr. Kenneth Brait

Danielle Crist Carruth
by Mike Schirmer

Nancy and Charlie Cord
by Karen and Bob Robideaux

Mary Ann Crowdsom
by Gayle and Alan Stevenson

Dr. Ricardo Delgado
by Rivian and Stuart Glickman

Emergency Department Staff
by Anonymous
by Kay and August Benz
by Rosmarie Bogner
by Joanne Davis
by Jeanne and Jack Davisson
by Diana Hoover Filkins
by Mr. and Mrs. Robert B. Foster
by Kaye and Gerry Kearns
by Penny and Dennis Storie
by Cheri and Tom Watson
by Sarah and Bill Robertson

Dr. Dan Fairman
by Anonymous (3)
by Rosmarie Bogner
by Inge and Hans Hub

by Martha and Ross Jennings
by Jeanne and Rod Koleno
by James Lindstrom
by Murray McClain
by Gwende and Jim McComas
by Wilson D. McElhinny

Mary Kay Foley and Healing Touch Program
by Margery and Bernard Friedlander

Ginny and Peter Foreman
by Marguerite and Talton Embry

Betsy Gates
by Sheree and John Shoch

Dr. Robert Hall
by Susan and Arnold Blair
by Katrina and Chris Cord

Dr. John Hatzenbuehler
by Linda and Robert Vallee

Emily Karassik
by Barbara Boyer

Dr. Matthew Kopplin
by Mary and Michael Colhoun
by Vivian and Brian Henderson

Elizabeth LaRocca
by Shirley and Ralph Shapiro

Dr. Nancy Mann
by Susan and Arnold Blair

Dr. Leigh Morse
by Betty and Bob Stone

Betsy Mullins
by Ginny and Peter Foreman
by Debbie and Greg Hastings
by Margaret and Bob Houston

Viki and Al Ranking
by Mary Schelling

Dr. Matthew Reeck
by Linda and Robert Vallee
by Gwende and Jim McComas

Betsy and Bob Reniers
by Mary Schelling

Dr. Deb Robertson
by Pauline Adams
by Amanda Black
by Mr. and Mrs. Robert B. Foster
by Rivian and Stuart Glickman

by Happy Hawn
by Viki and Al Rankin
by Sarah and Bill Robertson

Holly Roberts
by Pauline Adams

Adrienne and Rob Robideaux
by Karen and Bob Robideaux

Barb Spallino
by Ann and Dr. Mark Hansen

Megan Tanous
by David Self

Becky and Pete Smith
by Alison and Stephen Frinsko
by Karen and Bob Robideaux

St. Luke's Wood River Foundation
by Johni Hays

Amber Weber
by Cookie and Michael Lafferty

Susan Weil
by Libby and Robert Weil

Lisa Wild
by Maggie and David Sturdevant

Buddy Wilton
by Anonymous
by Amanda Black

Donna Wright
by Cookie and Michael Lafferty

Wound Clinic
by Missy and Tipp Cullen

Dr. Steven Writer
by Susan and Arnold Blair
by Carolyn Wicklund

Patience and Robert Ziebarth
by Mary Schelling

**In memoriam*

St. Luke's Wood River Foundation strives to provide accurate recognition of our donors. If you feel there has been an error or omission, please contact the Foundation office at 208-727-8447.

Legacy Giving

As you plan for your future, you make several important decisions. One of those carefully planned choices may be to create a lasting impact through a legacy gift. Legacy giving is a meaningful way to make a difference that will endure beyond your lifetime, impacting the lives of generations to come.

If your estate plans include a gift to St. Luke's Wood River Foundation, please let us know. We want to thank you for your generosity, honor your wishes and invite you to join our Legacy Society.



Endowment Funds

Endowed funds provide current and long-term support for equipment, programs and services. Principals are invested in accordance with the Foundation's investment policy; earnings are spent in consultation with fund donors and at the discretion of the board of directors. We are grateful to the visionary individuals and foundations who have established endowed funds, which will provide financial security for the medical center well into the future.

ENDOWED FUNDS OF \$1,000,000 OR MORE

Emergency Services Endowment Fund

Emergency services are our community's highest health care priority. The hospital's emergency response network coordinates care from a patient's initial 911 call through arrival at the hospital. Board-certified emergency physicians and highly trained nurses provide the best possible care for patients suffering from heart attacks, strokes or serious injuries.

Pediatric Services Endowment Fund

In 2018, for the first time in over a decade, the hospital welcomed a full-time pediatrician to the valley. Generous community members established this fund to ensure the long-term sustainability of pediatric services.

ENDOWED FUNDS OF \$500,000 OR MORE

Engl Family Endowment Fund

Created in 1973 by the Peggy Emery Engl Descendants' Trust, this was the Foundation's first endowed fund. Annual distributions, made in consultation with members of the Engl Family, support the hospital's priority needs.

P. Scott McLean, Jr., MD, Endowment Fund for Staff Education

This fund, created by the Boswell Family Foundation in 2005, ensures staff can access training to further their expertise in best practices for patient care. Dr. P. Scott McLean, Jr., advises on the fund.

ENDOWED FUNDS OF \$100,000 OR MORE

The Carol and Pat McLaughlin, MD, Endowment Fund for St. Luke's Wood River Employee Medical Expenses

Shay Doll and Buddy Wilton created this fund in 2009 to help hospital employees and their families with co-payments for medical expenses.

Carol Shephard Nursing Scholarship Fund

Carol Shephard established this endowment to fund the educations of aspiring nurses, particularly those who intend to work at St. Luke's Wood River. It supports new nurses' educational goals and high-quality care.

The Deer Creek Fund

This fund, established and advised by Lynn Campion-Waddell, Tom Campion, Ashley Campion and Berit Campion, provides ongoing support for the hospital's priority needs, especially emergency medical services.

Physician Innovation Endowment

This fund gives patients a way to say thank you as well as supports physicians' investments in patient care. The hospital's physicians, through the medical executive committee, decide how to utilize the fund.

Recognition Endowment Fund

This fund was established to express gratitude for health care workers. It has funded recognition events to honor our employees and is a valuable tool in efforts to retain clinical staff.

ENDOWED FUNDS OF \$25,000 OR MORE

Carl A. Gray Memorial Award Fund

Established in 1991 by Harvey Gray, Carl Gray's son, this fund honors the memory of an avid Sun Valley Ski Club member while celebrating excellence in nursing care.

Women's Imaging Center Endowment

This fund was established to support the state-of-the-art Women's Imaging Center, which was fully funded by generous community philanthropy in 2009.

Mission:

To inspire generosity that improves health and well-being in the community.

Vision:

We envision a community where generosity ensures clinical excellence and empowers health for all.

Your generosity impacts lives.
Makes a difference. Heals.



PO Box 7005
Ketchum, Idaho 83340
wrfriends@slhs.org
slwrf.org