



## Generosity Heals

Your generosity impacts lives.  
Makes a difference. Heals.

**2021 DONOR IMPACT REPORT**

# Your Gifts in Action

Each and every investment in St. Luke's Wood River Foundation enhances the health of the community you know and love. Your generosity makes a true and measurable difference in the lives of others.

Nearly  
**\$1 million**

Invested in clinical priorities  
stemming from the  
COVID-19 pandemic.



**19**

Patient rooms  
upgraded with  
telehealth technology.



**\$1 million**



Invested in the new Family Health Services Clinic in Bellevue, which provides  
access to comprehensive health care services to every member of our community.



**12**

New homes under construction  
for health care workers.



**\$50,000+**

In grants to help St. Luke's  
Wood River employees in  
need of financial assistance.

**24**

Scholarships awarded to educate  
clinical staff and students  
pursuing health care careers.



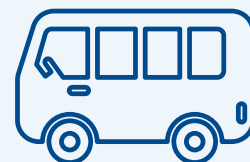
**10,000**

Meals provided to  
feed frontline staff.



**1st**

Mountain Rides non-emergency medical bus service  
for patients traveling between the Wood River Valley  
and Twin Falls for treatment.



**9**

Community health grants  
to empower health for all.



**201**

Patients assisted with health-related  
necessities through the  
Compassionate Care Program.



## St. Luke's Wood River Foundation

### BOARD OF DIRECTORS

#### Officers

Megan Edwards, President  
Roger DeBard, Treasurer  
Matt Kopplin, MD, Secretary

#### Directors

Delvin Ash  
McNair Bailey  
Barbara Boswell  
Jeff Foushee  
Sheila Fryberger  
Betsy Gates  
Roger Gould  
Becky Lopez  
John Monson  
Cynthia Murphy  
Bob Reniers  
Deb Robertson, MD  
Bob Robideaux  
Jeff Smith, St. Luke's Wood River Board of Directors  
Pete Smith  
Megan Tanous, Chief Development Officer  
Jon Thorson, MD  
E. Carlton "Buddy" Wilton

#### Emeritus Council

Judy Atkinson  
Lynn Campion-Waddell  
Nancy Cord  
Michael Engl  
Wayne Griffin  
Geri Herbert  
Ben Holmes  
Wilson McElhinny  
Bud Purdy\*  
Martha Reed\*  
Shirley Renick\*  
Gordon Russell  
Will Storey\*

*\*In memoriam*

## Dear Friends,

Thank you. Despite the challenges of the COVID-19 pandemic, you made it possible to navigate extremely difficult times and courageously invest in the future.

As the Wood River community rose to meet one of the greatest medical challenges of our lifetimes, your gifts provided strength and inspiration. Through your generosity, St. Luke's Wood River Foundation made great strides towards our vision of ensuring clinical excellence and enabling a life of health for each and every member of our community.

This past year, your generosity made it possible to open Family Health Services, a new community clinic in Bellevue. The clinic will expand access to preventive care for those in need. Your partnership also made it possible to begin construction on 12 new homes for health care workers. This investment will help retain and recruit critical health care workers and thereby help to ensure high-quality health care services for years to come.

You also supported our health care team, brought the latest telehealth technology to patients and families, assisted patients in need and advanced the work of community health partners. None of this would have happened without you.

In the pages that follow, we invite you to read about the difference you made.

As we reflect on this past year, we thank you for your partnership. Your kindness and generosity brought hope, healing and inspiration to our community.

With gratitude,



**Megan Dawson Edwards**  
St. Luke's Wood River Foundation  
President



**Megan Tanous**  
St. Luke's Wood River Foundation  
Chief Development Officer



# Grateful for You

Your generosity enabled us to respond quickly and effectively to the pandemic, support St. Luke's Wood River staff as they ensured clinical excellence and empower health for all.

"As a nurse, the care and needs of my patients are my top priority. Working 12-hour shifts as a bedside nurse, there is little time to be concerned with my personal needs. For the first time this year, I've had the opportunity to take precious moments to decompress, relax and regenerate during a demanding shift in the new Resiliency Room. Fifteen minutes of relaxation in the massage chair has a major impact on me and my nursing colleagues. Thank you."

Lynne Wade, RN



"The support of the Foundation is an amazing gift to my community of health care workers. This year, my dad had a traumatic brain injury and my family had to maintain multiple households while traveling to and from Boise to care for my dad. If it hadn't been for the amazing generosity of our community and colleagues to the employee assistance funds, we would have struggled to pay the mortgage and other bills. There is so much generosity provided by the community, whether it is a meal, ChapStick®, hand sanitizer, a warm vest or just a friendly voice to talk to. I am blessed by this generosity but most importantly knowing that people genuinely care."

Janell Porter

*Patient Access Specialist*

"Thank you so much to community generosity for making the beautiful new furniture in the mother/baby unit possible. This new furniture keeps our families safe and comfortable during their stay with us. It also contributes to a homey feel in our rooms and allows our families to really settle in and take in the experience."

Natalie Piteo, RN



“Improving patient care and expanding services is so very important. I am beyond grateful to the Foundation for their support while I went back to school to obtain an advanced degree in imaging to provide local nuclear medicine services in hopes to expand services in the near future.”

Debbie Bothwell

*Nuclear Medical Technology Specialist  
P. Scott McLean, Jr., MD, Endowment for  
Staff Education Grant Recipient*



“I am humbled and extremely proud of the work of the St. Luke’s Wood River team and grateful for our community’s incredible support. When health care providers and community members work together, the power of the partnership means better care for our patients.”

Almita Nunnelee

*St. Luke’s Wood River Chief Operating Officer/  
Chief Nursing Officer*

“Caring for each other is more important now than ever. Thank you to the Foundation and the community for their continued support of St. Luke’s Healing Touch program and trainings. It is truly a gift that keeps giving. Nurses, staff and community members who are trained in Healing Touch share this gift with our patients, family and friends, as well as providing much needed self-care.”

Mary Kay Foley

*Healing Touch team member*



# Leading by Example in the Wood River Valley

Guided by a strong moral compass and an innate sense of civic responsibility, Julie Wrigley courageously tackles local and global challenges with vision, integrity and gusto. Julie leads by example. As president and CEO of Wrigley Investments and the co-founder of Arizona State University's Global Institute of Sustainability—now tied into Global Future Laboratory at ASU where she is co-chair—she connects resources and partners to develop cutting-edge solutions that improve life on earth for all.

"I'm not an activist, but I know morally when it's the right time to act," Julie explained, who credits her social and environmental altruism to the values instilled in her as a child. "The Julie A. Wrigley Foundation is committed to three things: the environment, health care and education." Focusing on initiatives in the regions where she resides, Julie tirelessly walks the talk, supporting causes that forge healthier, happier and more sustainable communities.

In the Wood River Valley, Julie has played a key role in the development of some of St. Luke's Wood River's innovative health services. Her support began with the New Hospital Campaign in 1997, which launched the St. Luke's Wood River Medical Center we know today. Julie's generosity is evident in many of the hospital's current extraordinary services, including the Women's Imaging Center, the Infusion Center and additional top-quality imaging technology. The initiatives to fund this technology have been instrumental in saving lives—providing a level of health care that is rarely found in small communities.

The Women's Imaging Center, which was fully funded through community philanthropy, has performed 38,000 lifesaving digital mammograms since it opened in 2009. More recently, St. Luke's Wood River Foundation invested in 3-D mammography technology to better detect abnormalities in breast tissue and also raised funds for breast MRI technology to improve patient outcomes.

"The health care in this valley is outstanding," Julie said. "We have access to big city health care right here in Blaine County, and we're ahead of the curve for supporting women's health," which is a feat that is important to Julie.


Julie is no stranger to the power of uplifting women. After her husband, William Wrigley, passed away in 1999, she moved to Sun Valley and found solace and strength in her community of female friends. "There was a great mentorship of women friends in this valley who served as an informal support network," she said. Her new home was a natural fit as Julie had been visiting Sun Valley since the early 1950s to ski with her parents. From a young age, she loved the valley's beauty and connection to Mother Nature. Even as a child, she was closely attuned to her surroundings and curious as to the why of what she saw. When she noticed environmental degradation around her, she paid attention.

"I was born with a quirky brain that cared about nature. I was lucky enough to live next to the ocean in Southern California, and I noticed at an early age that the abalone that lived on the rocks along the coast were disappearing. What child cares about a bunch of abalones?" Julie said.

It is Julie's ability to see the details and interconnectedness of environmental, economic and social systems that make her so effective at developing inclusive solutions with real impact. "Our issues are all interrelated," she explained, "and we have to actively develop solutions to ensure sustainable futures for all." Julie believes the pandemic proved that we are deeply intertwined. Borders and imagined walls "do not stop the spread of diseases, social issues or climate change," she said.

Julie urges us to be engaged world citizens and to seize the opportunities in front of us. For example, Julie recognized the need to support the St. Luke's Wood River staff during the COVID-19 pandemic, so she pivoted her giving to the Foundation's Circle





“The health care in this valley is outstanding. We have access to big city health care right here in Blaine County, and we’re ahead of the curve for supporting women’s health.”

*Julie Wrigley*

of Friends program, which provides support to staff facing unexpected financial hardships. “The hospital and the staff have been amazing. They are the reason we have such an incredible hospital and community,” she said.

Julie believes it is time for each of us to open our hearts to others by engaging in our communities. “I

invite everyone of all ages to pick one day a month to think beyond themselves and to do something kind for someone else,” she said. She encourages everyone who has the time and skills—as well as the personal attributes to create a positive ripple in the world—to exemplify “giving back” and show kindness to all.

# Generosity Makes Innovative Technology a Reality

Walk into any of St. Luke's Wood River's 19 inpatient hospital rooms and you will now find virtual care, also known as telehealth, capabilities in every room. Thanks to community generosity, this state-of-the-art technology allows patients to receive top-quality health care and services usually only available in metropolitan areas.

"We are so fortunate to have telehealth available in all inpatient medical rooms. It provides additional support to ensure patients have access to immediate care and strengthens collaboration within the St. Luke's system," said Katie Schneider, MD, a hospitalist at St. Luke's Wood River, which means Schneider is responsible for providing care to patients during their stay at the hospital.

With the installation of telehealth technology, patients can immediately connect with nurses, doctors and specialists in the St. Luke's system and beyond, regardless of geography; physicians can use the telehealth technology to consult with colleagues face-to-face; and if a patient needs assistance when a nurse is actively caring for a patient in another room, another nurse can jump on the screen to support the patient seeking assistance.

"It's been a privilege to see innovative technology, coupled with the incredible dedication of our Wood River team, strengthen the care available to our community," said Dr. Schneider.

Telehealth capacity within U.S. hospitals is limited. St. Luke's Wood River counts itself lucky to have this additional support on hand. In the last year, Wood River and St. Luke's Nampa were the first hospitals in Idaho to provide comprehensive online services, allowing patients and staff access to virtual care and other resources when needed. Other hospitals are now following suit. The St. Luke's Virtual Care Center, a facility with 35,000 square feet, opened in downtown Boise in August 2018. It is one of just a few in the nation.

With two-way cameras and remote monitoring equipment, including a tool that can zoom in to review patients' vital signs, the technology allows doctors and nurses to diagnose and treat patients, support onsite caregivers, order tests as needed, read results and provide immediate evaluations for patients in Ketchum and elsewhere. Since March 2020, St. Luke's Virtual Care Center has conducted over 200,000 clinic visits via telehealth technology.

The challenges presented by the COVID-19 pandemic to health care providers (particularly the lack of enough inpatient beds, practitioners and staff to care for patients) prompted St. Luke's Wood River Foundation to make telehealth a reality. "We are grateful for the incredible generosity from our donors who understood the positive impact telehealth would have on the health and well-being of the community," said Megan Edwards, president of St. Luke's Wood River Foundation.

St. Luke's Wood River Foundation is committed to achieving excellence in health care for Blaine County by advancing innovative programs and services. It was instrumental in rallying community support to realize the dream of comprehensive telehealth resources.

The telehealth technology has been a success. Its benefits include supporting high-quality, personalized care at a reduced cost; improving access to timely care; keeping patients in the community; supporting the bedside team in their demanding roles; strengthening team-based models of care; supporting expanded nurse-to-patient ratios and providing much-needed staff agility.

"Telehealth is a welcome addition to patient care," says Dr. Schneider. "I am so proud of my team and the culture within St. Luke's Wood River where everyone is willing to jump in to go above and beyond to make sure patients are well cared for, medically and otherwise."





“It’s been a privilege to see innovative technology, coupled with the incredible dedication of our Wood River team, strengthen the care available to our community.”

*Katie Schneider, MD*

# Carol Shephard's Vision Supports Aspiring Nurses

Before her passing in December 2021, Carol Shephard partnered with St. Luke's Wood River Foundation to create the Carol Shephard Nursing Scholarship Fund, a new endowment to support the education of aspiring nurses, particularly those who intend to work at St. Luke's Wood River. "For people who are interested in serving others, nursing is the best profession I can imagine," Carol said during her conversations with the Foundation.

The fund is unique in Blaine County and will enable future generations of nurses to pursue their educational goals as well as support high-quality care in the Wood River Valley.

As she approached the end of life, Carol graciously took time to explain her vision and generosity in creating the fund. "I have a limited time left on earth, and I want to leave a meaningful contribution that supports those who are pursuing the nursing profession for the first time." Carol's big heart and extraordinary generosity is a gift to us all. This endowment will invest in talented individuals who are called to serve our community with open hearts and hands.

Carol was inspired to create the nursing endowment fund after reading about a nurse honored by the Carl A. Gray Memorial Award Fund through St. Luke's Wood River Foundation. Each year, the Gray award celebrates the remarkable dedication of a local nurse, while honoring the memory of an avid Sun Valley Ski Club member. Inspired by the story, Carol contacted Megan Tanous, chief development officer of the Foundation, to discuss making her own dream a reality. Interest quickly spread and many of her friends and family honored Carol by contributing and helping to grow the fund.

Nursing was always Carol's priority. A nurse for 45 years, Carol often reflected on the rewards of the profession. "I have done a lot of things in my life, and, in my opinion, nursing is one of the most gratifying and rewarding careers," she said. Carol believed in the importance of promoting the profession because of the essential role nurses play in maintaining a community's well-being as well as the personal fulfillment that comes from serving others.

Carol was three years old when she first dreamed of becoming a nurse. She stayed true to her early calling and pursued nursing in college, during which time she also joined the Navy, which paid for her last year of nursing school. She served as a nurse in the Navy for three years in San Diego, California, before working at several hospitals during her career, including what was then the Blaine County Medical Center in Hailey in the 1980s. Along the way, Carol also earned her law degree and pilot's license.

Carol moved away from Idaho for 19 years, then returned to her home in Hailey after she retired in 2017. She would later serve as the president of St. Luke's Wood River Volunteer Core Board and served on both St. Luke's Wood River Foundation Board and Community Board. "I have had an amazing life," Carol said, "and when I think of one of my greatest accomplishments, it is this scholarship fund. I am very excited and proud of it. I'm grateful that I have the means to help a number of people."

Carol exemplified the spirit of generosity and compassion that is central to St. Luke's Wood River Foundation's mission. She committed to promoting excellence in health care in our community by investing in nurses who, in turn, will help ensure the sustainability of St. Luke's Wood River's services for decades to come.



“I have had an amazing life, and when I think of one of my greatest accomplishments, it is this scholarship fund. I’m grateful that I have the means to help a number of people.”

*Carol Shephard*





# Connection and Community Support Matters

St. Luke's Wood River's staff is exceptional. While organizations generally can claim a handful of stand-out employees, St. Luke's Wood River is teeming with hard-working, highly skilled, compassionate and extraordinary staff members who support and inspire one another.

Time and time again, employees express how grateful they are to work with colleagues deeply committed to excellence and patient care.

Julie Lyons, MD, family physician and vice chief of staff, and her husband, Blair Choate, RN, BSN, lead clinical educator, are pillars of St. Luke's Wood River's all-star staff. Each has worked there for 14 years, devoting their hearts and expertise to improving well-being in Blaine County. After meeting at the hospital during the first year of their second careers, Julie and Blair tied the knot, then committed to supporting St. Luke's Wood River and staying in the valley to raise a family.

While they approached their work in health care from different paths, they agree that the opportunity to care for people inspired them to pursue medical careers. Before joining St. Luke's Wood River, Dr. Lyons was a middle school science teacher. She especially loved teaching health as part of her job and realized that medicine was her passion. "I'm a fourth-generation doctor," she said, "so I also had a lot of role models."

From a young age, Blair pursued jobs that required medical expertise. Blair was a professional lifeguard for the city of Santa Barbara throughout college and for several years after. Later, he ran adventure tours in Idaho and joined the Wood River Fire and Rescue Department. His mom, also a nurse, offered him a glimpse into the nursing profession that he found interesting. "I knew that nursing was something I wouldn't get bored of, and I loved spending time with patients, so it was a perfect fit," Blair said.

To this day, their passion for patient care sustains and inspires them, even after working many grueling, 80-hour weeks during the COVID-19 pandemic. "What I enjoy most about my work is the patient relationship," Dr. Lyons explained. "After 14 years in family medicine, I have been able to care for four to five generations of family members. It's a beautiful opportunity to understand where someone comes from and how to best support them."

Blair echoes this sentiment, reiterating how the teamwork among nurses is amazing and how caring for patients is fulfilling. "For most patients, being at the hospital is one of the scariest times. I love putting the patients at ease, reminding them that they are safe, well cared for and will be supported when they go home," he said. These small yet profound acts of tenderness and compassion are what make St. Luke's Wood River special.

This attention to detail and commitment to excellence is also an extraordinary characteristic of St. Luke's Wood River Foundation's donors. "The Foundation is amazing at working with doctors to help identify additional resources we need," said Dr. Lyons. "They helped me secure a vision scanner for [three- to five-year-old children] who have vision deficits and a point-of-care ultrasound that allows us to do bedside assessments inside and outside the hospital. These seemingly little things make a big difference."

Whether it's new patient chairs or beds, meals for the staff during the COVID-19 pandemic, professional development and education for staff, resuscitation beds for babies or important renovations, St. Luke's Wood River Foundation delivers. Always thinking a step ahead, St. Luke's Wood River Foundation makes sure the hospital receives the necessary support and resources to deliver excellent patient care. This is all thanks to overwhelming community generosity. Along with St. Luke's Wood River staff, our community donors are the backbone of a healthy Blaine County.

“St. Luke’s Wood River Foundation is amazing at working with doctors to help identify additional resources we need.”

*Julie Lyons, MD*





# Expanding Care for All

Despite the extreme challenges of the COVID-19 pandemic, St. Luke's Wood River Foundation moved forward this past year to expand care in the Wood River Valley, knowing that courage and trust was needed to continue to support health care excellence and improve access.

"We knew we wanted to help increase access to care," said longtime Foundation board member Pete Smith. The Foundation recognized that expansion needed to remain a priority.

While the Wood River Valley is known for its excellent health care, its most vulnerable community members in need were not accessing preventative care. St. Luke's Wood River Community and Foundation boards recognized the critical need to expand care for those without insurance, so committed to help bring Family Health Services, a federally qualified health center and non-profit, to the valley.

"I believe this is one of the most impactful efforts that St. Luke's Wood River Foundation and the hospital have undertaken," said Megan Tanous, St. Luke's Wood River Foundation's chief development officer.

A \$1 million grant from St. Luke's Wood River Foundation made it possible to renovate and equip the new clinic in Bellevue. Others stepped forward to help. Paul Conrad of Conrad Construction committed to remodeling the space, despite the high demand for construction, and many local physicians also volunteered their time.

In January 2022, Family Health Services opened its doors, offering medical, dental, behavioral health, mental health and pharmacy services to care for the uninsured and under-insured in Blaine County.

"We are grateful to the many people who have helped put St. Luke's Wood River Foundation in the position of strength from which it could invest in a solution that will help so many families," said Foundation Board President Megan Dawson Edwards.

Family Health Services is one of 15 federally qualified non-profit health care providers in Idaho, with 2,000 clinics across the country. Staffed with two full-time nurse practitioners, a full-time dentist, a dental hygienist, a pharmacist and bilingual staff support, Family Health Services serves people of all ages, including patients who use Medicare and Medicaid.

The community clinic is structured to serve patients who may not otherwise seek care due to financial reasons. This is key in a community like Blaine County, which has one of the most extreme wealth gaps in the country. Last year, over 1,500 Blaine County residents traveled many miles to Family Health Services clinics in Jerome and Fairfield for care, leaving no question about the demand for this service in the Wood River Valley. Unfortunately, while Family Health Services tried for years to open a clinic in Blaine County, it was never able to secure government grants because of the county's high median income and positive health statistics.

"The support from St. Luke's Wood River Foundation, St. Luke's Wood River and the community made it possible to open Family Health Services in the Wood River Valley. We are thrilled to offer excellent health care to folks who might be choosing between paying rent or going to the doctor," said Aaron Houston, CEO of Family Health Services.

Generous donors echoed this sentiment. "Everyone deserves good health care," said Holley duPont, a St. Luke's Wood River Foundation donor and project supporter, noting that it's important to support those who don't have the resources to readily access it.

The launch of Family Health Services is a testament to the strength of community generosity in the Wood River Valley as well as the community's commitment to fostering a healthier region for decades to come.





Megan Dawson Edwards, Foundation board president; Aaron Houston, Family Health Services CEO; Sally Gillespie, retired Foundation board member; Barbara Boswell, Sheila Fryberger, Delvin Ash and Pete Smith, Foundation board members; and Megan Tanous, the Foundation's chief development officer and a board member, celebrate the opening of the new Family Health Services Clinic in Bellevue.

“We are grateful to the many people who have helped put St. Luke’s Wood River Foundation in the position of strength from which it could invest in a solution that will help so many families.”

*Megan Dawson Edwards, St. Luke’s Wood River Foundation board president*

# Financial Health

Thanks to the steadfast generosity of our donors, the financial health of St. Luke's Wood River Foundation is strong. Nearly \$3 million in philanthropic revenues were generously given during the 2021 fiscal year, with funds invested in COVID-19 testing strategies, new technologies, staff support, clinical education, health care scholarships, patient assistance and community health partnerships. This year, we also committed to securing our Wood River Valley health care workforce by funding the construction of 12 new homes for hospital staff.

The Foundation continues to preserve and enhance capital through prudent management of our investment portfolio. Today, due to steadfast community generosity, the Foundation has more than \$35 million in assets that will advance the health of our community for years to come.

## St. Luke's Wood River Foundation Statement of Assets and Net Assets

Cash Basis as of September 30, 2021

### Fiscal Year 2021

#### Assets

|                        |               |
|------------------------|---------------|
| Cash                   | \$ 249,315    |
| Investments, at Market | \$ 34,786,603 |

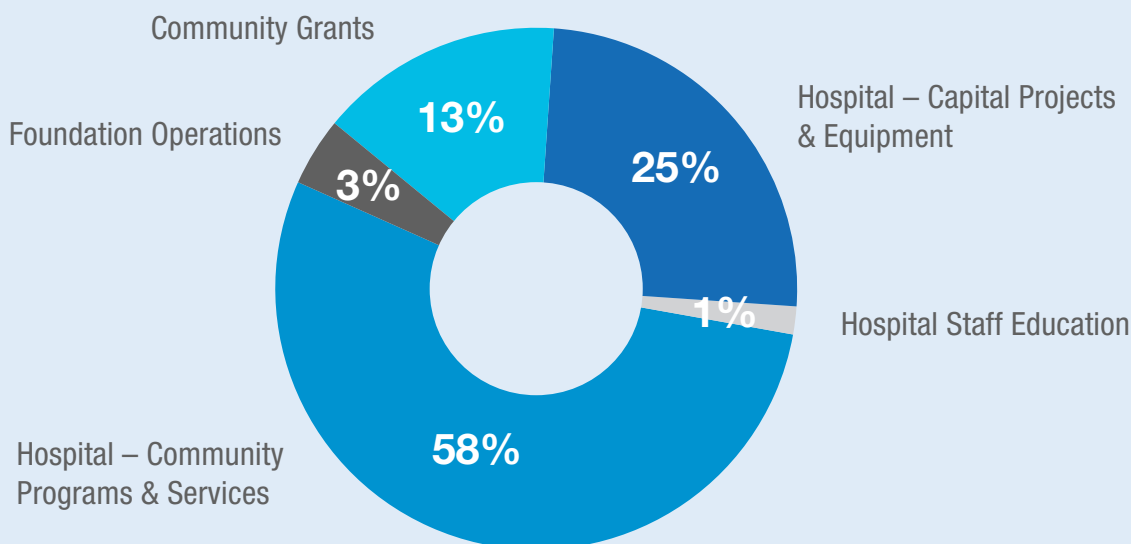
**Total Assets** **\$35,035,918**

#### Net Assets

|                             |               |
|-----------------------------|---------------|
| Unrestricted                |               |
| General                     | \$ 22,450,009 |
| Board-Designated Endowments | \$ 3,466,334  |
| Permanently Restricted      | \$ 9,119,575  |

**Total Net Assets** **\$ 35,035,918**

## Gifts Distributed



# In Appreciation

## 2021 Donors

*St. Luke's Wood River Foundation gratefully acknowledges the following individuals, foundations and corporations who made generous contributions January 1 through December 31, 2021. Thank you for partnering with us in our mission to inspire generosity that improves health and well-being in the community.*

### GIFTS OF \$250,000 AND GREATER

Camille McCray\*

### GIFTS OF \$100,000-\$249,999

Shay Doll and Buddy Wilton

Kemmerer Family Foundation,  
Peter and Betty Gray

The Allan Pinkerton Family

### GIFTS OF \$50,000-\$99,999

Anonymous (2)

Wendy and Jim Drasdo

Wayne Griffin, Jr.

Marmot Foundation,  
Miren and Willis du Pont

Sharon McLain and Donald Dunbar

The Ambrose Monell Foundation

Sam & Peggy Grossman Family Foundation,  
Peggy and Sam Grossman  
Ginna and John Grossman

Carol Shephard\*

The Milias Foundation,  
Margot and Mitch Milias  
Anne and Sean Ryan

### GIFTS OF \$25,000-\$49,999

Anonymous (2)

Barbara Boswell and Harold Robinson

Robert Colman

The Martine and Dan Drackett Family  
Foundation

Elizabeth McGraw Webster & Maricich-Paen  
Family Foundation

Sirius Fund

Mr. and Mrs. N. Peter Hamilton

Patty Duetting and Dick Hare

Heinz Family Foundation,  
Teresa Heinz-Kerry and John Kerry

Pete and Bonnie\* Kremer

Marshall Carroll Charitable Fund

Gwende and Jim McComas

The Nelles Foundation,  
Gail and Duane Nelles

Val A. Browning Charitable Foundation

The Ward Family

Catherine and Tracy Wolstencroft

Julie Ann Wrigley Foundation,  
Julie Wrigley

### GIFTS OF \$10,000-\$24,999

Anonymous (2)

Laurie and Paul Ahern

Craig and Pam Bailey

Baker Family Fund at Spur Community  
Foundation

Blank Family Foundation,  
Jerry Blank

Nancy and Doug Bradshaw

Bob and Penny Brennan

Mary and George Broadbent

Brown-Monson Foundation,  
Susan and John Monson

Kingsley and John Croul

Cathie and Hanley Dawson

Draper Family Foundation

Don and Ellen Easterbrook

Jana and Jeff Foushée

Gardner Grout Foundation

Mark and Betsy Gates

George and June Block Family  
Foundation, Mathew Vanderkloot and  
Barbara Block-Vanderkloot

Gordon Ross Medical Foundation,  
Mary and Stephen Malkmus  
Tori Pinkerton

The Hamilton Family Foundation,  
Mr. and Mrs. N. Peter Hamilton

Vivian and Brian Henderson

Martha and Ross Jennings

Courtney and Steven Kapp

Bill and Jeanne Landreth

Alison and Jim Luckman

The Sue & Bob McCollum Family  
Foundation,  
Sue and Bob McCollum

McCrea Foundation,  
Cheryl and John Welsh III

Wilson D. McElhinny

Cynthia and Kingsley Murphy

Nancy Eccles and Homer M. Hayward  
Family Foundation,  
Walter Eisank and Hope Hayward

Cynthia and Randolph Nelson

Lynne and Bob Nicholson\*

The Ochsman Foundation,  
Esther and Michael Ochsman

Vickie and Edward O'Gara

Joan and Mike O'Neil

The Palmedo Spur Fund at Spur  
Community Foundation

Tom Perakos

James and Tedde Reid

Betsy and Bob Reniers

The Rogers Foundation

Robertson Foundation

Sandy and Jodi Sanders

Laurie and Norman Schultz

Linda B. Segre

Diane and Tom Smith

Richard Smooke and Family

Walter and Janet Teagle

The AC Houston Lumber Co.

The Otis Booth Foundation,  
Stephanie and Steve Shafran

The William Chinnick Charitable  
Foundation, Nancy and William  
Swaney

Workday Foundation,  
Carol and Greg Lindstrom

Barbara and Stanley Zax

### GIFTS OF \$5,000-\$9,999

A.M. Dachs Foundation,  
Alan Dachs

The Albert Parvin Foundation

Jan Aronson and Dominique Finas

Delvin and Joe Ash

Sara and William Barrett

Mari and David Clack

Mary and Michael Colhoun

The Carlos A. Cordeiro Foundation



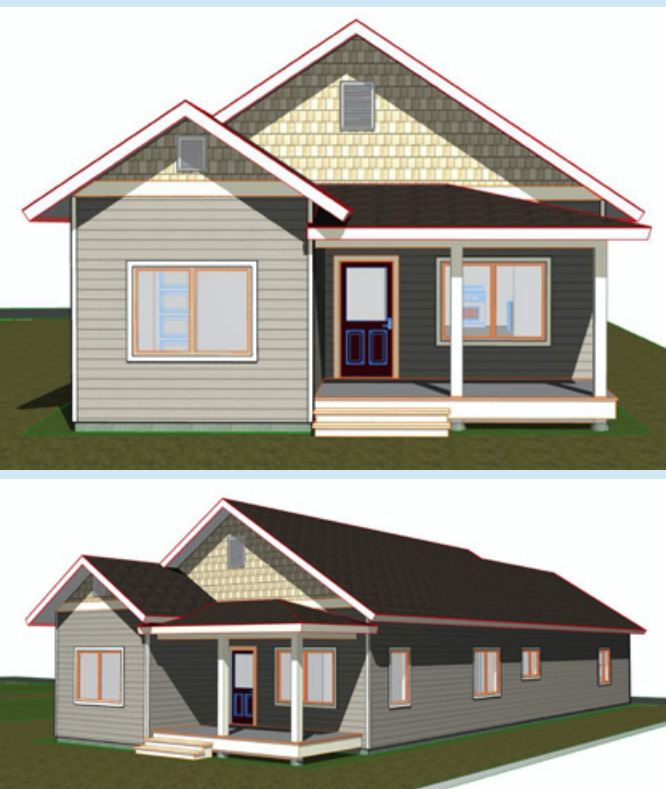
Missy and Tipp Cullen  
 Peter and Quin Curran  
 Patricia and Gary Darman  
 Elizabeth and Mark De Reus  
 DeBard Johnson Foundation,  
 Janet and Roger DeBard  
 Marguerite and Talton Embry  
 Susan Flynt  
 Dr. Monica Lopez and Sameer Gandhi  
 The Great Day Fund,  
 Jennifer and Jim Milgard  
 Shirley and Harry Hagey  
 Geri Herbert  
 Peggy Hicks  
 Margaret and Bob Houston  
 Cynthia and Blair Hull  
 George and Leslie Hume  
 The James J. Colt Foundation,  
 Robert Rand  
 Susie and Rich Johnson  
 Ray and Louise Knowles  
 Alice Lane  
 Laural Foundation,  
 Lauren Dachs  
 Mr. Nils C. Lind  
 James E. Lindstrom

Aphrodite and Anastase Livieratos  
 Ann Morris  
 Donna Jean Morse  
 Janet Nathanail and William Flanz  
 Sally and William Neukom  
 Sheron and Roger O'Connell  
 Wendy and Alan Pesky  
 Perlstein Foundation,  
 Jan Philipsborn  
 Michelle Dumke Praggastis and  
 Thomas Praggastis  
 Rhonda Robbins and Robert Bykerk  
 Sarah and Bill Robertson  
 Bob and Beth Rohe  
 Peggy and Paul Street  
 Sun Valley Company & Rally for the  
 Valley  
 The Teagle Foundation Incorporated,  
 Walter and Janet Teagle  
 Elizabeth C. and Thomas T. Tierney  
 Joan and John Valaas  
 Nancy Crandall and Stephen Wall  
 Van Watkins  
 David and Trish Wilson  
 Judy and Alex Woodard

Karen Oswalt and Craven Young  
 Bob and Patience Ziebarth

## GIFTS OF \$2,500-\$4,999

Anonymous (4)  
 John Bailey  
 McNair and Will Bailey  
 Amanda Black  
 Kathleen and Hugh Blue  
 Lisa and Perry Boyle  
 Pete and Nancy Buck  
 Nina Carroll  
 Katrina and Chris\* Cord  
 Cherie and Steve Crowe  
 Bobbie and Art Dahl Fund in the  
 Idaho Community Foundation  
 Jim and Wendy Daverman  
 Judith Warde Davis Foundation  
 Mary DeWitt Wilson Family Fund at  
 Spur Community Foundation  
 Mr. and Mrs. James W. DeYoung  
 Dee Pritchard and Richard Dick  
 Stacey and Lance Doby  
 Carey and John Dondero  
 Ann and Mark Edlen



New housing for St. Luke's Wood River employees will help ensure high-quality health care.

## Generosity Launches Housing Efforts

St. Luke's Wood River Foundation, St. Luke's Wood River Medical Center and ARCH Community Housing Trust came together this past year in a collaboration to develop 12 new homes for hospital employees.

Construction began in fall 2021 on four three-bedroom single family homes at Quigley Farms in Hailey for St. Luke's Wood River employees; these first four will be available in fall 2022. Construction is underway on the remaining eight units, located in Hailey and Bellevue.

"The limited availability of housing to rent or own is a challenge felt by our entire community and significantly impacts our ability to recruit and retain critical health care workers," said Erin Pfaeffle, director of community engagement at St. Luke's Wood River. The homes will be long-term rentals for St. Luke's employees, clinical and non-clinical. The leases will stipulate that continued employment is a condition of housing.

The Foundation and its partners also recognized that an investment in affordable housing would make a significant difference in health care workers' lives, which in turn would make a difference in the community. Generosity made this possible.

Megan and Chris Edwards  
 Linda and Bob Edwards  
 Joan Einbender  
 Sandy and Jim Figge  
 Cynthia and Edsel Ford  
 Ted and Linda Fouts  
 The Frances Louise Wolfson Family Foundation,  
 Frances L. Wolfson  
 Jeri L. Wolfson  
 Gay and Bill Fruehling  
 Ali and Marc Fuller  
 Robert and Kathryn Gardner  
 The Gerlits Family Fund at The Chicago Community Foundation  
 The Gilhuly Family  
 Peter and Betty Gray  
 Dennis Hanggi  
 Heart of Gold Fund in the Idaho Community Foundation  
 Carol Scheifele-Holmes and Benjamin Holmes  
 Marianne and Bob Honey  
 The Roy A. Hunt Foundation,  
 Jodie and Daniel Hunt  
 Elinor and Ross Jannotta  
 Judith A. and Frank H.\* Jellinek, Jr. Family Fund of the New Hampshire Charitable Foundation  
 Sydney and Admiral Jay Johnson  
 The Johnson Family Fund of the Ayco Charitable Foundation  
 Judy and Leon Jones  
 Donald Kress  
 Cookie and Michael Lafferty  
 Lana and David Latchford  
 Kathie Levison  
 Bob Leyse  
 Marcia and Don Liebich  
 Carol and Greg Lindstrom  
 Michael Mars and Terri Campbell  
 John and Cherie Morris  
 Patricia K. Murphy  
 Mary and Matt Murray  
 The Nalen Foundation,  
 Kim Nalen  
 Carol P. Nie Fund at Spur Community Foundation  
 Pasadena Community Foundation,  
 Patsy and William Pinney  
 Margo Peck  
 William S. and Linda A. Potter

Joy and Jack Prudek  
 Jennifer and Peter Roberts  
 Deborah Robertson, MD, and Jeff Lamoureux  
 Bob and Karen Robideaux, Robideaux Family Fund  
 Kim and Chris Roth  
 Neil Ryan and Phebe Thorne  
 Dr. Roger and Kathy Sanger  
 Silver Creek Outfitters,  
 Susie and Terry Ring  
 Bruce D. Smith and Anndel N. Kininmonth Fund at The Chicago Community Foundation  
 Becky and Pete Smith  
 Julie and Peter Stott  
 Christal and Jeff Taylor  
 Lou Ann and Sean Terry  
 David B. Theobald  
 Robert and Linda Vallee  
 Jill and Fred Vogel  
 Warde Foundation,  
 Ann and Tom Warde  
 Sarah Wilcox  
 Jeri L. Wolfson Foundation,  
 Jeri L. Wolfson  
 Jane Woolley  
 Sally and David Wright

### GIFTS OF \$1,000-\$2,499

Anonymous (10)  
 Marie Stanislaw and Steve Abel  
 Jane A. Acomb  
 Charlotte and Dr. Terry Ahern  
 Renie Alverson  
 Lyn and David Anderson  
 Don and Judy Atkinson  
 Gwynn and Mitchel August  
 Peter and Ruby Becker  
 Rebecca Follo and Tom Bentley  
 Frances and Edward Blair, Jr.  
 Beverly Boas  
 Sharon Bockemohle  
 Debbie and Spike Booth  
 Borman Family  
 Sandra Bosley  
 Angela Brady  
 Bretall Family Fund of the Silicon Valley Community Foundation  
 Amber Busuttil Mullen  
 Hans Carstensen  
 Dan and Micki Chapin

Christensen Family Foundation  
 Tom Christie  
 Jeff, Kathy, Jack and Robert Cilek  
 Erin and Neil Clark  
 Creekside Foundation,  
 Kate and Eric Dachs  
 Gary and Susan Crowe  
 Anthony and Judy D'Angelo  
 Lucy and John Douglas  
 Dr. Amy Drumm  
 Anne Edmondson  
 Ben and Robyn Enders  
 Susan A. Engs  
 Dr. Cathryn Erickson  
 Stephanie and Andy Evans  
 James Farley  
 Timme and Peter Feininger  
 Julie Firestone  
 Marcia and Bob Fosberg  
 Carol and Paul Fremont-Smith  
 Elaine and John French  
 Susan Gaasland  
 Barbara and Michael Gettelman  
 Judy and Ernie Getto  
 Stuart and Rivian Glickman  
 Peggy Elliott Goldwyn  
 Deidre and Lawrence Gordon  
 Roger and Margaret Gould  
 Margaret B. Gray  
 Sue and Dan Guggenheim  
 Barbara and Tod Hamachek  
 Debbie and Greg Hastings  
 Stephanie and Dr. John Hatzenbuehler  
 Happy Hawn  
 Heritage Bank  
 Bobbie and John Herrell  
 Dr. Bart Hill  
 Harvey Hinman  
 Pamela Irby  
 Mr. and Mrs. Tim P. Johnson  
 Kathy and Jerry Kavka  
 Cynthia King Vance  
 Cindy and George Kirk  
 Marge and Jeffrey Lewis  
 Linderman Family Fund  
 Dabney and Dr. Tift Mann  
 Dorrie and David Marks  
 Kiki and Wayne Martin  
 Ed Matthews and Vilma Keri



Barbara and Robert Matthias  
 David A. McClusky II  
 Jim and Willa McLaughlin  
 Alex and Carolyn Mehran  
 Claudia and Laine Meyer  
 John Milner and Kim Taylor  
 Jane and Steve Mitchell  
 Moos Family  
 Julie Weston and Gerry Morrison  
 Susan and Furman Moseley  
 Ann Jones and Tim Mott  
 Stephen and Carenda Mowry  
 Becky and Michael Neidorf  
 Christine and Philip Neuhoff  
 Adrian Norris  
 Gail and Dr. Robert O'Donnell  
 Jane and Tom Oliver  
 Anita Braker and Dave Olsen  
 Stephanie and Nicholas Osborne  
 Maureen and Barrett Ott  
 Susan Parslow and Dr. Paul Monahan  
 Suzie and Garry Pearson  
 Kandis Pedersen-Romero  
 Stephanie and John Perenchio  
 Connie Cox and Tony Price  
 Patty Puz  
 Michele Randall  
 Gwen and Dennis Raney  
 Mark Rice  
 Pam Sandine  
 Tom and Jill Schriber  
 Ann and Irwin Sentilles  
 Shirley and Ralph Shapiro  
 Sheree and John Shoch  
 Sharon Peters and Dr. Keith Sivertson  
 Vinton and Amelia Sommerville  
 Tom and Kathy Stevens  
 Charles Stuhlberg  
 Maggie and David Sturdevant  
 Karrie Swaner  
 Roselyne Swig  
 The Melly Foundation,  
 Patricia Klahr and Lee S. Melly  
 The Seattle Foundation,  
 Jean Enersen and Bruce Carter  
 Gail S. Thornton  
 Beth and Mike Toal  
 Reva and Bill Tooley  
 Lois B. Ukropina

Diana and Mallory Walker  
 Ellen and John Wallace  
 Lisa and Dave Whorton  
 Kathryn Woods, MD, and  
 Richard Paris, MD  
 Anne and Robert Wright  
 Cheryl and Peter Ziegler

## GIFTS OF \$500-\$999

Anonymous (7)  
 Barbara and Chip Angle  
 Samuel H. and Mary Jane Armacost  
 Betsy and John Ashton  
 Ms. Mary Bachman and  
 Mr. William Downing  
 Shannon Shields and Dr. Frank Batcha  
 Mr. and Mrs. Mark Baumgardner  
 Rosmarie Bogner  
 Debbie and Brian Bothwell  
 Bowles Lawrence Foundation,  
 Jill and Mark Lawrence  
 Josh Bowyer  
 Leisa and Dr. Kenneth Brait  
 Becky Brown  
 Charles Carlson  
 Danielle and Kenton Carruth  
 Community Foundation of Louisville,  
 Carolyn and Julian Van Winkle  
 Leon Condon  
 Ed and Jan Cummins  
 Lisa and Bill Dana  
 Lauren and Richard Davis  
 The de Peyster Family Fund of the  
 Community Foundation for Palm Beach  
 and Martin Counties  
 Karen and Marc de Saint Phalle  
 Ceil and Tony Dibuono  
 Maureen and Jonathan Edwards  
 Dan S. Fairman, MD  
 Delores Fery  
 Jesse Foster  
 Dr. and Mrs. Charles D. Fraser, Jr.  
 Sheila and Dates Fryberger  
 Traci Gaudreau  
 Sally Gillespie  
 Ann and Dr. Mark Hansen  
 Patricia and Alex Higgins  
 Diana Filkins  
 Derek Ipsen  
 Virginia Johnson

Steven and Emily Karassik  
 Alison Kinsler  
 Amy and Stephen Kroll  
 John Lane  
 Karin Lindholm  
 Alysia May and Mikie Geron  
 Murray McClain  
 Marge and Nate McGrew  
 Terry McNearney  
 Jeff and Nancy Mihalic  
 Dr. Leigh Morse  
 Robert Mueller  
 Elizabeth Mullins  
 Mitch Norton  
 John and Linda O'Connor  
 Terry O'Connor, MD  
 Julie Olson  
 Michael Papworth  
 Yvonne Parrish-Levin and Wilford Levin  
 Judy and Herb Patriarche  
 Joanna Peters  
 Erin and Jeffrey Pfaeffle  
 Donna Phebus  
 Mike and Elaine Phillips  
 Amanda Pool  
 Marjorie Praegitzer  
 JP Prouty  
 Viki Rankin  
 Hollie Roberts  
 Mike Roundy  
 Timothy Ryan  
 Mary Schelling  
 Bill Schliiter and Gloria Kimball  
 Rhea S. Schwartz and Paul Martin Wolff  
 Foundation  
 David Seelos  
 Caren and Chris Serwan  
 Cherie Shardlow  
 Becquel and Jeff Smith  
 John Sofro  
 Megan and Justin Stevenson  
 Megan and Adam Tanous  
 Bill and Dookie Tinque  
 Jim Torres, MD  
 Bill and Annie Vanderbilt  
 Carol Vannerson  
 Krista Ward  
 Sidney and Don Weisberg

Anita Whelan and Richard English  
Jim Woolley  
Bebe Yoder

## GIFTS OF \$100-\$499

Anonymous (44)  
Shelly A. Abell  
Craig and Vicki Aberbach  
Jon and Mary Adams  
Pauline Adams  
Jami Adrian  
Kathleen Alley  
Joan Anderson  
Linda Anderson  
Ted and Leila Angle  
Alondra Arevalo  
Lisa Avison  
The Barmen Moser Charitable Fund of the  
Jewish Community Foundation  
of Greater Pittsburgh  
Beatriz Barriga  
Janet Barton  
Allison and Dr. Zachary Beatty  
Jane Beebe  
Abbott/Benevity Fund  
Christine Benter  
Kay and August Benz  
William Beye  
Susan and Arnold Blair  
Paul Blas  
Steven Boettcher\*  
Kristen Bohachef  
Tara Boothe  
Bryan Bridwell  
Jim and Shellie Bronson  
Patty Brothwell  
Alyson Brown  
Marcia and Henry Brown  
Stephen Brown  
Fred and Sandy Bryant  
Alison Burpee and Sam Smith  
Dr. Tracey Busby  
Lynn and Craig Cahen  
Stefanie Caliva  
Delilah Carden  
Ragna Caron  
William Carr  
Ms. Gay Weake and Mr. Jay Cassell  
Araceli Castanos

Maria Castanos  
Curt and Linda Chambers  
Brian Charneski  
Guadalupe Chavez  
Blair Choate  
Lucy Chubb and Sean O'Connell  
Norman A. Cocke, III  
Garrett Coman, MD  
Jane Conard and Rick Maneval  
Jennifer Cook  
John and Judy Coyne  
Robin and Mike Crotty  
Sandra and Dan Dahl  
Jackie Damerel  
Peter Davenport  
Patricia Davies  
Joanne I. Davis  
Megan Davis  
Jack and Jeanne Davisson  
Peggy Dean  
Sally and John Demetre  
Jack Demorest  
Stacy and Jeff Deuel  
Kathy Dick  
Stefani and Pete DiDio  
Ross Dinkelspiel  
Caryle and Dennis Dombrowski  
Maureen Dougherty  
Amy Downey  
Scott Draper  
Dunn Deal/Grill at Knob Hill,  
Jolie and Bob Dunn, Jr.  
Elaine Durkheimer  
Robin and Sam East  
Jerry and Kathleen Eder  
Kenneth and Marsha Edwards  
Kacey Fairfield  
Pam Feld  
Leslie and Mike Feltman  
Linda Fischer  
Michael Fishman  
Melody Flade  
Marybeth Flower  
Joyce Fogg  
Mary Kay Foley  
Jeanne and Roger Foreman  
Mr. and Mrs. Robert B. Foster  
Diana Frazier  
Gretel Friedman

Alison and Stephen Frinsko  
Steven Galbraith  
Rita Garcia  
Rosa Garcia  
Sandi Garcia  
Marlys and Leonard Gerber  
Margaret Gering  
Leah Giacobazzi  
Molly Gill  
Elizabeth Gonzalez  
Liz and Alex Gray  
Sarah Gray  
Diana Gregory  
Randy Hall  
Daniel and Kathleen Hansen  
Chip and Mary Hart  
Gundi and John Haskell



St. Luke's Wood River Foundation is committed to supporting local staff.

## Caring for Our Caregivers

Generosity helps make it possible to recruit and retain critical St. Luke's Wood River staff. This past year, the Foundation, because of donors' generosity, was able to gift employees with vests—to keep caregivers warm as they care for others—as a sign of the community's gratitude. Additionally, the Circle of Friends Fund provided over \$30,000 in need-based assistance to 38 employees and the Carol and Pat McLaughlin, MD, Endowment Fund helped 13 employees with emergency medical expenses.





## Employees and Doctors Reach Giving Milestone

During the 2021 annual Employee Giving Campaign, 82% of St. Luke's Wood River employees and a record 94% of physicians gave to support each other and the community. In the past several years, St. Luke's Wood River employees donate at levels that are among the highest in the nation. "I am proud of our physicians for stepping up to the challenge and look forward to where the partnership with the Foundation goes in the future," said Dr. David McClusky, chief of staff at St. Luke's Wood River.

Karen Hawkes  
 Johni Hays  
 Lynne and Stephen Heidel  
 Roberta and Thomas Heinrich  
 Alice Hennessey  
 Adam Henson  
 Sandra and Craig Hill  
 Ursula and David Hinson  
 Caroline Hobbs  
 Connie Bernsen and Dr. Gary Hoffman  
 Lucinda Hoffman  
 Karen Hofman  
 Kathleen Nichols and Doug Holen  
 Lauren Hoover  
 Jason and Crystal Houser  
 Jeri Howland and Jerry Edelbrock  
 Inge and Hans Hub  
 Larry and Mimi Huck  
 Susan Hughes  
 Tonya Hunt  
 Siobhan Jameson  
 Wendy and Jim Jaquet  
 Anne Jeffery and Jack Sept  
 Theresa Jensen

Jewish Foundation of Greensboro,  
 Susan and Ron Green  
 Judith Kindler and Kyle Johnson  
 Barbara Johnson  
 Jerry and Debbie Johnson  
 Eileen Judell  
 John P. Kearney\*  
 Kaye and Gerry Kearns  
 J.P. Kelly  
 Stephanie Kelly  
 Jennifer King  
 Alan and Donna Kinsel  
 Sue and Bill Kirby  
 Sven Klein  
 The Klingler Family  
 Gina Knox  
 Carol and Stephen Koehler  
 Jeanne and Rod Koleno  
 Chris Kraatz  
 Anita Kratochvil  
 Lynn and Bill Kronberger  
 Barb Kruse  
 Teresa and Kevin Laird  
 Sheryl Laureano  
 Coleman Lay

Wanuz Leal-Wallace  
 Gordon Lemon  
 Leith Lickteig  
 Roy Lightbody  
 David Lindow  
 Bernadette Lingenfelter  
 Sharon and Richard Linville  
 Carolyn and John Lloyd  
 Jason Lyman  
 Mila and Marty Lyon  
 Julie Lyons, MD  
 Becky Madrigal  
 Leslie and Jon Maksik  
 Bonnie Marsh  
 Lawrence Mast  
 Chris McCarthy  
 Crystal McCombs  
 William T. McConnell  
 Ethan McKee-Bakos and Mia Briggs  
 Michelle Medsker  
 Dr. Gerald and Mrs. Sheila Mells  
 Kristin Miller  
 Carrie and Brad Mitchell  
 Fan and Jim Moberg  
 Heather Moller

Megan Mondragon  
 Jill Morse  
 Tina Murphy  
 Bettina Murray  
 Bruce Nelson  
 Louise and Jay Noyes  
 Michel Nunez  
 Carolyn Nystrom  
 Charles Olson  
 Sharon Olson  
 Brandy Parish  
 Lance Parish  
 Brad Patriarca  
 Sarah Patterson  
 Carol Penagos  
 Mindy and Bill Pereira  
 Jim Perkins  
 Keith and Paula Perry, Perry's Restaurant  
 Susan Petersen  
 Linda and Roger Peterson  
 Tony Pickering  
 Mike and Pam Pierce  
 Lisa Platter  
 Justin and Janell Porter Family  
 Guy and Sara Power  
 Cynthia Preston  
 Roberta Purrier  
 Shery Quinones  
 Guadalupe Raygoza  
 Tracey Raymond  
 Dr. and Mrs. Reeck  
 Jack Regan  
 Matt and Stephanie Reichert  
 Chris and Marc Reinemann  
 Kerry Renner  
 Melissa Rivelo  
 Beva Robinson  
 Margaret Roll  
 Cristina Romero  
 Janie Rothschild  
 Cathie Royston  
 Marilana Rubatino  
 Carole and Mike Sampson  
 Mary Santosuosso  
 Jill Saunders  
 Kyle Schweitzer  
 Maureen and Paul Schwendener  
 Arthur Scully

Shelli and Robert Seely  
 David Self  
 Sarah Seppa  
 Jennifer Shandley  
 Suzy Shuster  
 Sheri Slater  
 Alison Smart  
 Smey Family  
 Barbara Spallino  
 Sarah and Lincoln Spoor  
 Ken Steinauer  
 Nicki Steinberg  
 Monique and Thomas Stern  
 Karen Stevens  
 Alan and Gayle Stevenson  
 Jenny Stireman  
 Bob and Betty Stone  
 Penny Storie  
 Misty and Jason Strait  
 The Stumph Family  
 Mari Swanson  
 Linda Hillman  
 Maribel Tamayo  
 Jazmyn Tapia  
 Brant Tennant  
 Carol and Joel Thea  
 Catherine and Eric Thomas  
 Laira Thomas, NP  
 Penny and Edward Thomas  
 Beverly B. Thompson  
 Diana Thompson  
 Earl and Nancy Thompson  
 Hazel Thorne  
 Jon Thorson  
 Rosalie Tornello  
 Hilary and Onur Torusoglu  
 Susan Tryon  
 Sally and Roger Turner  
 Charlotte Unger  
 Brian Vance  
 The Villas  
 Meg and William Vorm  
 Lynne Wade  
 Richard Walker  
 Cheri and Tom Watson  
 Amber Weber  
 Julie Weil  
 Libby and Robert Weil

Judy Whitmyre  
 Carolyn Wicklund  
 Mary and Charley Williams  
 Charles Wister  
 Etta Wood  
 Wood River Women's Foundation  
 Member's Fund in the Idaho  
 Community Foundation,  
 Kathleen Eder

## GIFTS OF \$1-\$99

Anonymous (31)  
 Lucy Abrahams  
 AmazonSmile  
 Piper Andrews  
 Sarah Armstrong  
 Jillene Arthur  
 Kelly Askew  
 Atkinson Family Foundation  
 Ursula Bannister  
 Nate Bechtel  
 Mary Beck  
 D'Layne Benson  
 Kathryn Beste  
 Kristin Bevers  
 Cat Black  
 Lisa Blackman  
 Veronica Bolliger  
 The Bollings  
 B. Boyer  
 Sean Brown  
 Allison Burns  
 Nello and Jenny Busdon  
 Bonnie and Robert Bush  
 Kathy Butler  
 Richard Carrothers  
 Irene Celis Del Castillo  
 Lorena Chavez  
 Gabe Cherian  
 Lisa Cincera  
 Amanda C.  
 Berenice Crowder  
 Meranda Culley  
 Sophie Curl  
 Angie and Tony DeRose  
 Christina Diaz  
 Saraluz Nava  
 Daryl Engelhardt  
 Sabrina Espinoza Mitma



Maria Fernanda Leal Martinez

Michelle Ferry

Erin Finnegan

Joan B. Firman

Jeanne Flowers

Bridget Foley

Jenny Freire

Margery Friedlander

Gia Gabriella

Martha Garcia Hinojo

Jonathan Gardner

Teresa Garen

Naeoming George

Taryn German

Rocio Gil

Tina Gonzalez

Gabby Gonzalez

Raquel Gonzalez

Nancy Grant

Kay Griffith

Alexi Hagen

Emily Hairston

Sara and Tom Hayward

Patricia Heath

Katie and Philip Hobson

Jon Holmquist

Sally Horn

Joe Inman

Page and Maureen Jenner

Layne and Anne Jensen

Megan Jones, RN

Chelsea Kandler

Scott Kelly

Shawna Kennison

Kimberly Kishimoto

Ralph Korach

Natalie Kueneman

Annie Leaday

Georgene Leap

Edward M. Lieskovan and  
Siwen Hu-Lieskovan

Betty Lira

Delia Lopez

Jenny Lopez

Abigail Mallory

Samantha Manning

Heidi Marcum

Jasmine Marquez

Lexi McClaghry

Brittany McFarland

Reyna Mejico-Castro

Mirian Melgar

Jenn Merrick

Abby Mills

Rodrigo Molina

Tiffany Montoya

Leslie Morfitt

Robert L. Morrison

Tina Niemiste

Kerry Nilsen

Emily O'Connor

Carol O'Loughlin

Ines Orihuela

Lupita Orozco

Melanie Paisley

Tana Parke

Gladys Paucar

Christine Peterson

Natalie Piteo

Kaylie Pomrenke

Haley Poston

Collett Pruitt

Jennifer Rablin

Angela M. Rayborn

Yuliana Regalado

Kelsey Rikken

Beverley Robertson

Rosa Robles

Lucy Sackbauer

Tamara Saleen

Belia Salinas

Joanna Sattler

Tera Schirf

Mike Schirmer

Ryan Schmidt

Jazzy Schofield

Susan and Anthony Scirica

Brigid Sears

Miriam Serrano

Cara Sheehan Johnston

Mark Shellabarger

Derek Shiells

Tawni Smith

## Supporting Nurse Education

In 2021, St. Luke's Wood River Foundation offered over \$57,000 in education grants to support future nurses of the College of Southern Idaho as well as special certifications and continued education for Wood River Valley nurses. In doing so, we supported the advancement of nurses within the Wood River community.

Lynn Wade, RN, with a nursing student.



Frances Solano  
 Hadly Steel  
 Laurie and Marc Steinberg  
 Elise and Jim Stelling  
 Kynli Stewart  
 Mariah Stout  
 David Sundholm  
 Wendy Teullet  
 Kjersten Timoney  
 Brenda Trudell  
 Osiel Valencia  
 Liz Vargas  
 Taylor Walsh  
 Terry Watters  
 Kelley Weston and Kiki Diepenbrock  
 Naomi White  
 Katie Whittier  
 Lynn Willis and Vic Pettric  
 The Wohlwend Family  
 Jess Wright  
 Marilyn Yaeger  
 Jill Zelaya

## **MATCHING GIFTS**

Shellie Abbott and Jim Bronson  
 Bessemer Trust, The Teagle Foundation  
 Incorporated, Janet and Walter Teagle

## **GIFTS IN KIND**

Barbara Boswell and Harold Robinson  
 Rickie Brady  
 Mari and David Clack  
 Betsy and Mark Gates  
 Hope Hayward  
 Anne and Tom Warde

## **PLANNED GIFTS**

Anonymous  
 Peggy and John Baker  
 Barbara Boswell  
 Myrle and Buzz Bradshaw\*  
 Susan and Frank Countner  
 DeBard Johnson Foundation,  
 Janet and Roger DeBard  
 Peggy and Sigi Engl\*  
 Dayle Fowler\*  
 Gay and Bill Fruehling  
 Hilary Furlong  
 Johni Hays  
 Carol Scheifele-Holmes and  
 Benjamin Holmes

Dr. Harry Huffaker  
 Judith A. Jellinek  
 The Johnson Family Fund of the Ayco  
 Charitable Foundation  
 Susie King  
 Ruth Lieder\*  
 David H. Lindow  
 Camille McCray\*  
 Wilson D. McElhinny  
 P. Scott McLean Jr., MD  
 Joan Donaldson, Robb Mickelson and  
 Bob Mickelson\*  
 Ruth and Roger Miller\*  
 James O. Moore, Jr.\*  
 Donald A. Morrison  
 Cynthia and Kingsley Murphy  
 Kim Nalen  
 Lynne and Bob Nicholson\*  
 Adrian and Bill\* Norris  
 Linda and John O'Connor  
 Susan Carter Orb  
 Margo Peck  
 Christine Peterson  
 Martha\* and Travis Reed  
 Beth Annable Riall  
 Mary Rolland  
 The Jaclyn and Sydney Rosenberg  
 Foundation, Nancy and Brad Rosenberg  
 Keith Sivertson, MD  
 Renee and Jim Strang  
 Charles Stuhlberg  
 Megan and Adam Tanous  
 Rolande and James\* Vaughn  
 Shay Doll and Buddy Wilton  
 Delores and William Winslow\*

## **GIFTS MADE IN MEMORY OF**

Lynne Bockemohle  
 by Sharon Bockemohle  
 Jim Coyle  
 by Kathleen and Hugh Blue  
 Judith Warde Davis  
 by Chrissy and Robert Davis  
 Edmund W. Dumke  
 by Michelle Dumke Praggastis and  
 Thomas Praggastis  
 Charles Ellwanger  
 by Shellie and Jim Bronson  
 by Brian Charneski  
 by Stacy and Jeff Deuel  
 by Heritage Bank  
 by Ursula and David Hinson  
 by Tony Pickering

by Brian Vance  
 by Carol Vannerson  
 Nancy Fitzpatrick  
 by Anonymous  
 Jerry Flynt  
 by Susan Flynt  
 Peter Gaasland  
 by Susan Gaasland  
 Dorris Gathrid  
 by Sidney and Don Weisberg  
 Cynnie Griffin  
 by Wayne Griffin  
 Peggy Hinman  
 by Harvey Hinman  
 Kathy Johnson  
 by Mary and George Broadbent  
 by Cathie and Hanley Dawson  
 Bob Truesdell Jones  
 by Delores Fery  
 Bob Lane  
 by Alice Lane  
 Bob Loomis  
 by Sara and Tom Hayward  
 Tom and Laurel McClain  
 by Phyllis Parvin  
 Lynne Nicholson  
 by Ursula Bannister  
 by Peggy Dean  
 by Georgene Leap  
 William E. Norris  
 by Adrian Norris  
 Gretchen Palmer  
 by Cookie and Michael Lafferty  
 Dr. Steven Platt  
 by Sharon and Richard Linville  
 Bud Purdy  
 by Susie and Rich Johnson  
 by Siwen Hu-Lieskovan and  
 Edward M. Lieskovan  
 Shirley Renick  
 by Donna Phebus  
 Ron Santosuosso  
 by Mary Santosuosso  
 Carol Shephard  
 by Anonymous (3)  
 by Becky Brown  
 by Angie and Tony DeRose  
 by Nancy Grant  
 by Susan Hughes  
 by Ralph Korach  
 by Barb Kruse  
 by Bernadette Lingenfelter  
 by Barbara and Robert Matthias  
 by Terry McNearney  
 by Carrie Mitchell  
 by Elizabeth Mullins  
 by Carol O'Loughlin  
 by Collett Pruitt  
 by Roberta Purrier  
 by Tedde and James Reid  
 by Margaret Roll



by Peggy and Paul Street  
by Susan Tryon  
Will Storey  
by Delores Fery  
by Judy and Herb Patriarche

Fischer Rose Watson  
by Suzy Shuster  
by Cheri and Tom Watson

Janice "Sis" Weidner  
by Mary and George Broadbent  
by Cathie and Hanley Dawson

Morton M. Woolley M.D.  
by Jane Woolley

## GIFTS MADE IN HONOR OF

Dr. Zachary Beatty  
by Ann and Dr. Mark Hansen

Nate Bechtel  
by Tracey Raymond

Dr. Tracy Busby  
by Leisa and Dr. Kenneth Brait

Danielle Crist Carruth  
by Mike Schirmer

Nancy and Charlie Cord  
by Karen and Bob Robideaux

Mary Ann Crowdsen  
by Gayle and Alan Stevenson

Dr. Ricardo Delgado  
by Rivian and Stuart Glickman

Emergency Department Staff  
by Anonymous  
by Kay and August Benz  
by Rosmarie Bogner  
by Joanne Davis  
by Jeanne and Jack Davisson  
by Diana Hoover Filkins  
by Mr. and Mrs. Robert B. Foster  
by Kaye and Gerry Kearns  
by Penny and Dennis Storie  
by Cheri and Tom Watson  
by Sarah and Bill Robertson

Dr. Dan Fairman  
by Anonymous (3)  
by Rosmarie Bogner  
by Inge and Hans Hub

by Martha and Ross Jennings  
by Jeanne and Rod Koleno  
by James Lindstrom  
by Murray McClain  
by Gwende and Jim McComas  
by Wilson D. McElhinny

Mary Kay Foley and Healing Touch Program  
by Margery and Bernard Friedlander

Ginny and Peter Foreman  
by Marguerite and Talton Embry

Betsy Gates  
by Sheree and John Shoch

Dr. Robert Hall  
by Susan and Arnold Blair  
by Katrina and Chris Cord

Dr. John Hatzenbuehler  
by Linda and Robert Vallee

Emily Karassik  
by Barbara Boyer

Dr. Matthew Kopplin  
by Mary and Michael Colhoun  
by Vivian and Brian Henderson

Elizabeth LaRocca  
by Shirley and Ralph Shapiro

Dr. Nancy Mann  
by Susan and Arnold Blair

Dr. Leigh Morse  
by Betty and Bob Stone

Betsy Mullins  
by Ginny and Peter Foreman  
by Debbie and Greg Hastings  
by Margaret and Bob Houston

Viki and Al Ranking  
by Mary Schelling

Dr. Matthew Reeck  
by Linda and Robert Vallee  
by Gwende and Jim McComas

Betsy and Bob Reniers  
by Mary Schelling

Dr. Deb Robertson  
by Pauline Adams  
by Amanda Black  
by Mr. and Mrs. Robert B. Foster  
by Rivian and Stuart Glickman

by Happy Hawn  
by Viki and Al Rankin  
by Sarah and Bill Robertson

Holly Roberts  
by Pauline Adams

Adrienne and Rob Robideaux  
by Karen and Bob Robideaux

Barb Spallino  
by Ann and Dr. Mark Hansen

Megan Tanous  
by David Self

Becky and Pete Smith  
by Alison and Stephen Frinsko  
by Karen and Bob Robideaux

St. Luke's Wood River Foundation  
by Johni Hays

Amber Weber  
by Cookie and Michael Lafferty

Susan Weil  
by Libby and Robert Weil

Lisa Wild  
by Maggie and David Sturdevant

Buddy Wilton  
by Anonymous  
by Amanda Black

Donna Wright  
by Cookie and Michael Lafferty

Wound Clinic  
by Missy and Tipp Cullen

Dr. Steven Writer  
by Susan and Arnold Blair  
by Carolyn Wicklund

Patience and Robert Ziebarth  
by Mary Schelling

*\*In memoriam*

*St. Luke's Wood River Foundation strives to provide accurate recognition of our donors. If you feel there has been an error or omission, please contact the Foundation office at 208-727-8447.*

## Legacy Giving

As you plan for your future, you make several important decisions. One of those carefully planned choices may be to create a lasting impact through a legacy gift. Legacy giving is a meaningful way to make a difference that will endure beyond your lifetime, impacting the lives of generations to come.

If your estate plans include a gift to St. Luke's Wood River Foundation, please let us know. We want to thank you for your generosity, honor your wishes and invite you to join our Legacy Society.



# Endowment Funds

Endowed funds provide current and long-term support for equipment, programs and services. Principals are invested in accordance with the Foundation's investment policy; earnings are spent in consultation with fund donors and at the discretion of the board of directors. We are grateful to the visionary individuals and foundations who have established endowed funds, which will provide financial security for the medical center well into the future.

## ENDOWED FUNDS OF \$1,000,000 OR MORE

### Emergency Services Endowment Fund

Emergency services are our community's highest health care priority. The hospital's emergency response network coordinates care from a patient's initial 911 call through arrival at the hospital. Board-certified emergency physicians and highly trained nurses provide the best possible care for patients suffering from heart attacks, strokes or serious injuries.

### Pediatric Services Endowment Fund

In 2018, for the first time in over a decade, the hospital welcomed a full-time pediatrician to the valley. Generous community members established this fund to ensure the long-term sustainability of pediatric services.

## ENDOWED FUNDS OF \$500,000 OR MORE

### Engl Family Endowment Fund

Created in 1973 by the Peggy Emery Engl Descendants' Trust, this was the Foundation's first endowed fund. Annual distributions, made in consultation with members of the Engl Family, support the hospital's priority needs.

### P. Scott McLean, Jr., MD, Endowment Fund for Staff Education

This fund, created by the Boswell Family Foundation in 2005, ensures staff can access training to further their expertise in best practices for patient care. Dr. P. Scott McLean, Jr., advises on the fund.

## ENDOWED FUNDS OF \$100,000 OR MORE

### The Carol and Pat McLaughlin, MD, Endowment Fund for St. Luke's Wood River Employee Medical Expenses

Shay Doll and Buddy Wilton created this fund in 2009 to help hospital employees and their families with co-payments for medical expenses.

### Carol Shephard Nursing Scholarship Fund

Carol Shephard established this endowment to fund the educations of aspiring nurses, particularly those who intend to work at St. Luke's Wood River. It supports new nurses' educational goals and high-quality care.

### The Deer Creek Fund

This fund, established and advised by Lynn Campion-Waddell, Tom Campion, Ashley Campion and Berit Campion, provides ongoing support for the hospital's priority needs, especially emergency medical services.

### Physician Innovation Endowment

This fund gives patients a way to say thank you as well as supports physicians' investments in patient care. The hospital's physicians, through the medical executive committee, decide how to utilize the fund.

### Recognition Endowment Fund

This fund was established to express gratitude for health care workers. It has funded recognition events to honor our employees and is a valuable tool in efforts to retain clinical staff.

## ENDOWED FUNDS OF \$25,000 OR MORE

### Carl A. Gray Memorial Award Fund

Established in 1991 by Harvey Gray, Carl Gray's son, this fund honors the memory of an avid Sun Valley Ski Club member while celebrating excellence in nursing care.

### Women's Imaging Center Endowment

This fund was established to support the state-of-the-art Women's Imaging Center, which was fully funded by generous community philanthropy in 2009.



## Mission:

To inspire generosity that improves health and well-being in the community.

## Vision:

We envision a community where generosity ensures clinical excellence and empowers health for all.

Your generosity impacts lives.  
Makes a difference. Heals.



PO Box 7005  
Ketchum, Idaho 83340  
[wrfriends@slhs.org](mailto:wrfriends@slhs.org)  
[slwrf.org](http://slwrf.org)